



**Forecast Advisory Committee**  
**1299 North Orchard, Suite 110**  
**Boise, Idaho 83706**

**Executive Summary – IDOC Forecast Variance for December 2011**

This report will review the FY 2012 forecast performance through November, and includes 3 attachments:

- Attachment 1 comprises two graphs showing forecast, adjusted forecast, and actual population values for both incarcerated and supervised offenders.
- Attachment 2 comprises two graphs showing the current forecast variance sources by offender status and gender.
- Attachment 3 comprises three sets of tables (for all offenders, for males, and for females) showing details of actual and forecast admissions and releases for incarcerated offenders in Term, Rider and Parole Violator status and supervised offenders in Probation and Parole status.

**December 2011 EOM Variance**

	Beg. FY 12	Ending Population		Monthly Change	Ending Forecast	Cum. Variance
		Nov-11	Dec-11			
<b>Total Incarcerated</b>	<b>7,578</b>	<b>7,638</b>	<b>7,739</b>	<b>101</b>	<b>7,504</b>	<b>235</b>
Term	6,038	6,130	6,164	34	6,160	4
Rider	1,051	1,059	1,104	45	966	138
Parole Violator	489	449	471	22	378	93
<b>Total Supervised</b>	<b>14,033</b>	<b>13,997</b>	<b>14,116</b>	<b>119</b>	<b>14,317</b>	<b>-201</b>
Probation	11,079	11,023	11,072	49	11,234	-162
Parole	2,954	2,974	3,044	70	3,083	-39

**Observations**

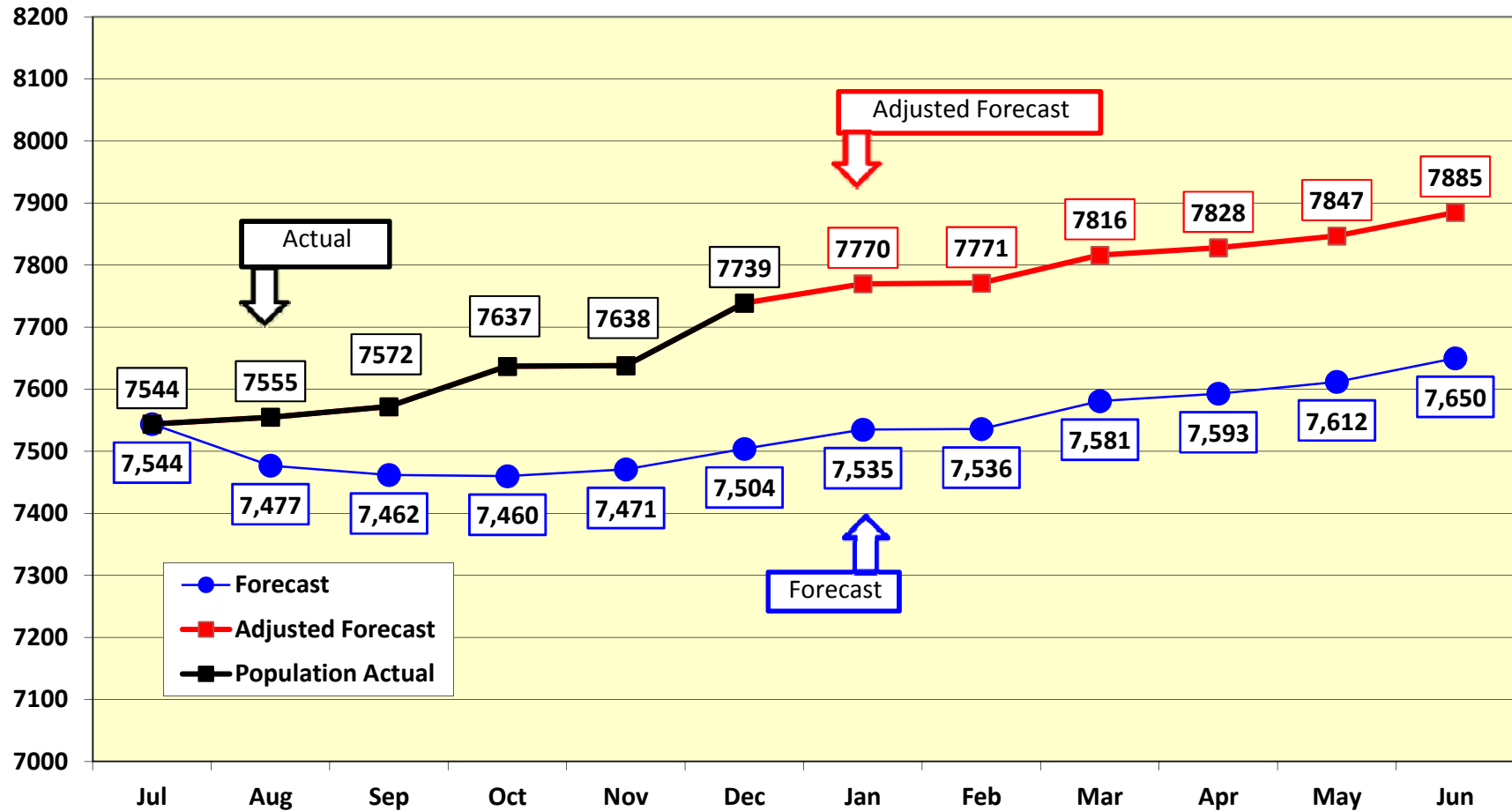
The variance in the incarcerated population due to Parole Violators remains high, as does that due to Riders. While the PV admissions are in line with forecast, the PV-to-Term moves are well below forecast, which is consistent with the longer length-of-stay on PV status that has been noted. Rider variance increased once again due to a relatively large number of admissions from Probation and a continued less-than-forecast number of releases to Probation. This is largely due to a longer length-of-stay, rather than a significant increase in the percentage of Riders being sent to Term incarceration. The variance in supervised population stems from several areas: there are fewer commitments to Probation than expected, as well as fewer releases from Term to Parole.

If you have any questions regarding the attached materials, please feel free to give me a call at 658-2148 or contact me via email.

Tony Grange  
 Idaho Dept of Correction  
 Research and Analysis  
 208.658.2148, [agrange@idoc.idaho.gov](mailto:agrange@idoc.idaho.gov)

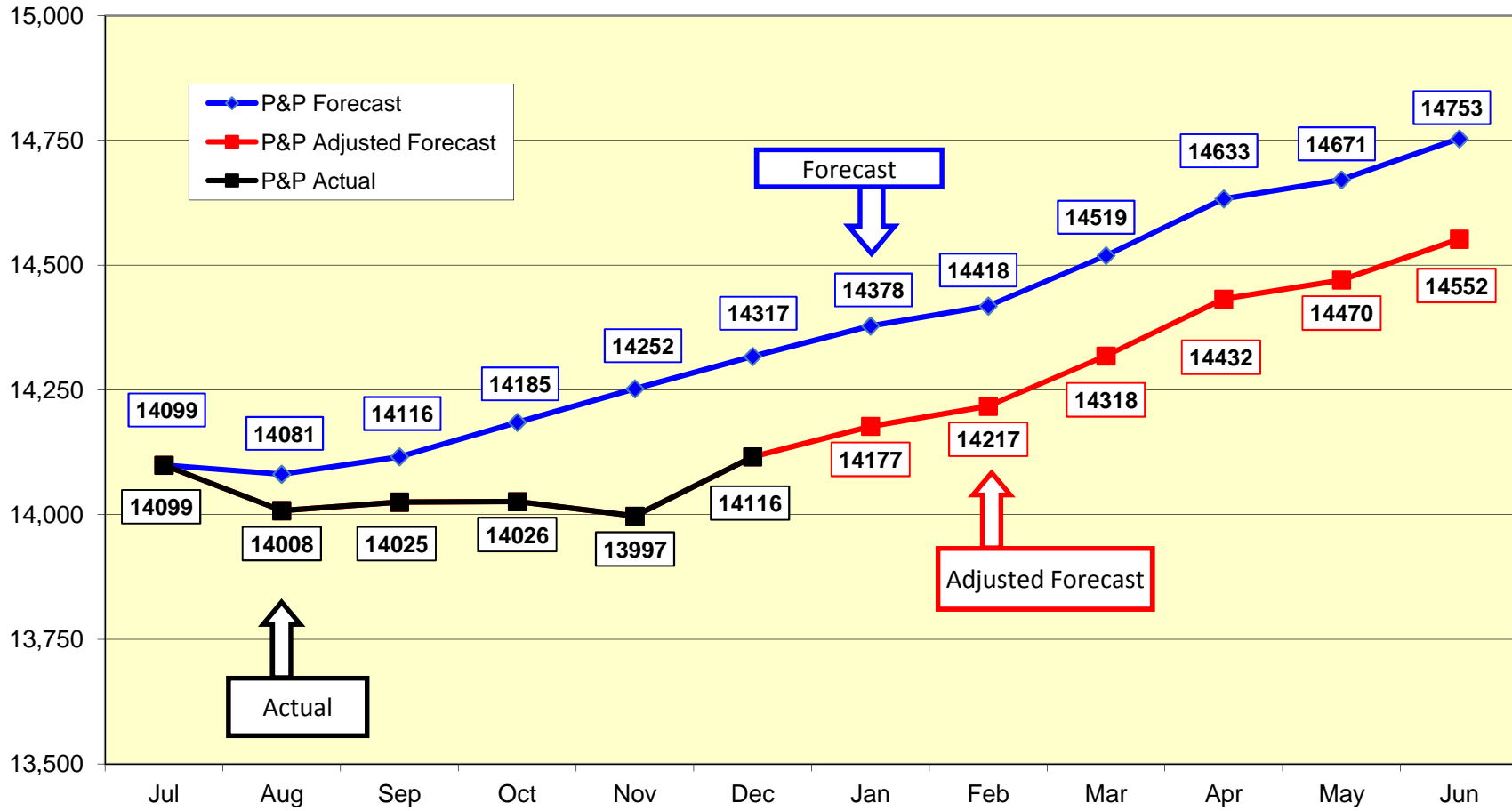
Note: All forecast values for July have been modified to reflect actual values in order to give an unambiguous start point for the forecast. Year-to-date variances for net admissions and releases and ending values are highlighted in blue in Attachment 3. Ending count variances are circled in red.

### Idaho Department of Correction Forecast vs Actual Incarcerated Offender Population for FY2012



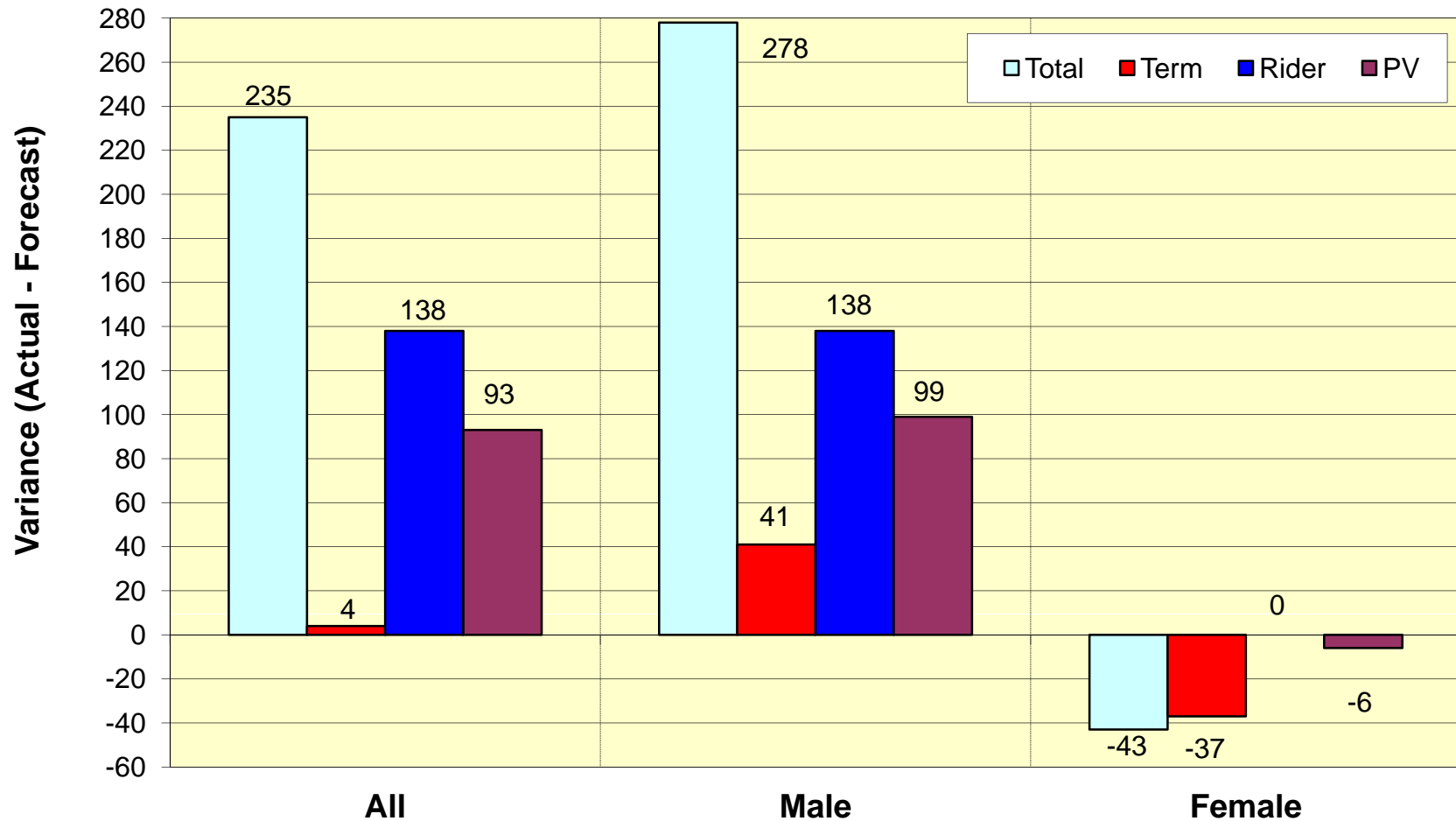
Notes: 1) Forecast Population is based on the FY 2012 Flow Model Forecast. 2) Adjusted Forecast equals the current count plus forecast admissions and releases for each subsequent month. 3) Actual Total Population includes offenders in Idaho institutions, contract facilities, or county jails. The count does not include offenders that we track but do not house nor pay for housing.

### Idaho Department of Correction Forecast vs Actual Supervised Offender Population for FY2012

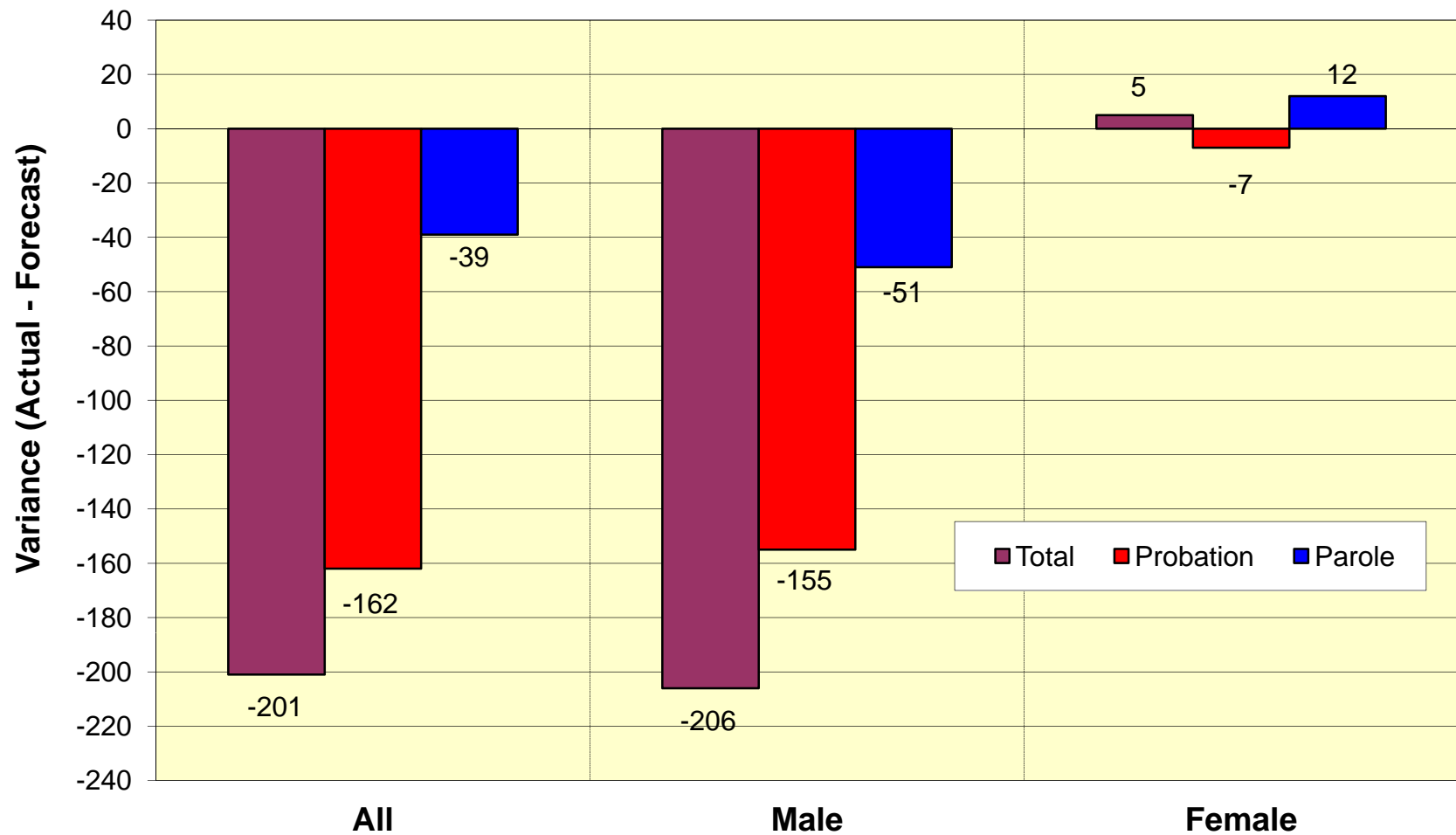


Notes: 1) Forecast Community Corrections Population is based on the FY 2012 Flow Model Forecast. 2) Adjusted Forecast equals the current count plus forecast admissions and releases for each subsequent month.

## Forecast Variance - Incarcerated by Status and Gender - December 2011



## Forecast Variance - Supervised by Status and Gender - December 2011



Flow Model Forecast  
FY 2012 (All Offenders)

Term	Actual Population and YTD Forecast Population												YTD Act	YTD Fore	YTD O/(U)	
	Jul Act	Aug Act	Sep Act	Oct Act	Nov Act	Dec Act	Jan Act	Feb Act	Mar Act	Apr Act	May Act	Jun Act				
<b>Admissions</b>																
New Commitments	35	57	42	56	40	61								291	307	-16
Failed Riders	19	34	15	23	29	26								146	125	21
Revoked Probation	49	63	40	63	49	77								341	270	71
Revoked Parole	72	55	13	65	67	18								290	364	-74
<b>Total Admissions</b>	<b>175</b>	<b>209</b>	<b>110</b>	<b>207</b>	<b>185</b>	<b>182</b>								<b>1,068</b>	<b>1,066</b>	<b>2</b>
<b>Releases</b>																
Paroled	105	120	99	95	105	118								642	688	-46
Discharged	46	52	44	52	56	39								289	258	31
<b>Total Releases</b>	<b>151</b>	<b>172</b>	<b>143</b>	<b>147</b>	<b>161</b>	<b>157</b>								<b>931</b>	<b>946</b>	<b>-15</b>
<b>Net Admissions/Releases</b>	<b>24</b>	<b>37</b>	<b>-33</b>	<b>60</b>	<b>24</b>	<b>25</b>								<b>137</b>	<b>120</b>	<b>17</b>
<b>Beginning</b>	<b>6,199</b>	<b>6,223</b>	<b>6,260</b>	<b>6,227</b>	<b>6,287</b>	<b>6,311</b>										
Net Admissions/Releases	24	37	-33	60	24	25								137	120	17
<b>Ending</b>	<b>6,223</b>	<b>6,260</b>	<b>6,227</b>	<b>6,287</b>	<b>6,311</b>	<b>6,336</b>								<b>6,336</b>	<b>6,319</b>	<b>17</b>
Non Bed	163	169	159	167	181	172								172	159	13
<b>Net Term</b>	<b>6,060</b>	<b>6,091</b>	<b>6,068</b>	<b>6,120</b>	<b>6,130</b>	<b>6,164</b>								<b>6,164</b>	<b>6,160</b>	<b>4</b>
<b>Rider</b>																
<b>Admissions</b>																
New Commitments	72	85	82	88	84	93								504	535	-31
Failed Probation	76	109	82	127	113	111								618	537	81
<b>Total</b>	<b>148</b>	<b>194</b>	<b>164</b>	<b>215</b>	<b>197</b>	<b>204</b>								<b>1,122</b>	<b>1,072</b>	<b>50</b>
<b>Releases</b>																
Term	19	34	15	23	29	26								146	125	21
Probation	141	184	140	130	156	162								913	997	-84
<b>Total</b>	<b>160</b>	<b>218</b>	<b>155</b>	<b>153</b>	<b>185</b>	<b>188</b>								<b>1,059</b>	<b>1,122</b>	<b>-63</b>
<b>Net Admissions/Releases</b>	<b>-12</b>	<b>-24</b>	<b>9</b>	<b>62</b>	<b>12</b>	<b>16</b>								<b>63</b>	<b>-50</b>	<b>113</b>
<b>Beginning</b>	<b>1,173</b>	<b>1,161</b>	<b>1,137</b>	<b>1,146</b>	<b>1,208</b>	<b>1,220</b>										
Net Admissions/Releases	-12	-24	9	62	12	16								63	-50	113
<b>Ending</b>	<b>1,161</b>	<b>1,137</b>	<b>1,146</b>	<b>1,208</b>	<b>1,220</b>	<b>1,236</b>								<b>1,236</b>	<b>1,123</b>	<b>113</b>
Non Bed	130	151	140	164	161	132								132	157	-25
<b>Net Rider</b>	<b>1,031</b>	<b>986</b>	<b>1,006</b>	<b>1,044</b>	<b>1,059</b>	<b>1,104</b>								<b>1,104</b>	<b>966</b>	<b>138</b>

Flow Model Forecast  
FY 2012 (All Offenders)

	Actual Population and YTD Forecast Population							YTD	YTD	YTD					
	Jul	Aug	Sep	Oct	Nov	Dec	Jan	Feb	Mar	Apr	May	Jun	Act	Fore	O/(U)
<b>Parole Violator</b>															
Admissions															
Parole	81	102	86	75	74	64							482	497	-15
Releases															
Term	71	54	12	65	67	18							287	363	-76
Reinstated Parole	48	35	44	45	25	22							219	205	14
Discharged	3	1	0	4	2	2							12.00	18.00	-6
Total	122	90	56	114	94	42							518	586	-68
Net Admissions/Releases	-41	12	30	-39	-20	22							-36	-89	53
Beginning	690	649	661	691	652	632									
Net Admissions/Releases	-41	12	30	-39	-20	22							-36	-89	53
Ending	649	661	691	652	632	654							654	601	53
Non Bed	196	183	193	179	183	183							183	223	-40
Total Incarcerated	453	478	498	473	449	471							471	378	93
Net Incarcerations	7,544	7,555	7,572	7,637	7,638	7,739							7,739	7,504	235
<b>Probation</b>															
Admissions															
New Commitments	177	254	186	178	219	251							1,265	1,348	-83
Successful Rider	140	174	134	148	142	159							897	996	-99
Total	317	428	320	326	361	410							2,162	2,344	-182
Releases															
Sent to Rider	76	109	81	127	113	111							617	537	80
Revoked Probation	49	63	40	63	49	77							341	270	71
Discharged	188	200	227	174	211	166							1,166	1,288	-122
Total	313	372	348	364	373	354							2,124	2,095	29
Net Admissions/Releases	4	56	-28	-38	-12	56							38	249	-211
Beginning	13,770	13,774	13,830	13,802	13,764	13,752									
Net Admissions/Releases	4	56	-28	-38	-12	56							38	249	-211
Ending	13,774	13,830	13,802	13,764	13,752	13,808							13,808	14,019	-211
Non Caseload	2,687	2,742	2,731	2,725	2,729	2,736							2,736	2,785	-49
Net Probation Caseload	11,087	11,088	11,071	11,039	11,023	11,072							11,072	11,234	-162

Flow Model Forecast  
FY 2012 (All Offenders)

	Actual Population and YTD Forecast Population							YTD	YTD	YTD					
	Jul	Aug	Sep	Oct	Nov	Dec	Jan	Feb	Mar	Apr	May	Jun	Act	Fore	O/(U)
<b>Parole</b>															
Beginning															
Admissions															
Paroled	104	120	99	95	105	118							641	687	-46
Re-instated Violator	53	40	50	49	37	31							260	210	50
Total	157	160	149	144	142	149							901	897	4
Releases															
Parole Violator	81	102	86	76	74	63							482	497	-15
Discharged	9	168	7	8	80	7							279	245	34
Total	90	270	93	84	154	70							761	742	19
Net Admissions/Releases	67	-110	56	60	-12	79							140	155	-15
Beginning	3,907	3,974	3,864	3,920	3,980	3,968									
Net Admissions/Releases	67	-110	56	60	-12	79							140	155	-15
Ending	3,974	3,864	3,920	3,980	3,968	4,047							4,047	4,062	-15
Non Caseload	962	944	966	993	994	1,003							1,003	979	24
Net Parole Caseload	3,012	2,920	2,954	2,987	2,974	3,044							3,044	3,083	-39
Net CC Caseload	14,099	14,008	14,025	14,026	13,997	14,116							14,116	14,317	-201
Net Bed and Caseload	21,643	21,563	21,597	21,663	21,635	21,855							21,855	21,821	34

Flow Model Forecast  
FY 2012 (All Offenders)

Monthly Population Forecast

Term	Jul	Aug	Sep	Oct	Nov	Dec	Jan	Feb	Mar	Apr	May	Jun
	Forecast	Forecast	Forecast	Forecast	Forecast	Forecast	Forecast	Forecast	Forecast	Forecast	Forecast	Forecast
<b>Admissions</b>												
New Commitments	35	51	51	57	55	58	55	51	62	57	54	60
Failed Riders	19	21	22	22	21	20	19	20	20	21	21	21
Revoked Probation	49	44	44	44	45	44	47	47	47	48	47	48
Revoked Parole	72	62	60	57	57	56	54	55	54	53	50	49
<b>Total Admissions</b>	<b>175</b>	<b>178</b>	<b>177</b>	<b>180</b>	<b>178</b>	<b>178</b>	<b>175</b>	<b>173</b>	<b>183</b>	<b>179</b>	<b>172</b>	<b>178</b>
<b>Releases</b>												
Paroled	105	116	109	121	121	116	112	123	122	122	118	121
Discharged	46	43	40	42	44	43	45	47	47	44	43	41
<b>Total Releases</b>	<b>151</b>	<b>159</b>	<b>149</b>	<b>163</b>	<b>165</b>	<b>159</b>	<b>157</b>	<b>170</b>	<b>169</b>	<b>166</b>	<b>161</b>	<b>162</b>
<b>Net Admissions/Releases</b>	<b>24</b>	<b>19</b>	<b>28</b>	<b>17</b>	<b>13</b>	<b>19</b>	<b>18</b>	<b>3</b>	<b>14</b>	<b>13</b>	<b>11</b>	<b>16</b>
<b>Beginning</b>												
Net Admissions/Rel	24	19	28	17	13	19	18	3	14	13	11	16
<b>Ending</b>	<b>6,223</b>	<b>6,242</b>	<b>6,270</b>	<b>6,287</b>	<b>6,300</b>	<b>6,319</b>	<b>6,337</b>	<b>6,340</b>	<b>6,354</b>	<b>6,367</b>	<b>6,378</b>	<b>6,394</b>
Non Bed	163	165	169	174	163	159	161	159	159	162	161	162
<b>Net Term</b>	<b>6,060</b>	<b>6,077</b>	<b>6,101</b>	<b>6,113</b>	<b>6,137</b>	<b>6,160</b>	<b>6,176</b>	<b>6,181</b>	<b>6,195</b>	<b>6,205</b>	<b>6,217</b>	<b>6,232</b>
<b>Rider</b>												
<b>Admissions</b>												
New Commitments	72	89	89	97	88	100	100	87	107	102	98	105
Failed Probation	76	93	91	92	91	94	92	97	97	98	99	97
<b>Total</b>	<b>148</b>	<b>182</b>	<b>180</b>	<b>189</b>	<b>179</b>	<b>194</b>	<b>192</b>	<b>184</b>	<b>204</b>	<b>200</b>	<b>197</b>	<b>202</b>
<b>Releases</b>												
Term	19	21	22	22	21	20	19	20	20	21	21	21
Probation	141	170	179	180	169	158	151	163	163	167	168	169
<b>Total</b>	<b>160</b>	<b>191</b>	<b>201</b>	<b>202</b>	<b>190</b>	<b>178</b>	<b>170</b>	<b>183</b>	<b>183</b>	<b>188</b>	<b>189</b>	<b>190</b>
<b>Net Admission &amp; Releases</b>	<b>-12</b>	<b>-9</b>	<b>-21</b>	<b>-13</b>	<b>-11</b>	<b>16</b>	<b>22</b>	<b>1</b>	<b>21</b>	<b>12</b>	<b>8</b>	<b>12</b>
<b>Beginning</b>												
Net Admissions/Rel	-12	-9	-21	-13	-11	16	22	1	21	12	8	12
<b>Ending</b>	<b>1,161</b>	<b>1,152</b>	<b>1,131</b>	<b>1,118</b>	<b>1,107</b>	<b>1,123</b>	<b>1,145</b>	<b>1,146</b>	<b>1,167</b>	<b>1,179</b>	<b>1,187</b>	<b>1,199</b>
Non Bed	130	166	163	155	155	157	162	160	155	157	162	157
<b>Net Rider</b>	<b>1,031</b>	<b>986</b>	<b>968</b>	<b>963</b>	<b>952</b>	<b>966</b>	<b>983</b>	<b>986</b>	<b>1,012</b>	<b>1,022</b>	<b>1,025</b>	<b>1,042</b>

Flow Model Forecast  
FY 2012 (All Offenders)

Monthly Population Forecast

	Jul	Aug	Sep	Oct	Nov	Dec	Jan	Feb	Mar	Apr	May	Jul
<b>Parole Violator</b>												
Admissions												
Parole	81	83	88	86	80	79	75	74	82	87	87	76
Releases												
Term	71	62	60	57	57	56	54	55	54	53	50	49
Reinstated Parole	48	33	32	31	31	30	29	30	29	28	27	26
Discharged	3	3	3	3	3	3	3	3	3	3	3	3
Total	122	98	95	91	91	89	86	88	86	84	80	78
Net Admission & Releases	-41	-15	-7	-5	-11	-10	-11	-14	-4	3	7	-2
Beginning	690	649	634	627	622	611	601	590	576	572	575	582
Net Admissions/Rel	-41	-15	-7	-5	-11	-10	-11	-14	-4	3	7	-2
Ending	649	634	627	622	611	601	590	576	572	575	582	580
Non Bed	196	220	234	238	229	223	214	207	198	209	212	204
Net Parole Violator	453	414	393	384	382	378	376	369	374	366	370	376
<b>Net Incarcerations</b>												
	7,544	7,477	7,462	7,460	7,471	7,504	7,535	7,536	7,581	7,593	7,612	7,650
<b>Probation</b>												
Admissions												
New Commitments	177	218	228	251	224	250	248	214	266	257	239	260
Successful Rider	140	170	179	180	169	158	151	163	163	167	168	169
Total	317	388	407	431	393	408	399	377	429	424	407	429
Releases												
To Rider	76	93	91	92	91	94	92	97	97	98	99	97
Revoked Probation	49	44	44	44	45	44	47	47	47	48	47	48
Discharged	188	221	230	219	213	217	209	204	209	202	211	223
Total	313	358	365	355	349	355	348	348	353	348	357	368
Net Admission & Releases	4	30	42	76	44	53	51	29	76	76	50	61
Beginning	13,770	13,774	13,804	13,846	13,922	13,966	14,019	14,070	14,099	14,175	14,251	14,301
Net Admissions/Rel	4	30	42	76	44	53	51	29	76	76	50	61
Ending	13,774	13,804	13,846	13,922	13,966	14,019	14,070	14,099	14,175	14,251	14,301	14,362
Non Caseload	2,687	2,766	2,775	2,793	2,789	2,785	2,800	2,807	2,811	2,799	2,819	2,813
Net Probation Caseload	11,087	11,038	11,071	11,129	11,177	11,234	11,270	11,292	11,364	11,452	11,482	11,549

Flow Model Forecast  
FY 2012 (All Offenders)

Monthly Population Forecast

	Jul	Aug	Sep	Oct	Nov	Dec	Jan	Feb	Mar	Apr	May	Jun
<b>Parole</b>												
Admissions												
Paroled	104	116	109	121	121	116	112	123	122	122	118	121
Re-instated Violator	53	33	32	31	31	30	29	30	29	28	27	26
<b>Total</b>	<b>157</b>	<b>149</b>	<b>141</b>	<b>152</b>	<b>152</b>	<b>146</b>	<b>141</b>	<b>153</b>	<b>151</b>	<b>150</b>	<b>145</b>	<b>147</b>
Releases												
Parole Violator	81	83	88	86	80	79	75	74	82	87	87	76
Discharged	9	48	50	51	45	42	42	40	41	43	45	45
<b>Total</b>	<b>90</b>	<b>131</b>	<b>138</b>	<b>137</b>	<b>125</b>	<b>121</b>	<b>117</b>	<b>114</b>	<b>123</b>	<b>130</b>	<b>132</b>	<b>121</b>
Net Admission & Releases	67	18	3	15	27	25	24	39	28	20	13	26
Beginning	3,907	3,974	3,992	3,995	4,010	4,037	4,062	4,086	4,125	4,153	4,173	4,186
Net Admissions/Rel	67	18	3	15	27	25	24	39	28	20	13	26
Ending	3,974	3,992	3,995	4,010	4,037	4,062	4,086	4,125	4,153	4,173	4,186	4,212
Non Caseload	962	949	950	954	962	979	978	999	998	992	997	1,008
Net Parole Caseload	3,012	3,043	3,045	3,056	3,075	3,083	3,108	3,126	3,155	3,181	3,189	3,204
<b>Net CC Caseload</b>	<b>14,099</b>	<b>14,081</b>	<b>14,116</b>	<b>14,185</b>	<b>14,252</b>	<b>14,317</b>	<b>14,378</b>	<b>14,418</b>	<b>14,519</b>	<b>14,633</b>	<b>14,671</b>	<b>14,753</b>
<b>Net Bed and Caseload</b>	<b>21,643</b>	<b>21,558</b>	<b>21,578</b>	<b>21,645</b>	<b>21,723</b>	<b>21,821</b>	<b>21,913</b>	<b>21,954</b>	<b>22,100</b>	<b>22,226</b>	<b>22,283</b>	<b>22,403</b>
<b>Forecast Monthly Average Bed Demand</b>	6,928	7,511	7,470	7,461	7,466	7,488	7,520	7,536	7,559	7,587	7,603	7,631
<b>Forecast Monthly Average Case Demand</b>	12,027	14,090	14,099	14,151	14,219	14,285	14,348	14,398	14,469	14,576	14,652	14,712

Flow Model Forecast  
FY 2012 (Males)

Term	Actual Population and YTD Forecast Population												YTD Act	YTD Fore	YTD O/(U)	
	Jul Act	Aug Act	Sep Act	Oct Act	Nov Act	Dec Act	Jan Act	Feb Act	Mar Act	Apr Act	May Act	Jun Act				
<b>Admissions</b>																
New Commitments	30	53	40	53	37	57								270	277	-7
Failed Riders	16	26	13	16	27	22								120	100	20
Revoked Probation	42	52	33	56	41	67								291	209	82
Revoked Parole	69	44	11	64	48	16								252	320	-68
<b>Total Admissions</b>	<b>157</b>	<b>175</b>	<b>97</b>	<b>189</b>	<b>153</b>	<b>162</b>								<b>933</b>	<b>906</b>	<b>27</b>
<b>Releases</b>																
Paroled	97	111	87	82	92	96								565	623	-58
Discharged	42	48	40	44	43	36								253	226	27
<b>Total Releases</b>	<b>139</b>	<b>159</b>	<b>127</b>	<b>126</b>	<b>135</b>	<b>132</b>								<b>818</b>	<b>849</b>	<b>-31</b>
<b>Net Admissions/Releases</b>	<b>18</b>	<b>16</b>	<b>-30</b>	<b>63</b>	<b>18</b>	<b>30</b>								<b>115</b>	<b>57</b>	<b>58</b>
<b>Beginning</b>																
Net Admissions/Releases	18	16	-30	63	18	30								115	57	58
<b>Ending</b>																
Non Bed	151	149	141	152	168	160								160	143	17
<b>Net Term</b>	<b>5,475</b>	<b>5,493</b>	<b>5,471</b>	<b>5,523</b>	<b>5,525</b>	<b>5,563</b>								<b>5,563</b>	<b>5,522</b>	<b>41</b>
<b>Rider</b>																
<b>Admissions</b>																
New Commitments	65	71	63	66	70	79								414	439	-25
Failed Probation	54	80	63	100	80	88								465	403	62
<b>Total</b>	<b>119</b>	<b>151</b>	<b>126</b>	<b>166</b>	<b>150</b>	<b>167</b>								<b>879</b>	<b>842</b>	<b>37</b>
<b>Releases</b>																
Term	16	26	13	16	27	22								120	100	20
Probation	107	161	111	90	108	118								695	790	-95
<b>Total</b>	<b>123</b>	<b>187</b>	<b>124</b>	<b>106</b>	<b>135</b>	<b>140</b>								<b>815</b>	<b>890</b>	<b>-75</b>
<b>Net Admissions/Releases</b>	<b>-4</b>	<b>-36</b>	<b>2</b>	<b>60</b>	<b>15</b>	<b>27</b>								<b>64</b>	<b>-48</b>	<b>112</b>
<b>Beginning</b>																
Net Admissions/Releases	-4	-36	2	60	15	27								64	-48	112
<b>Ending</b>																
Non Bed	101	125	107	116	117	96								96	122	-26
<b>Net Rider</b>	<b>781</b>	<b>721</b>	<b>741</b>	<b>792</b>	<b>806</b>	<b>854</b>								<b>854</b>	<b>716</b>	<b>138</b>

Flow Model Forecast  
FY 2012 (Males)

	Actual Population and YTD Forecast Population												YTD	YTD	YTD	
	Jul	Aug	Sep	Oct	Nov	Dec	Jan	Feb	Mar	Apr	May	Jun	Act	Fore	O/(U)	
<b>Parole Violator</b>																
Admissions																
Parole	68	92	75	70	67	56							428	431	-3	
Releases																
Term	68	43	10	64	48	16							249	319	-70	
Reinstated Parole	39	32	33	41	21	19							185	175	10	
Discharged	0	0	0	3	1	2							6	10	-4	
Total	107	75	43	108	70	37							440	504	-64	
Net Admissions/Releases	-39	17	32	-38	-3	19							-12	-73	61	
Beginning	606	567	584	616	578	575										
Net Admissions/Releases	-39	17	32	-38	-3	19							-12	-73	61	
Ending	567	584	616	578	575	594							594	533	61	
Non Bed	172	162	172	159	158	157							157	195	-38	
Total Incarcerated	395	422	444	419	417	437							437	338	99	
Net Incarcerations	6,651	6,636	6,656	6,734	6,748	6,854							6,854	6,576	278	
<b>Probation</b>																
Admissions																
New Commitments	128	183	136	124	154	182							907	983	-76	
Successful Rider	106	151	106	107	94	115							679	789	-110	
Total	234	334	242	231	248	297							1,586	1,772	-186	
Releases																
Sent to Rider	54	80	62	100	80	88							464	403	61	
Revoked Probation	42	52	33	56	41	67							291	209	82	
Discharged	143	137	167	124	157	115							843	974	-131	
Total	239	269	262	280	278	270							1,598	1,586	12	
Net Admissions/Releases	-5	65	-20	-49	-30	27							-12	186	-198	
Beginning	10,339	10,334	10,399	10,379	10,330	10,300										
Net Admissions/Releases	-5	65	-20	-49	-30	27							-12	186	-198	
Ending	10,334	10,399	10,379	10,330	10,300	10,327							10,327	10,525	-198	
Non Caseload	2,139	2,174	2,158	2,157	2,160	2,162							2,162	2,205	-43	
Net Probation Caseload	8,195	8,225	8,221	8,173	8,140	8,165							8,165	8,320	-155	

Flow Model Forecast  
FY 2012 (Males)

	Actual Population and YTD Forecast Population						YTD	YTD	YTD						
	Jul	Aug	Sep	Oct	Nov	Dec	Jan	Feb	Mar	Apr	May	Jun	Act	Fore	O/(U)
<b>Parole</b>															
Beginning															
Admissions															
Paroled	96	111	87	82	92	96							564	622	-58
Re-instated Violator	42	37	39	43	31	28							220	178	42
Total	138	148	126	125	123	124							784	800	-16
Releases															
Parole Violator	71	92	75	71	67	55							431	434	-3
Discharged	8	137	5	8	68	7							233	210	23
Total	79	229	80	79	135	62							664	644	20
Net Admissions/Releases	59	-81	46	46	-12	62							120	156	-36
Beginning															
Net Admissions/Releases	3,389	3,448	3,367	3,413	3,459	3,447							120	156	-36
Ending															
Non Caseload	3,448	3,367	3,413	3,459	3,447	3,509							3,509	3,545	-36
Net Parole Caseload	878	867	886	910	908	913							913	898	15
Net Parole Caseload	2,570	2,500	2,527	2,549	2,539	2,596							2,596	2,647	-51
Net CC Caseload															
Net CC Caseload	10,765	10,725	10,748	10,722	10,679	10,761							10,761	10,967	-206
Net Bed and Caseload															
Net Bed and Caseload	17,416	17,361	17,404	17,456	17,427	17,615							17,615	17,543	72

Flow Model Forecast  
FY 2012 (Males)

Monthly Population Forecast

Term	Jul	Aug	Sep	Oct	Nov	Dec	Jan	Feb	Mar	Apr	May	Jun
	Forecast	Forecast	Forecast	Forecast	Forecast	Forecast	Forecast	Forecast	Forecast	Forecast	Forecast	Forecast
<b>Admissions</b>												
New Commitments	30	46	46	52	52	51	52	46	55	53	50	55
Failed Riders	16	16	17	18	17	16	15	16	16	17	17	16
Revoked Probation	42	33	33	34	34	33	36	36	35	36	35	36
Revoked Parole	69	52	51	49	49	50	47	48	47	46	43	43
<b>Total Admissions</b>	<b>157</b>	<b>147</b>	<b>147</b>	<b>153</b>	<b>152</b>	<b>150</b>	<b>150</b>	<b>146</b>	<b>153</b>	<b>152</b>	<b>145</b>	<b>150</b>
<b>Releases</b>												
Paroled	97	102	96	112	111	105	101	110	108	109	102	105
Discharged	42	38	35	36	38	37	38	41	41	38	38	36
<b>Total Releases</b>	<b>139</b>	<b>140</b>	<b>131</b>	<b>148</b>	<b>149</b>	<b>142</b>	<b>139</b>	<b>151</b>	<b>149</b>	<b>147</b>	<b>140</b>	<b>141</b>
<b>Net Admissions/Releases</b>	<b>18</b>	<b>7</b>	<b>16</b>	<b>5</b>	<b>3</b>	<b>8</b>	<b>11</b>	<b>-5</b>	<b>4</b>	<b>5</b>	<b>5</b>	<b>9</b>
<b>Beginning</b>	<b>5,608</b>	<b>5,626</b>	<b>5,633</b>	<b>5,649</b>	<b>5,654</b>	<b>5,657</b>	<b>5,665</b>	<b>5,676</b>	<b>5,671</b>	<b>5,675</b>	<b>5,680</b>	<b>5,685</b>
Net Admissions/Rel	18	7	16	5	3	8	11	-5	4	5	5	9
<b>Ending</b>	<b>5,626</b>	<b>5,633</b>	<b>5,649</b>	<b>5,654</b>	<b>5,657</b>	<b>5,665</b>	<b>5,676</b>	<b>5,671</b>	<b>5,675</b>	<b>5,680</b>	<b>5,685</b>	<b>5,694</b>
Non Bed	151	149	153	156	148	143	145	144	143	144	144	146
<b>Net Term</b>	<b>5,475</b>	<b>5,484</b>	<b>5,496</b>	<b>5,498</b>	<b>5,509</b>	<b>5,522</b>	<b>5,531</b>	<b>5,527</b>	<b>5,532</b>	<b>5,536</b>	<b>5,541</b>	<b>5,548</b>
<b>Rider</b>												
<b>Admissions</b>												
New Commitments	65	69	72	80	71	82	79	68	82	79	77	85
Failed Probation	54	70	68	70	69	72	70	73	73	74	75	73
<b>Total</b>	<b>119</b>	<b>139</b>	<b>140</b>	<b>150</b>	<b>140</b>	<b>154</b>	<b>149</b>	<b>141</b>	<b>155</b>	<b>153</b>	<b>152</b>	<b>158</b>
<b>Releases</b>												
Term	16	16	17	18	17	16	15	16	16	17	17	16
Probation	107	133	141	146	137	126	118	127	128	132	132	132
<b>Total</b>	<b>123</b>	<b>149</b>	<b>158</b>	<b>164</b>	<b>154</b>	<b>142</b>	<b>133</b>	<b>143</b>	<b>144</b>	<b>149</b>	<b>149</b>	<b>148</b>
<b>Net Admission &amp; Releases</b>	<b>-4</b>	<b>-10</b>	<b>-18</b>	<b>-14</b>	<b>-14</b>	<b>12</b>	<b>16</b>	<b>-2</b>	<b>11</b>	<b>4</b>	<b>3</b>	<b>10</b>
<b>Beginning</b>	<b>886</b>	<b>882</b>	<b>872</b>	<b>854</b>	<b>840</b>	<b>826</b>	<b>838</b>	<b>854</b>	<b>852</b>	<b>863</b>	<b>867</b>	<b>870</b>
Net Admissions/Rel	-4	-10	-18	-14	-14	12	16	-2	11	4	3	10
<b>Ending</b>	<b>882</b>	<b>872</b>	<b>854</b>	<b>840</b>	<b>826</b>	<b>838</b>	<b>854</b>	<b>852</b>	<b>863</b>	<b>867</b>	<b>870</b>	<b>880</b>
Non Bed	101	134	128	122	125	122	133	127	121	123	127	125
<b>Net Rider</b>	<b>781</b>	<b>738</b>	<b>726</b>	<b>718</b>	<b>701</b>	<b>716</b>	<b>721</b>	<b>725</b>	<b>742</b>	<b>744</b>	<b>743</b>	<b>755</b>

Flow Model Forecast  
FY 2012 (Males)

Monthly Population Forecast

	Jul	Aug	Sep	Oct	Nov	Dec	Jan	Feb	Mar	Apr	May	Jul
<b>Parole Violator</b>												
Admissions												
Parole	68	74	77	75	68	69	65	64	69	75	76	68
Releases												
Term	68	52	51	49	49	50	47	48	47	46	43	43
Reinstated Parole	39	28	27	27	27	27	25	26	25	24	23	23
Discharged	0	2	2	2	2	2	2	2	2	2	2	2
Total	107	82	80	78	78	79	74	76	74	72	68	68
Net Admission & Releases	-39	-8	-3	-3	-10	-10	-9	-12	-5	3	8	0
Beginning	606	567	559	556	553	543	533	524	512	507	510	518
Net Admissions/Rel	-39	-8	-3	-3	-10	-10	-9	-12	-5	3	8	0
Ending	567	559	556	553	543	533	524	512	507	510	518	518
Non Bed	172	188	205	212	202	195	189	176	169	184	188	180
Net Parole Violator	395	371	351	341	341	338	335	336	338	326	330	338
<b>Net Incarcerations</b>												
	6,651	6,593	6,573	6,557	6,551	6,576	6,587	6,588	6,612	6,606	6,614	6,641
<b>Probation</b>												
Admissions												
New Commitments	128	162	165	181	163	184	184	159	193	186	177	194
Successful Rider	106	133	141	146	137	126	118	127	128	132	132	132
Total	234	295	306	327	300	310	302	286	321	318	309	326
Releases												
To Rider	54	70	68	70	69	72	70	73	73	74	75	73
Revoked Probation	42	33	33	34	34	33	36	36	35	36	35	36
Discharged	143	167	174	164	163	163	158	153	157	151	157	166
Total	239	270	275	268	266	268	264	262	265	261	267	275
Net Admission & Releases	-5	25	31	59	34	42	38	24	56	57	42	51
Beginning	10,339	10,334	10,359	10,390	10,449	10,483	10,525	10,563	10,587	10,643	10,700	10,742
Net Admissions/Rel	-5	25	31	59	34	42	38	24	56	57	42	51
Ending	10,334	10,359	10,390	10,449	10,483	10,525	10,563	10,587	10,643	10,700	10,742	10,793
Non Caseload	2,139	2,193	2,200	2,208	2,206	2,205	2,227	2,230	2,235	2,227	2,242	2,242
Net Probation Caseload	8,195	8,166	8,190	8,241	8,277	8,320	8,336	8,357	8,408	8,473	8,500	8,551

Flow Model Forecast  
FY 2012 (Males)

Monthly Population Forecast

	Jul	Aug	Sep	Oct	Nov	Dec	Jan	Feb	Mar	Apr	May	Jun
<b>Parole</b>												
Admissions												
Paroled	96	102	96	112	111	105	101	110	108	109	102	105
Re-instated Violator	42	28	27	27	27	27	25	26	25	24	23	23
Total	138	130	123	139	138	132	126	136	133	133	125	128
Releases												
Parole Violator	71	74	77	75	68	69	65	64	69	75	76	68
Discharged	8	41	42	43	39	37	36	35	36	37	40	39
Total	79	115	119	118	107	106	101	99	105	112	116	107
Net Admission & Releases	59	15	4	21	31	26	25	37	28	21	9	21
Beginning												
Net Admissions/Rel	3,389	3,448	3,463	3,467	3,488	3,519	3,545	3,570	3,607	3,635	3,656	3,665
Ending	59	15	4	21	31	26	25	37	28	21	9	21
Non Caseload	3,448	3,463	3,467	3,488	3,519	3,545	3,570	3,607	3,635	3,656	3,665	3,686
Net Parole Caseload	878	869	871	877	883	898	899	915	915	912	916	926
	2,570	2,594	2,596	2,611	2,636	2,647	2,671	2,692	2,720	2,744	2,749	2,760
<b>Net CC Caseload</b>	<b>10,765</b>	<b>10,760</b>	<b>10,786</b>	<b>10,852</b>	<b>10,913</b>	<b>10,967</b>	<b>11,007</b>	<b>11,049</b>	<b>11,128</b>	<b>11,217</b>	<b>11,249</b>	<b>11,311</b>
<b>Net Bed and Caseload</b>	<b>17,416</b>	<b>17,353</b>	<b>17,359</b>	<b>17,409</b>	<b>17,464</b>	<b>17,543</b>	<b>17,594</b>	<b>17,637</b>	<b>17,740</b>	<b>17,823</b>	<b>17,863</b>	<b>17,952</b>
<b>Forecast Monthly Average Bed Demand</b>												
	6,482	6,622	6,583	6,565	6,554	6,564	6,582	6,588	6,600	6,609	6,610	6,628
<b>Forecast Monthly Average Case Demand</b>												
	10,360	10,763	10,773	10,819	10,883	10,940	10,987	11,028	11,089	11,173	11,233	11,280

Flow Model Forecast  
FY 2012 (Females)

Term	Actual Population and YTD Forecast Population												YTD Act	YTD Fore	YTD O/(U)	
	Jul Act	Aug Act	Sep Act	Oct Act	Nov Act	Dec Act	Jan Act	Feb Act	Mar Act	Apr Act	May Act	Jun Act				
<b>Admissions</b>																
New Commitments	5	4	2	3	3	4								21	30	-9
Failed Riders	3	8	2	7	2	4								26	25	1
Revoked Probation	7	11	7	7	8	10								50	61	-11
Revoked Parole	3	11	2	1	19	2								38	44	-6
<b>Total Admissions</b>	<b>18</b>	<b>34</b>	<b>13</b>	<b>18</b>	<b>32</b>	<b>20</b>								<b>135</b>	<b>160</b>	<b>-25</b>
<b>Releases</b>																
Paroled	8	9	12	13	13	22								77	65	12
Discharged	4	4	4	8	13	3								36	32	4
<b>Total Releases</b>	<b>12</b>	<b>13</b>	<b>16</b>	<b>21</b>	<b>26</b>	<b>25</b>								<b>113</b>	<b>97</b>	<b>16</b>
<b>Net Admissions/Releases</b>	<b>6</b>	<b>21</b>	<b>-3</b>	<b>-3</b>	<b>6</b>	<b>-5</b>								<b>22</b>	<b>63</b>	<b>-41</b>
<b>Beginning</b>	<b>591</b>	<b>597</b>	<b>618</b>	<b>615</b>	<b>612</b>	<b>618</b>										
Net Admissions/Releases	6	21	-3	-3	6	-5								22	63	-41
<b>Ending</b>	<b>597</b>	<b>618</b>	<b>615</b>	<b>612</b>	<b>618</b>	<b>613</b>								<b>613</b>	<b>654</b>	<b>-41</b>
Non Bed	12	20	18	15	13	12								12	16	-4
<b>Net Term</b>	<b>585</b>	<b>598</b>	<b>597</b>	<b>597</b>	<b>605</b>	<b>601</b>								<b>601</b>	<b>638</b>	<b>-37</b>
<b>Rider</b>																
<b>Admissions</b>																
New Commitments	7	14	19	22	14	14								90	96	-6
Failed Probation	22	29	19	27	33	23								153	134	19
<b>Total</b>	<b>29</b>	<b>43</b>	<b>38</b>	<b>49</b>	<b>47</b>	<b>37</b>								<b>243</b>	<b>230</b>	<b>13</b>
<b>Releases</b>																
Term	3	8	2	7	2	4								26	25	1
Probation	34	23	29	40	48	44								218	207	11
<b>Total</b>	<b>37</b>	<b>31</b>	<b>31</b>	<b>47</b>	<b>50</b>	<b>48</b>								<b>244</b>	<b>232</b>	<b>12</b>
<b>Net Admissions/Releases</b>	<b>-8</b>	<b>12</b>	<b>7</b>	<b>2</b>	<b>-3</b>	<b>-11</b>								<b>-1</b>	<b>-2</b>	<b>1</b>
<b>Beginning</b>	<b>287</b>	<b>279</b>	<b>291</b>	<b>298</b>	<b>300</b>	<b>297</b>										
Net Admissions/Releases	-8	12	7	2	-3	-11								-1	-2	1
<b>Ending</b>	<b>279</b>	<b>291</b>	<b>298</b>	<b>300</b>	<b>297</b>	<b>286</b>								<b>286</b>	<b>285</b>	<b>1</b>
Non Bed	29	26	33	48	44	36								36	35	1
<b>Net Rider</b>	<b>250</b>	<b>265</b>	<b>265</b>	<b>252</b>	<b>253</b>	<b>250</b>								<b>250</b>	<b>250</b>	<b>0</b>

Flow Model Forecast  
FY 2012 (Females)

	Jul	Aug	Sep	Oct	Nov	Dec	Jan	Feb	Mar	Apr	May	Jun	YTD Act	YTD Fore	YTD O/(U)
<b>Parole Violator</b>															
Admissions															
Parole	13	10	11	5	7	8							54	66	-12
Releases															
Term	3	11	2	1	19	2							38	44	-6
Reinstated Parole	9	3	11	4	4	3							34	30	4
Discharged	3	1	0	1	1	0							6	8	-2
Total	15	15	13	6	24	5							78	82	-4
Net Admissions/Releases	-2	-5	-2	-1	-17	3							-24	-16	-8
Beginning	84	82	77	75	74	57									
Net Admissions/Releases	-2	-5	-2	-1	-17	3							-24	-16	-8
Ending	82	77	75	74	57	60							60	68	-8
Non Bed	24	21	21	20	25	26							26	28	-2
Total Incarcerated	58	56	54	54	32	34							34	40	-6
Net Incarcerations	893	919	916	903	890	885							885	928	-43
<b>Probation</b>															
Admissions															
New Commitments	49	71	50	54	65	69							358	365	-7
Successful Rider	34	23	28	41	48	44							218	207	11
Total	83	94	78	95	113	113							576	572	4
Releases															
Sent to Rider	22	29	19	27	33	23							153	134	19
Revoked Probation	7	11	7	7	8	10							50	61	-11
Discharged	45	63	60	50	54	51							323	314	9
Total	74	103	86	84	95	84							526	509	17
Net Admissions/Releases	9	-9	-8	11	18	29							50	63	-13
Beginning	3,431	3,440	3,431	3,423	3,434	3,452									
Net Admissions/Releases	9	-9	-8	11	18	29							50	63	-13
Ending	3,440	3,431	3,423	3,434	3,452	3,481							3,481	3,494	-13
Non Caseload	548	568	573	568	569	574							574	580	-6
Net Probation Caseload	2,892	2,863	2,850	2,866	2,883	2,907							2,907	2,914	-7

Flow Model Forecast  
FY 2012 (Females)

	Actual Population and YTD Forecast Population							YTD	YTD	YTD					
	Jul	Aug	Sep	Oct	Nov	Dec	Jan	Feb	Mar	Apr	May	Jun	Act	Fore	O/(U)
<b>Parole</b>															
Beginning															
Admissions															
Paroled	8	9	12	13	13	22							77	65	12
Re-instated Violator	11	3	11	6	6	3							40	32	8
Total	19	12	23	19	19	25							117	97	20
Releases															
Parole Violator	10	10	11	5	7	8							51	63	-12
Discharged	1	31	2	0	12	0							46	35	11
Total	11	41	13	5	19	8							97	98	-1
Net Admissions/Releases	8	-29	10	14	0	17							20	-1	21
Beginning															
Net Admissions/Releases	8	-29	10	14	0	17							20	-1	21
Ending															
Non Caseload	84	77	80	83	86	90							90	81	9
Net Parole Caseload	442	420	427	438	435	448							448	436	12
Net CC Caseload															
Net CC Caseload	3,334	3,283	3,277	3,304	3,318	3,355							3,355	3,350	5
Net Bed and Caseload															
Net Bed and Caseload	4,227	4,202	4,193	4,207	4,208	4,240	0	0	0	0	0	0	4,240	4,278	-38

Flow Model Forecast  
FY 2012 (Females)

Term	Monthly Population Forecast											
	Jul	Aug	Sep	Oct	Nov	Dec	Jan	Feb	Mar	Apr	May	Jun
<b>Admissions</b>	Forecast	Forecast	Forecast	Forecast	Forecast	Forecast	Forecast	Forecast	Forecast	Forecast	Forecast	Forecast
New Commitments	5	5	5	5	3	7	3	5	7	4	4	5
Failed Riders	3	5	5	4	4	4	4	4	4	4	4	5
Revoked Probation	7	11	11	10	11	11	11	11	12	12	12	12
Revoked Parole	3	10	9	8	8	6	7	7	7	7	7	6
<b>Total Admissions</b>	<b>18</b>	<b>31</b>	<b>30</b>	<b>27</b>	<b>26</b>	<b>28</b>	<b>25</b>	<b>27</b>	<b>30</b>	<b>27</b>	<b>27</b>	<b>28</b>
<b>Releases</b>												
Paroled	8	14	13	9	10	11	11	13	14	13	16	16
Discharged	4	5	5	6	6	6	7	6	6	6	5	5
<b>Total Releases</b>	<b>12</b>	<b>19</b>	<b>18</b>	<b>15</b>	<b>16</b>	<b>17</b>	<b>18</b>	<b>19</b>	<b>20</b>	<b>19</b>	<b>21</b>	<b>21</b>
<b>Net Admissions/Releases</b>	<b>6</b>	<b>12</b>	<b>12</b>	<b>12</b>	<b>10</b>	<b>11</b>	<b>7</b>	<b>8</b>	<b>10</b>	<b>8</b>	<b>6</b>	<b>7</b>
<b>Beginning</b>	<b>591</b>	<b>597</b>	<b>609</b>	<b>621</b>	<b>633</b>	<b>643</b>	<b>654</b>	<b>661</b>	<b>669</b>	<b>679</b>	<b>687</b>	<b>693</b>
Net Admissions/Rel	6	12	12	12	10	11	7	8	10	8	6	7
<b>Ending</b>	<b>597</b>	<b>609</b>	<b>621</b>	<b>633</b>	<b>643</b>	<b>654</b>	<b>661</b>	<b>669</b>	<b>679</b>	<b>687</b>	<b>693</b>	<b>700</b>
Non Bed	12	16	16	18	15	16	16	15	16	18	17	16
<b>Net Term</b>	<b>585</b>	<b>593</b>	<b>605</b>	<b>615</b>	<b>628</b>	<b>638</b>	<b>645</b>	<b>654</b>	<b>663</b>	<b>669</b>	<b>676</b>	<b>684</b>
<b>Rider</b>												
<b>Admissions</b>												
New Commitments	7	20	17	17	17	18	21	19	25	23	21	20
Failed Probation	22	23	23	22	22	22	22	24	24	24	24	24
<b>Total</b>	<b>29</b>	<b>43</b>	<b>40</b>	<b>39</b>	<b>39</b>	<b>40</b>	<b>43</b>	<b>43</b>	<b>49</b>	<b>47</b>	<b>45</b>	<b>44</b>
<b>Releases</b>												
Term	3	5	5	4	4	4	4	4	4	4	4	5
Probation	34	37	38	34	32	32	33	36	35	35	36	37
<b>Total</b>	<b>37</b>	<b>42</b>	<b>43</b>	<b>38</b>	<b>36</b>	<b>36</b>	<b>37</b>	<b>40</b>	<b>39</b>	<b>39</b>	<b>40</b>	<b>42</b>
<b>Net Admission &amp; Releases</b>	<b>-8</b>	<b>1</b>	<b>-3</b>	<b>1</b>	<b>3</b>	<b>4</b>	<b>6</b>	<b>3</b>	<b>10</b>	<b>8</b>	<b>5</b>	<b>2</b>
<b>Beginning</b>	<b>287</b>	<b>279</b>	<b>280</b>	<b>277</b>	<b>278</b>	<b>281</b>	<b>285</b>	<b>291</b>	<b>294</b>	<b>304</b>	<b>312</b>	<b>317</b>
Net Admissions/Rel	-8	1	-3	1	3	4	6	3	10	8	5	2
<b>Ending</b>	<b>279</b>	<b>280</b>	<b>277</b>	<b>278</b>	<b>281</b>	<b>285</b>	<b>291</b>	<b>294</b>	<b>304</b>	<b>312</b>	<b>317</b>	<b>319</b>
Non Bed	29	32	35	33	30	35	29	33	34	34	35	32
<b>Net Rider</b>	<b>250</b>	<b>248</b>	<b>242</b>	<b>245</b>	<b>251</b>	<b>250</b>	<b>262</b>	<b>261</b>	<b>270</b>	<b>278</b>	<b>282</b>	<b>287</b>

Flow Model Forecast  
FY 2012 (Females)

Monthly Population Forecast

	Jul	Aug	Sep	Oct	Nov	Dec	Jan	Feb	Mar	Apr	May	Jul
<b>Parole Violator</b>												
Admissions												
Parole	13	9	11	11	12	10	10	10	13	12	11	8
Releases												
Term	3	10	9	8	8	6	7	7	7	7	7	6
Reinstated Parole	9	5	5	4	4	3	4	4	4	4	4	3
Discharged	3	1	1	1	1	1	1	1	1	1	1	1
Total	15	16	15	13	13	10	12	12	12	12	12	10
Net Admission & Releases	-2	-7	-4	-2	-1	0	-2	-2	1	0	-1	-2
Beginning												
Net Admissions/Rel	-2	-7	-4	-2	-1	0	-2	-2	1	0	-1	-2
Ending	82	75	71	69	68	68	66	64	65	65	64	62
Non Bed	24	32	29	26	27	28	25	31	29	25	24	24
Net Parole Violator	58	43	42	43	41	40	41	33	36	40	40	38
<b>Net Incarcerations</b>												
	893	884	889	903	920	928	948	948	969	987	998	1,009
<b>Probation</b>												
Admissions												
New Commitments	49	56	63	70	61	66	64	55	73	71	62	66
Successful Rider	34	37	38	34	32	32	33	36	35	35	36	37
Total	83	93	101	104	93	98	97	91	108	106	98	103
Releases												
To Rider	22	23	23	22	22	22	22	24	24	24	24	24
Revoked Probation	7	11	11	10	11	11	11	11	12	12	12	12
Discharged	45	54	56	55	50	54	51	51	52	51	54	57
Total	74	88	90	87	83	87	84	86	88	87	90	93
Net Admission & Releases	9	5	11	17	10	11	13	5	20	19	8	10
Beginning												
Net Admissions/Rel	9	5	11	17	10	11	13	5	20	19	8	10
Ending	3,440	3,445	3,456	3,473	3,483	3,494	3,507	3,512	3,532	3,551	3,559	3,569
Non Caseload	548	573	575	585	583	580	573	577	576	572	577	571
Net Probation Caseload	2,892	2,872	2,881	2,888	2,900	2,914	2,934	2,935	2,956	2,979	2,982	2,998

Flow Model Forecast  
FY 2012 (Females)

Monthly Population Forecast

	Jul	Aug	Sep	Oct	Nov	Dec	Jan	Feb	Mar	Apr	May	Jun
<b>Parole</b>												
Admissions												
Paroled	8	14	13	9	10	11	11	13	14	13	16	16
Re-instated Violator	11	5	5	4	4	3	4	4	4	4	4	3
Total	19	19	18	13	14	14	15	17	18	17	20	19
Releases												
Parole Violator	10	9	11	11	12	10	10	10	13	12	11	8
Discharged	1	7	8	8	6	5	6	5	5	6	5	6
Total	11	16	19	19	18	15	16	15	18	18	16	14
Net Admission & Releases	8	3	-1	-6	-4	-1	-1	2	0	-1	4	5
Beginning	518	526	529	528	522	518	517	516	518	518	517	521
Net Admissions/Rel	8	3	-1	-6	-4	-1	-1	2	0	-1	4	5
Ending	526	529	528	522	518	517	516	518	518	517	521	526
Non Caseload	84	80	79	77	79	81	79	84	83	80	81	82
Net Parole Caseload	442	449	449	445	439	436	437	434	435	437	440	444
<b>Net CC Caseload</b>	<b>3,334</b>	<b>3,321</b>	<b>3,330</b>	<b>3,333</b>	<b>3,339</b>	<b>3,350</b>	<b>3,371</b>	<b>3,369</b>	<b>3,391</b>	<b>3,416</b>	<b>3,422</b>	<b>3,442</b>
<b>Net Bed and Caseload</b>	<b>4,227</b>	<b>4,205</b>	<b>4,219</b>	<b>4,236</b>	<b>4,259</b>	<b>4,278</b>	<b>4,319</b>	<b>4,317</b>	<b>4,360</b>	<b>4,403</b>	<b>4,420</b>	<b>4,451</b>
<b>Forecast Monthly Average Bed Demand</b>	3,603	889	887	896	912	924	938	948	959	978	993	1,004
<b>Forecast Monthly Average Case Demand</b>	6,645	3,328	3,326	3,332	3,336	3,345	3,361	3,370	3,380	3,404	3,419	3,432