

Idaho Department of Correction

Fiscal Year 2007 Executive Summary

Mission

*The department's mission is to protect the public.
We safely manage offenders,
provide opportunities for change, and successfully
return offenders to communities.*



A Message from Director Brent Reinke



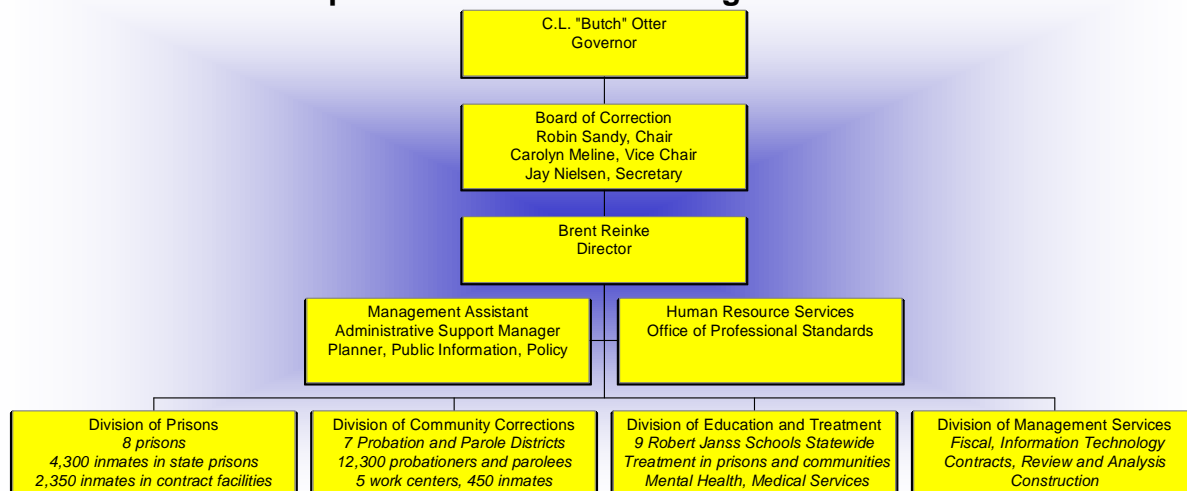
Director Brent D. Reinke

Midway through fiscal year 2007 I was given the opportunity to lead the Idaho Department of Correction, an agency of committed professionals. I plan to move forward with the new organizational structure created by Director Killeen and will continue to engage staff in dialogue about building on past successes. The new structure lays a solid foundation for the most critical issue ahead, managing corrections in a way that provides the best value for the taxpayers' funding this public service.

I believe the state's best return on investment in corrections comes from a balanced approach. Our mission is to protect the public. We do this through providing secure prisons, holding offenders accountable and reducing their risk through education and treatment. The second page of this document outlines current department program success numbers. Parolees who completed programs are 21% less likely to commit a new crime. That is value for the dollar.

As the number of offenders managed in prison and communities continues to grow, providing effective treatment is the best way to impact and reduce growth.

Idaho Department of Correction Organizational Chart



The Department Structure

The new structure mirrors the statutory duties of the department, with divisions to manage incarcerated offenders, supervised offenders on probation and parole and rehabilitative services. The fourth division, management services, provides support services including budgeting and contract monitoring. The chart above briefly outlines primary oversight responsibilities for each division.

IDOC Fiscal Year 2007 Executive Summary



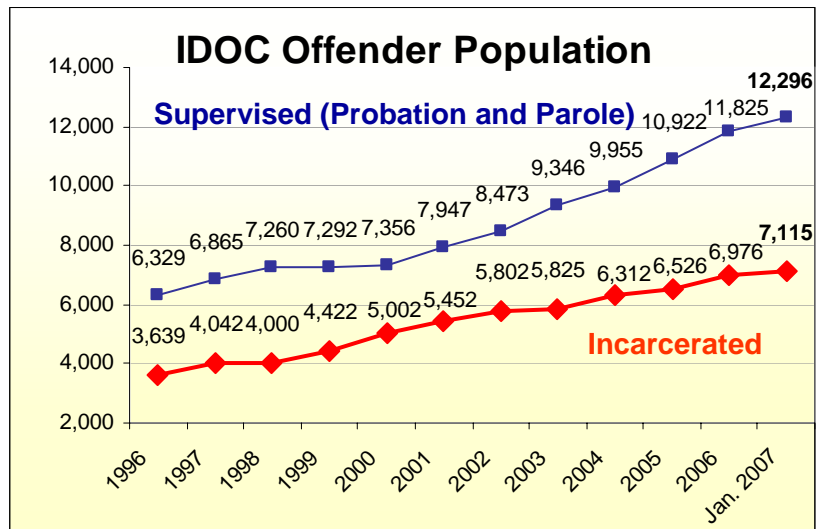
Growth

Idaho managed 7,116 inmates as of January 1, 2007. Approximately 4,750 of those are housed in state-run facilities. Contract beds are utilized to house a third of all inmates. Idaho inmates occupy 430 beds out of state, 450 county jail beds and approximately 1,500 beds at the privately run prison, Idaho Correctional Center.

The department currently manages 12,296 probationers and parolees.

Forecast Growth

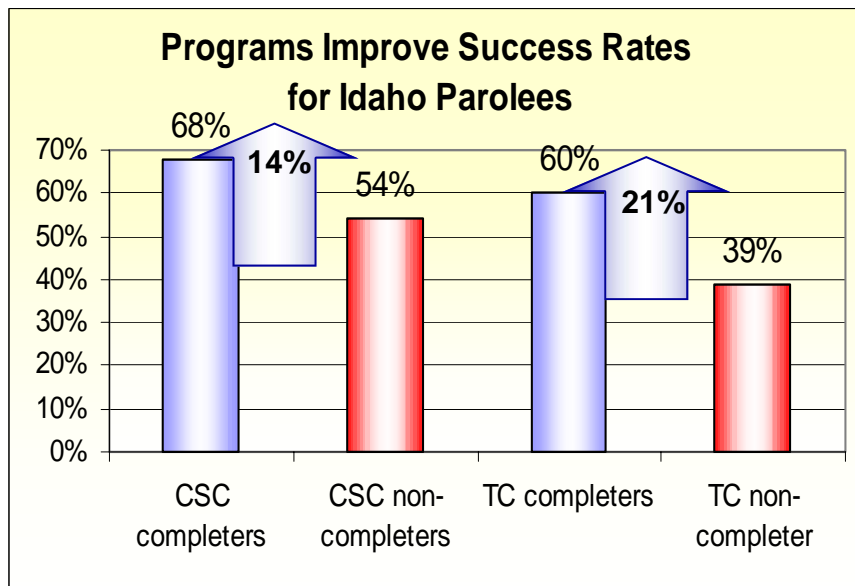
The *Offender Population Forecast FY 2007 to 2010* anticipates the prison population will increase by an average of 40 inmates per month and the supervised population will increase by an average of 70 offenders per month during the next four years.



Idaho's prison population increased 450 inmates in FY06. The number of offenders on probation and parole grew by 971 in FY06.

Best Return on Investment

Education and treatment offer the best return on investment in the correction's arena because of the proven impact on crime reduction. The newly released *Offender Programs and Education Report* charts Idaho program impacts on recidivism.



The chart illustrates the success of those who complete Cognitive Self Change and Therapeutic Communities compared to those who do not complete.

- Idaho parolees who completed Cognitive Self Change (CSC) **succeed on parole at a rate 14% higher** than those who needed but did not complete CSC prior to parole.
- Those completing a therapeutic community prior to parole are **21% more likely to succeed on parole** than those needing the therapeutic community who did not complete the program.

A new *Washington State Institute for Public Policy* report measures the monetary impact of treatment. Research indicates offenders completing a drug treatment program, such as a therapeutic community, are 5.7% less likely to commit a new crime for a net **economic benefit of \$7,835 per inmate treated.**