

IDAHO DEPARTMENT OF CORRECTION

STANDARD REPORT



JULY 2015

The Idaho Department of Correction Standard Report: July 2015 Snapshot contains a monthly overview of incarceration and community supervision offenders.

Revised March 2016
Revisions made to: Section 2.1 Admissions and Releases



TABLE *of* CONTENTS

Section 1: Incarceration Overview

- 1.1 Admissions and Releases Page 3
- 1.2 Monthly Population Change Page 4
- 1.3 By Crime Group Page 4
- 1.4 By Institution and Legal Status Page 5-6
- 1.5 By Demographics Page 7

Section 2: Community Corrections Overview

- 2.1 Admissions and Releases Page 8
- 2.2 Monthly Population Change Page 9
- 2.3 By Crime Group Page 9
- 2.4 By District and Legal Status Page 10
- 2.5 By Demographics Page 10-11

Section 3: Terms and Definitions

- 3.1 Glossary Page 12-13

SECTION 1: INCARCERATION OVERVIEW

1.1 Admissions and Releases

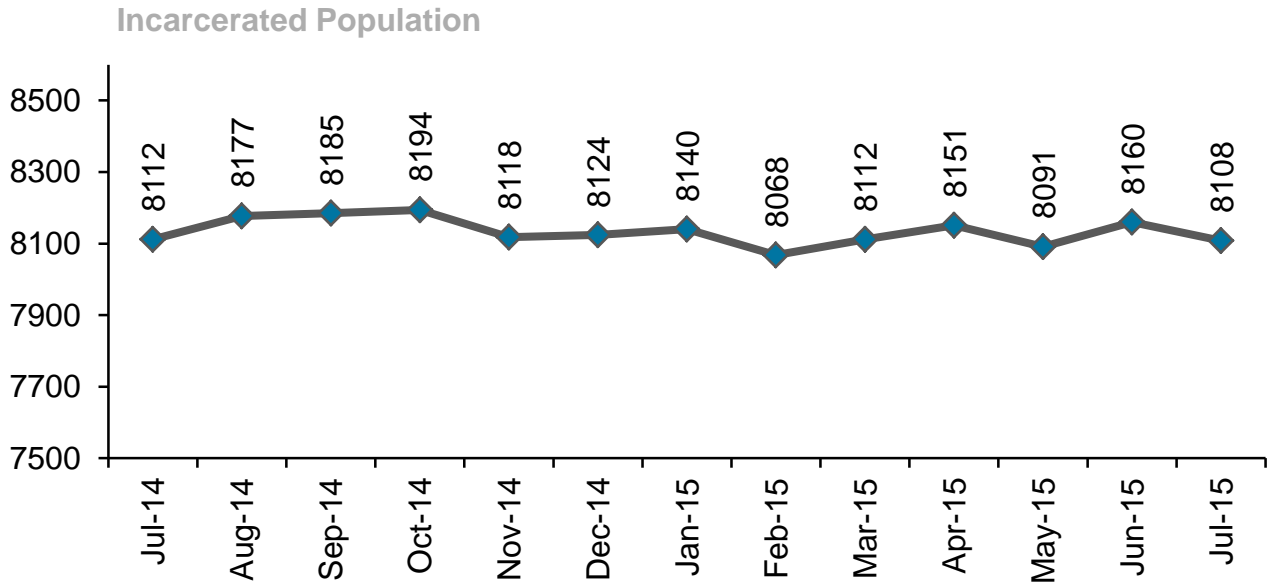
Incarcerated Offender Admissions	Termer	Rider	Parole Violator	Total
Beginning Count as of July 1, 2015	6564	1153	443	8160
New Commitments	33	83	0	116
Revoked Probation	61	92	0	153
Revoked Parole	49	0	0	49
Failed Rider	28	0	0	28
Violated Parole	0	0	159	159
From Other Status	0	1	0	1
Total	171	176	159	506

Incarcerated Offender Releases	Termer	Rider	Parole Violator	Total
To Parole	181	0	57	238
To Probation	0	168	0	168
To Retained Jurisdiction (Rider)	1	0	0	1
To Term Incarceration	0	28	49	77
To Other Status	1	0	0	1
Discharged	59	1	0	60
Total	242	197	106	545

Net Admissions/Releases	Termer	Rider	Parole Violator	Total
Net Admissions/Releases	-71	-21	53	-39
Ending Count	6493	1132	496	8121
Offenders in Transition*	-27	5	9	-13
Net Ending Count as of August 1, 2015	6466	1137	505	8108

*Offenders in Transition is an inherent "lag time" in offender movement that may take a few days to be reflected in the data offender management system.

1.2 Monthly Population Change



1.3 Distribution by Crime Group

Crime Group	Term	% Term	Rider	% Rider	Violator	% Violator	Total	% Total
Murder/ Man	458	7.1%	6	0.5%	4	0.8%	468	5.8%
Sex	1576	24.4%	76	6.7%	70	13.9%	1722	21.2%
Assault	1720	26.6%	266	23.4%	150	29.7%	2136	26.3%
Property	1355	21.0%	317	27.9%	149	29.5%	1821	22.5%
Alcohol	270	4.2%	94	8.3%	13	2.6%	3377	4.6%
Drug	1085	16.8%	376	33.1%	119	23.6%	1580	19.5%
Pending*	2	0.0%	2	0.2%	0	0.0%	4	0.0%
Total	6466	100%	1137	100%	505	100%	8108	100%
Percentage	79.7%		14.0%		6.2%		100%	

*Pending count reflects the incarcerated offenders waiting to be adjudicated for a new crime or the data has not yet been updated in the data management system.

1.4 Distribution by Institution and Legal Status

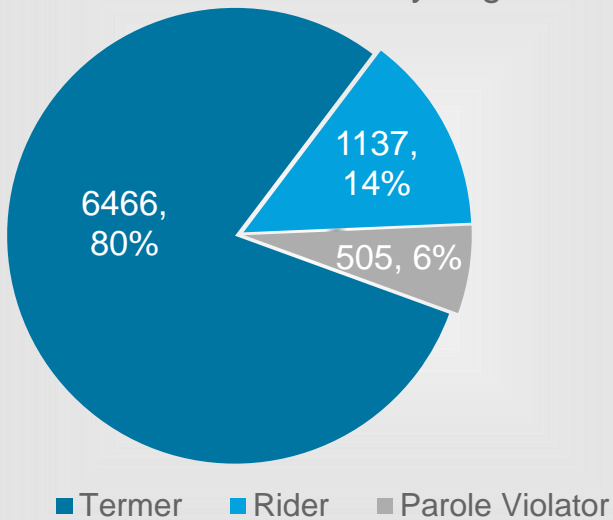
Institutions	Term	Rider	Violator	Total	% Total
IMSI (Male Offenders): Idaho Maximum Security Institution	453	0	2	455	5.6%
ISCI (Male Offenders): Idaho State Correctional Institution	1260	107	87	1454	17.9%
SICI (Male Offenders): South Idaho Correctional Institution	560	0	0	560	6.9%
ICIO (Male Offenders): Idaho Correctional Institution – Orofino	548	19	0	567	7.0%
NICI (Male Offenders): North Idaho Correctional Institution	0	389	0	389	4.8%
SAWC (Male Offenders): St. Anthony Work Camp	234	0	0	234	2.9%
ISCC (Male Offenders): Idaho State Correctional Center	2010	0	111	2121	26.2%
SBWCC (Female Offenders): South Boise Women’s Correctional Center	91	174	22	287	3.5%
CAPP (Contract - Male Offenders): Correctional Alternative Placement Program	43	278	67	388	4.8%
PRC-SICI (Female Riders): Pre-Release Center	44	59	0	103	1.3%
PRCC (Female Offenders): Pocatello Women’s Correctional Center	249	33	21	303	3.7%
Reentry Centers	Term	Rider	Violator	Total	% Total
CRC Nampa (Male Offenders): Community Reentry Center	84	0	0	84	1.0%
CRC Idaho Falls (Male Offenders): Community Reentry Center	84	0	0	84	1.0%
CRC Treasure Valley (Male Offenders): Community Reentry Center	100	0	0	100	1.2%
CRC East Boise (Female Offenders): Community Reentry Center	97	0	0	97	1.2%

Contract Beds	Term	Rider	Violator	Total	% Total
Kit Carson (Contract - Male Offenders): Kit Carson Contract Beds	209	0	0	209	2.6%
Bonneville Contract (Contract – County Jail): Bonneville Contract Beds	87	0	0	87	1.1%

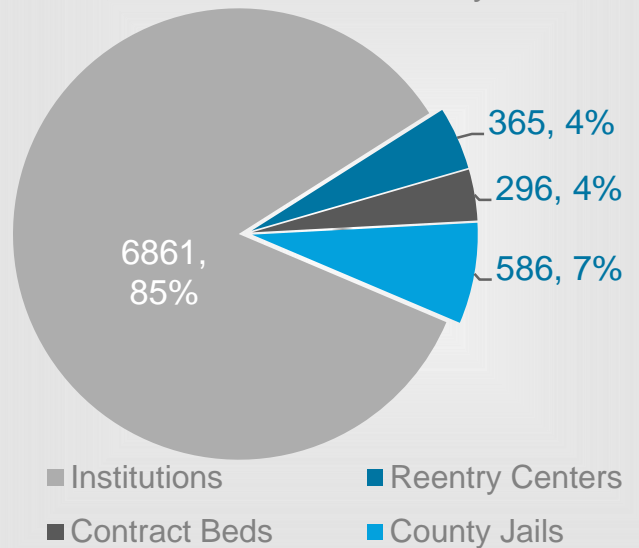
County Jails	Term	Rider	Violator	Total	% Total
County Jails	313	78	195	586	7.2%

Total Distribution By Institution and Legal Status	Term	Rider	Violator	Total	% Total
Total (By Institution & Legal Status): Institutions + Contract Beds + Reentry Centers + County Jails	6466	1137	505	8108	100%

Incarcerated Population
by Legal Status



Incarcerated Population
by Institution



1.5 Distribution by Demographics

Age Range	Term	% Term	Rider	% Rider	Violator	% Violator	Total	% Total
Under 18	0	0.0%	0	0.0%	0	0.0%	0	0.0%
Ages 18-24	702	10.9%	282	24.8%	30	5.9%	1014	12.5%
Ages 25-34	2129	32.9%	452	39.8%	214	42.4%	2795	34.5%
Ages 35-44	1674	25.9%	267	23.5%	155	30.7%	2096	25.9%
Ages 45-54	1196	18.5%	99	8.7%	90	17.8%	1385	17.1%
Ages 55-64	578	8.9%	31	2.7%	14	2.8%	63	7.7%
Ages 65+	187	2.9%	6	0.5%	2	0.4%	195	2.4%
Total	6466	100%	1137	100%	505	100%	8108	100%

Ethnicity	Term	% Term	Rider	% Rider	Violator	% Violator	Total	% Total
Asian	29	0.4%	3	0.3%	2	0.4%	34	0.4%
Black	181	2.8%	24	2.1%	12	2.4%	217	2.7%
Hispanic	985	15.2%	135	11.9%	53	10.5%	1173	14.5%
Indian	252	3.9%	39	3.4%	17	3.4%	308	3.8%
Other	69	1.1%	13	1.1%	5	1.0%	87	1.1%
Unknown	97	1.5%	22	1.9%	2	0.4%	121	1.5%
White	4853	75.1%	901	79.2%	414	82.0%	6168	76.1%
Total	6466	100%	1137	100%	505	100%	8108	100%

Gender	Term	% Term	Rider	% Rider	Violator	% Violator	Total	% Total
Females	649	10.0%	309	27.2%	77	15.2%	1035	12.8%
Males	5817	90.0%	828	72.8%	428	84.8%	7073	87.2%
Total	6466	100%	1137	100%	505	100%	8108	100%

SECTION 2: COMMUNITY OVERVIEW

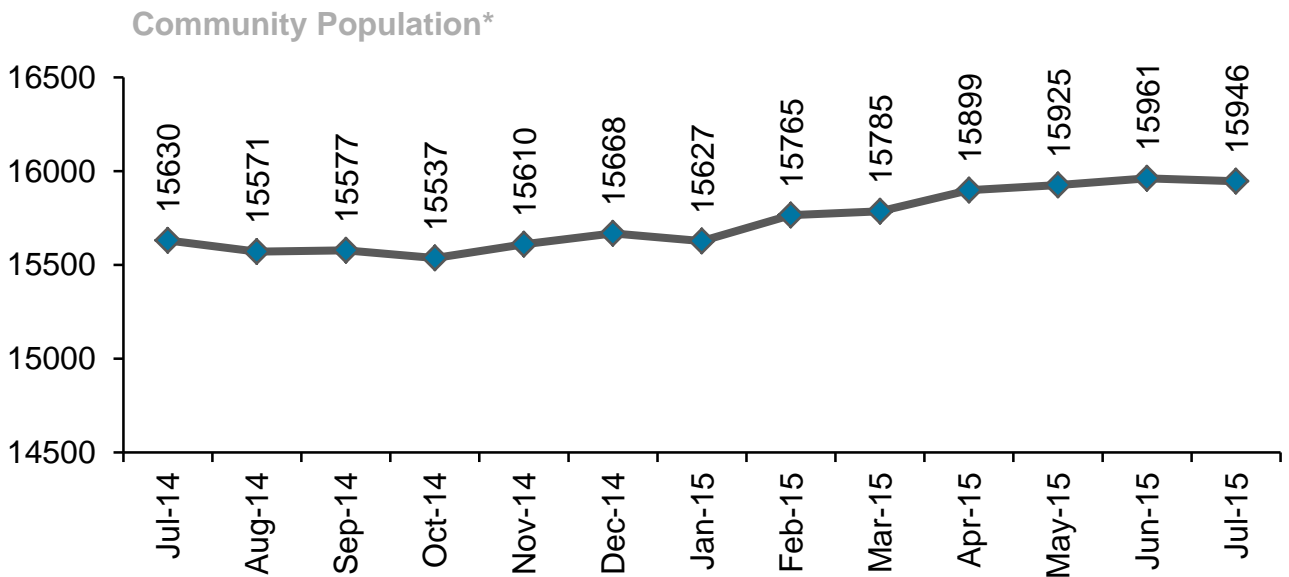
2.1 Admissions and Releases

Community Offender Admissions	Parole	Probation	Total
Beginning Count as of July 1, 2015	3417	10768	14185
New Commitments	5	240	245
Successful Rider	0	155	155
Paroled (New)	158	0	158
Reinstated Parole	65	0	65
From Other Status	0	4	4
Total	228	399	627
Community Offender Releases	Parole	Probation	Total
To Probation or Parole	0	2	2
To Parole Violator	159	0	159
To Retained Jurisdiction (Rider)	0	92	92
To Term Incarceration	0	61	61
Discharged	7	185	192
Total	166	340	506
Net Admissions/Releases	Parole	Probation	Total
Net Admissions/Releases	62	59	121
Gross Ending District Count	3479	10827	14306
Offenders in Transition*	-79	-50	-129
Net Ending District Count	3400	10777	14177
Interstate Compact **	543	1226	1769
Net Ending Count as of August 1, 2015 (including Interstate Compact)	3943	12003	15946

*Offenders in Transition is an inherent "lag time" in offender movement that may take a few days to be reflected in the data offender management system.

**Interstate Compact represents Idaho probationers and parolees who are completing their sentence in another state, but are monitored by Idaho.

2.2 Monthly Population Change



2.3 Distribution by Crime Group

Crime Group	Probation	% Probation	Parole	% Parole	Total	% Total
Murder/ Man	46	0.4%	134	3.4%	180	1.1%
Sex	677	5.6%	652	16.5%	1329	8.3%
Assault	2103	17.5%	990	25.1%	3093	19.4%
Property	3459	28.8%	1027	26.0%	4486	28.1%
Alcohol	1759	14.7%	278	7.1%	2037	12.8%
Drug	3835	32.0%	861	21.8%	4696	29.4%
Pending**	124	1.0%	1	0.0%	125	0.8%
Total	12003	100%	3943	100%	15946	100%
Percentage	75.3%		24.7%		100%	

*Monthly Community Population Change reflects the ending caseload including Interstate Compact offenders.

**Pending Count reflects the community offenders that have not yet been adjudicated or the data has not yet been updated in the data management system.

2.4 Distribution by District and Legal Status

District/Legal Status	Probation	% Probation	Parole	% Parole	Total	% Total
District 0: Limited Supervision Unit	740	6.2%	236	6.0%	976	6.1%
District 1: Coeur d'Alene	1673	13.9%	242	6.1%	1915	12.0%
District 2: Lewiston	521	4.3%	90	2.3%	611	3.8%
District 3: Caldwell	2068	17.2%	591	15.0%	2659	16.7%
District 4: Boise	2587	21.6%	1346	34.1%	3933	24.7%
District 5: Twin Falls	1341	11.2%	427	10.8%	1768	11.1%
District 6: Pocatello	712	5.9%	151	3.8%	863	5.4%
District 7: Idaho Falls	1135	9.5%	317	8.0%	1452	9.1%
+ Interstate Compact	1226	10.2%	543	13.8%	1769	11.1%
Total	12003	100%	3943	100%	15946	100%

2.5 Distribution by Demographics

Age Distribution	Probation	% Probation	Parole	% Parole	Total	% Total
Under 18	2	0.0%	0	0.0%	2	0.0%
Ages 18-24	1960	16.3%	140	3.6%	2100	13.2%
Ages 25-34	4305	35.9%	1274	32.3%	5579	35.0%
Ages 35-44	2908	24.2%	1119	28.4%	4027	25.3%
Ages 45-54	1839	15.3%	899	22.8%	2738	17.2%
Ages 55-64	819	6.8%	400	10.1%	1219	7.6%
Ages 65+	170	1.4%	111	2.8%	281	1.8%
Total	12003	100%	3943	100%	15946	100%

Ethnicity Distribution	Probation	% Probation	Parole	% Parole	Total	% Total
Asian	68	0.6%	39	1.0%	107	0.7%
Black	215	1.8%	130	3.3%	345	2.2%
Hispanic	1311	10.9%	497	12.6%	1808	11.3%
Indian	292	2.4%	100	2.5%	392	2.5%
Other	84	0.7%	29	0.7%	113	0.7%
Unknown	1164	9.7%	58	1.5%	1222	7.7%
White	8869	73.9%	3090	78.4%	11959	75.0%
Total	12003	100%	3943	100%	15946	100%

Gender Distribution	Probation	% Probation	Parole	% Parole	Total	% Total
Females	3317	27.6%	614	15.6%	3931	24.7%
Males	8686	72.4%	3329	84.4%	12015	75.3%
Total	12003	100%	3943	100%	15946	100%

3.1 Glossary

1.Admission: An offender who has been committed by the courts to the Idaho Department of Correction. The offender may enter the department's jurisdiction in Probation, Rider, or Term Status. A subsequent change from Probation or Rider to Term is also typically referred to as an admission to Term.

2.Civil Commitment: A form of confinement for offenders who are mentally ill, incompetent, alcohol or drug addicted, as contrasted with the criminal commitment for their sentence. Since they represent a per diem obligation to the Idaho Department of Correction, they are grouped with Term offenders.

3.Discharged Offender: Offenders whose court commitment is satisfied or who die while under the jurisdiction of the Idaho Department of Correction. Offenders may be discharged from Parole, Probation, Rider, Term or Parole Violator status.

4.Incarcerated: Offenders whose court commitment is satisfied or who die while under the jurisdiction of the Idaho Department of Correction. Offenders may be discharged from Parole, Probation, Rider, Term or Parole Violator status.

5.New Commitment: An offender who has been committed by the courts to the Idaho Department of Correction for the first time or after satisfying a previous court commitment has been committed for a new crime. They may enter a Probation, Rider, or Term status.

6.Non-Idaho Offender: An offender who is sentenced by a jurisdiction other than Idaho, but is housed by the Idaho Department of Correction for security reasons. Since they represent a per diem obligation to the Idaho Department of Correction, they are grouped with Term offenders.

7.Parole Violator: An offender who has been placed on parole and then violates the conditions of their parole. Parole Violator status is usually temporary status until a hearing can be conducted to determine if the offender will be returned to Term or Parole status.

8.Paroled Offender: An offender that the parole commission has decided to place in society after serving a portion of their sentence. They are supervised by a Parole Officer for the remainder of their court commitment. The offender's status is changed from Term to Parole.

9.Probation: An offender that the courts have decided to allow to service their sentence while living in society. They are not incarcerated, but are supervised by a Probation Officer until their court commitment is satisfied.

10.Reinstated Parole: An offender who violated their parole and the Parole Commission subsequently decided to reinstate them in Parole status instead of returning them to prison.

11.Revoked Parole: An offender who, while on parole, violates the conditions of their parole and is placed back in prison by the Parole Commission. Their status changes back to Term.

12.Revoked Probation: An offender who, while serving probation, violates the conditions of their probation and the court changes their sentence to incarceration. The offender's status changes from Probation to Term, or sometimes Rider.

13.Retained Jurisdiction/Rider Incarcerated (Rider): An offender committed to an Idaho Department of Correction Rider program. The courts will retain jurisdiction of this offender until the completion of the Rider program. The courts will subsequently determine whether to place this offender on Probation or Term status or to withhold judgment.

14.Term: An offender who the courts or the Parole Commission has committed to one of the state prisons.

Questions?

Vicky Calderón, Principal Research Analyst

Idaho Department of Correction

Evaluation and Compliance: Research and Analysis

P: 208.658.2147 E: mcaldero@idoc.idaho.gov

