

IDAHO DEPARTMENT OF CORRECTION

STANDARD REPORT



JUNE 2015

The Idaho Department of Correction Standard Report: June 2015 Snapshot contains a monthly overview of incarceration and community supervision offenders.



Revised March 2016
Revisions made to: Section 2.1 Admissions and Releases

TABLE *of* CONTENTS

Section 1: Incarceration Overview

- 1.1 Admissions and Releases Page 3
- 1.2 Monthly Population Change Page 4
- 1.3 By Crime Group Page 4
- 1.4 By Institution and Legal Status Page 5-6
- 1.5 By Demographics Page 7

Section 2: Community Corrections Overview

- 2.1 Admissions and Releases Page 8
- 2.2 Monthly Population Change Page 9
- 2.3 By Crime Group Page 9
- 2.4 By District and Legal Status Page 10
- 2.5 By Demographics Page 10-11

Section 3: Terms and Definitions

- 3.1 Glossary Page 12-13

SECTION 1: INCARCERATION OVERVIEW

1.1 Admissions and Releases

Incarcerated Offender Admissions	Termer	Rider	Parole Violator	Total
Beginning Count as of June 1, 2015	6551	1127	413	8091
New Commitments	49	102	0	151
Revoked Probation	45	105	0	150
Revoked Parole	52	0	0	52
Failed Rider	38	0	0	38
Violated Parole	0	0	149	149
From Other Status	0	2	0	2
Total	184	209	149	542

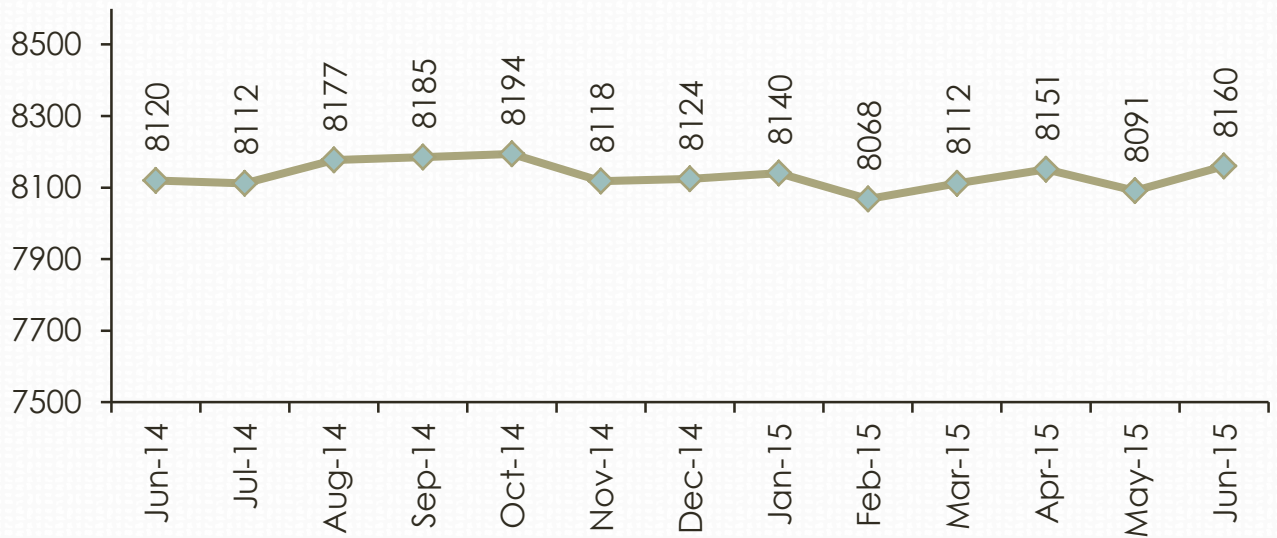
Incarcerated Offender Releases	Termer	Rider	Parole Violator	Total
To Parole	150	0	40	190
To Probation	1	178	0	179
To Retained Jurisdiction (Rider)	2	0	0	2
To Term Incarceration	0	38	52	90
To Other Status	0	0	0	0
Discharged	33	0	0	33
Total	186	216	92	494

Net Admissions/Releases	Termer	Rider	Parole Violator	Total
Net Admissions/Releases	-2	-7	57	48
Ending Count	6549	1120	470	8139
Offenders in Transition*	15	33	-27	21
Net Ending Count as of July 1, 2015	6564	1153	443	8160

*Offenders in Transition is an inherent "lag time" in offender movement that may take a few days to be reflected in the data offender management system.

1.2 Monthly Population Change

Incarcerated Population



1.3 Distribution by Crime Group

Crime Group	Term	% Term	Rider	% Rider	Violator	% Violator	Total	% Total
Murder/Man	462	7.0%	5	0.4%	2	0.5%	469	5.7%
Sex	1584	24.1%	84	7.3%	63	14.2%	1731	21.2%
Assault	1730	26.4%	252	21.9%	137	30.9%	2119	26.0%
Property	1404	21.4%	335	29.1%	122	27.5%	1861	22.8%
Alcohol	281	4.3%	95	8.2%	12	2.7%	388	4.8%
Drug	1099	16.7%	373	32.4%	107	24.2%	1579	19.4%
Pending*	4	0.1%	9	0.8%	0	0.0%	13	0.2%
Total	6564	100%	1153	100%	443	100%	8160	100%
Percentage	80.4%		14.1%		5.4%		100%	

*Pending count reflects the incarcerated offenders waiting to be adjudicated for a new crime or the data has not yet been updated in the data management system.

1.4 Distribution by Institution and Legal Status

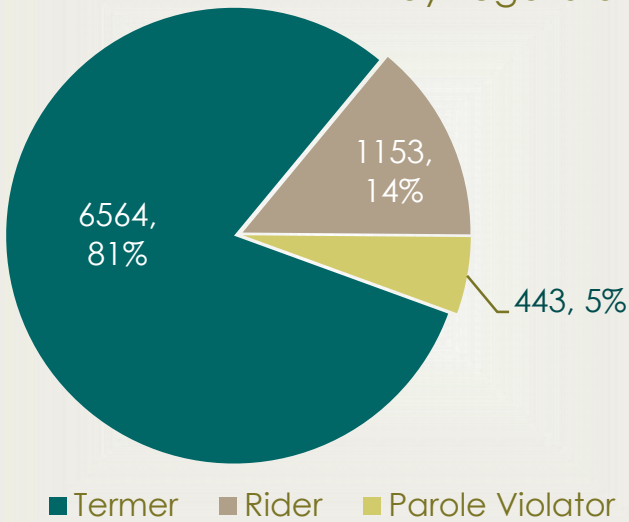
Institutions	Term	Rider	Violator	Total	% Total
IMSI (Male Offenders): Idaho Maximum Security Institution	465	0	3	468	5.7%
ISCI (Male Offenders): Idaho State Correctional Institution	1288	94	53	1435	17.6%
SICI (Male Offenders): South Idaho Correctional Institution	563	0	0	563	6.9%
ICIO (Male Offenders): Idaho Correctional Institution – Orofino	556	8	0	564	6.9%
NICI (Male Offenders): North Idaho Correctional Institution	0	387	0	387	4.7%
SAWC (Male Offenders): St. Anthony Work Camp	237	0	0	237	2.9%
ISCC (Male Offenders): Idaho State Correctional Center	2041	0	91	2132	26.1%
SBWCC (Female Offenders): South Boise Women's Correctional Center	99	173	20	292	3.6%
CAPP (Contract - Male Offenders): Correctional Alternative Placement Program	36	297	65	398	4.9%
PRC-SICI (Female Riders): Pre-Release Center	40	57	0	97	1.2%
PRCC (Female Offenders): Pocatello Women's Correctional Center	243	45	13	301	3.7%
Reentry Centers	Term	Rider	Violator	Total	% Total
CRC Nampa (Male Offenders): Community Reentry Center	84	0	0	84	1.0%
CRC Idaho Falls (Male Offenders): Community Reentry Center	80	0	0	80	1.0%
CRC Treasure Valley (Male Offenders): Community Reentry Center	98	0	0	98	1.2%
CRC East Boise (Female Offenders): Community Reentry Center	99	0	0	99	1.2%

Contract Beds	Term	Rider	Violator	Total	% Total
Kit Carson (Contract - Male Offenders): Kit Carson Contract Beds	210	0	0	210	2.6%
Bonneville Contract (Contract – County Jail): Bonneville Contract Beds	88	0	0	88	1.1%

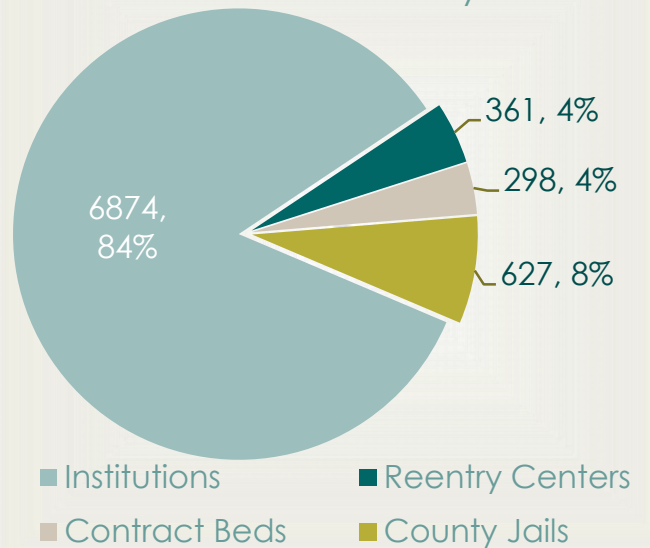
County Jails	Term	Rider	Violator	Total	% Total
County Jails	337	92	198	627	7.7%

Total Distribution By Institution and Legal Status	Term	Rider	Violator	Total	% Total
Total (By Institution & Legal Status): Institutions + Contract Beds + Reentry Centers + County Jails	6564	1153	443	8160	100%

Incarcerated Population
by Legal Status



Incarcerated Population
by Institution



1.5 Distribution by Demographics

Age Range	Term	% Term	Rider	% Rider	Violator	% Violator	Total	% Total
Under 18	0	0.0%	0	0.0%	0	0.0%	0	0.0%
Ages 18-24	722	11.0%	300	26.0%	32	7.2%	1054	12.9%
Ages 25-34	2167	33.0%	452	39.2%	182	41.1%	2801	34.3%
Ages 35-44	1708	26.0%	257	22.3%	140	31.6%	2105	25.8%
Ages 45-54	1211	18.4%	101	8.8%	77	17.4%	1389	17.0%
Ages 55-64	569	8.7%	37	3.2%	11	2.5%	617	7.6%
Ages 65+	187	2.8%	6	0.5%	1	0.2%	194	2.4%
Total	6564	100%	1153	100%	443	100%	8160	100%

Ethnicity	Term	% Term	Rider	% Rider	Violator	% Violator	Total	% Total
Asian	30	0.5%	3	0.3%	1	0.2%	34	0.4%
Black	185	2.8%	22	1.9%	6	1.4%	213	2.6%
Hispanic	1006	15.3%	148	12.8%	50	11.3%	1204	14.8%
Indian	258	3.9%	38	3.3%	15	3.4%	311	3.8%
Other	68	1.0%	14	1.2%	5	1.1%	87	1.1%
Unknown	97	1.5%	30	2.6%	1	0.2%	128	1.6%
White	4920	5.0%	898	77.9%	365	82.4%	6183	75.8%
Total	6564	100%	1153	100%	443	100%	8160	100%

Gender	Term	% Term	Rider	% Rider	Violator	% Violator	Total	% Total
Females	662	10.1%	303	26.3%	60	13.5%	1025	12.6%
Males	5902	89.9%	850	73.7%	383	86.5%	7135	87.4%
Total	6564	100%	1153	100%	443	100%	8160	100%

SECTION 2: COMMUNITY OVERVIEW

2.1 Admissions and Releases

Community Offender Admissions	Parole	Probation	Total
Beginning Count as of June 1, 2015	3392	10767	14159
New Commitments	1	252	253
Successful Rider	0	198	198
Paroled (New)	181	0	181
Reinstated Parole	75	0	75
From Other Status	0	6	6
Total	257	456	713

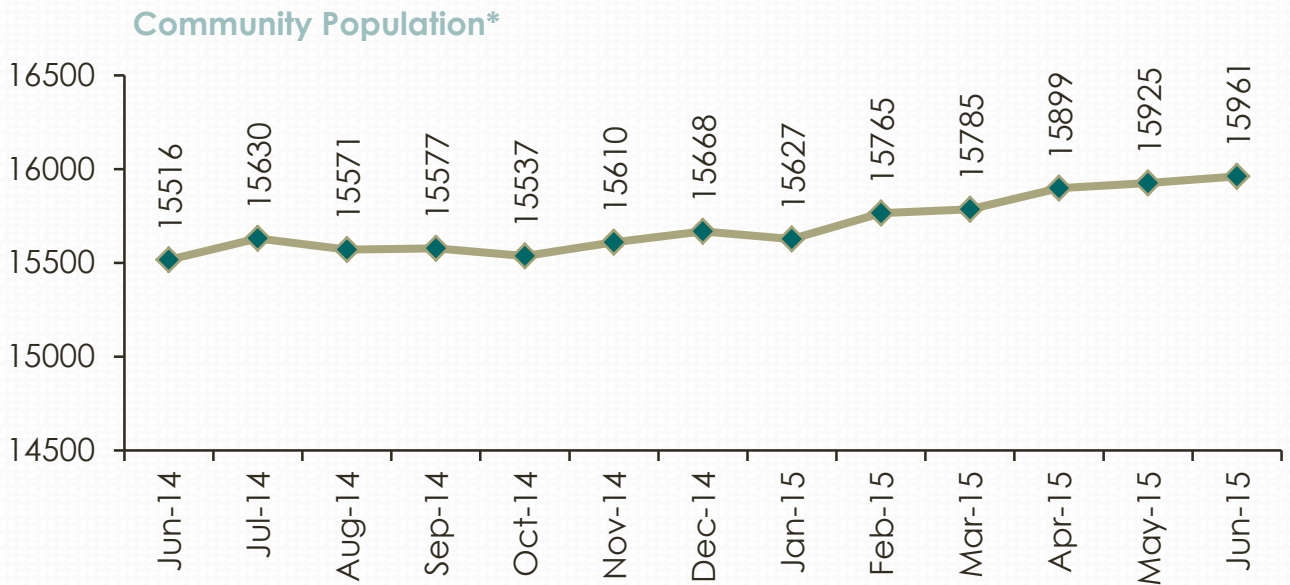
Community Offender Releases	Parole	Probation	Total
To Probation or Parole	0	1	1
To Parole Violator	149	0	149
To Retained Jurisdiction (Rider)	0	105	105
To Term Incarceration	0	46	46
Discharged	61	263	324
Total	210	415	625

Net Admissions/Releases	Parole	Probation	Total
Net Admissions/Releases	47	41	88
Gross Ending District Count	3439	10808	14247
Offenders in Transition*	-22	-40	-62
Net Ending District Count	3417	10768	14185
Interstate Compact **	541	1235	1776
Net Ending Count as of July 1, 2015 (including Interstate Compact)	3958	12003	15961

*Offenders in Transition is an inherent "lag time" in offender movement that may take a few days to be reflected in the data offender management system.

**Interstate Compact represents Idaho probationers and parolees who are completing their sentence in another state, but are monitored by Idaho.

2.2 Monthly Population Change



2.3 Distribution by Crime Group

Crime Group	Probation	% Probation	Parole	% Parole	Total	% Total
Murder/ Man	47	0.4%	136	3.4%	183	1.1%
Sex	675	5.6%	650	16.4%	1325	8.3%
Assault	2119	17.7%	1007	25.4%	3126	19.6%
Property	3472	28.9%	1012	25.6%	4484	28.1%
Alcohol	1756	14.6%	284	7.2%	2040	12.8%
Drug	3808	31.7%	868	21.9%	4676	29.3%
Pending**	126	1.0%	1	0.0%	127	0.8%
Total	12003	100%	3958	100%	15961	100%
Percentage	75.2%		24.8%		100%	

*Monthly Community Population Change reflects the ending caseload including Interstate Compact offenders.

**Pending Count reflects the community offenders that have not yet been adjudicated or the data has not yet been updated in the data management system.

2.4 Distribution by District and Legal Status

District/Legal Status	Probation	% Probation	Parole	% Parole	Total	% Total
District 0: Limited Supervision Unit	694	5.8%	220	5.6%	914	5.7%
District 1: Coeur d'Alene	1672	13.9%	248	6.3%	1920	12.0%
District 2: Lewiston	540	4.5%	89	2.2%	629	3.9%
District 3: Caldwell	2067	17.2%	596	15.1%	2663	16.7%
District 4: Boise	2593	21.6%	1353	34.2%	3946	24.7%
District 5: Twin Falls	1342	11.2%	423	10.7%	1765	11.1%
District 6: Pocatello	717	6.0%	155	3.9%	872	5.5%
District 7: Idaho Falls	1143	9.5%	333	8.4%	1476	9.2%
+ Interstate Compact	1235	10.3%	541	13.7%	1776	11.1%
Total	12003	100%	3958	100%	15961	100%

2.5 Distribution by Demographics

Age Distribution	Probation	% Probation	Parole	% Parole	Total	% Total
Under 18	3	0.0%	0	0.0%	3	0.0%
Ages 18-24	1970	16.4%	134	3.4%	2104	13.2%
Ages 25-34	4304	35.9%	1286	32.5%	5590	35.0%
Ages 35-44	2889	24.1%	1116	28.2%	4005	25.1%
Ages 45-54	1840	15.3%	901	22.8%	2741	17.2%
Ages 55-64	823	6.9%	412	10.4%	1235	7.7%
Ages 65+	174	1.4%	109	2.8%	283	1.8%
Total	12003	100%	3958	100%	15961	100%

Ethnicity Distribution	Probation	% Probation	Parole	% Parole	Total	% Total
Asian	70	0.6%	39	1.0%	109	0.7%
Black	211	1.8%	131	3.3%	342	2.1%
Hispanic	1300	10.8%	486	12.3%	1786	11.2%
Indian	287	2.4%	96	2.4%	383	2.4%
Other	87	0.7%	30	0.8%	117	0.7%
Unknown	1157	9.6%	61	1.5%	1218	7.6%
White	8891	74.1%	3115	78.7%	12006	75.2%
Total	12003	100%	3958	100%	15961	100%

Gender Distribution	Probation	% Probation	Parole	% Parole	Total	% Total
Females	3320	27.7%	628	15.9%	3948	24.7%
Males	8683	72.3%	3330	84.1%	12013	75.3%
Total	12003	100%	3958	100%	15961	100%

SECTION 3: TERMS AND DEFINITIONS

3.1 Glossary

1. **Admission:** An offender who has been committed by the courts to the Idaho Department of Correction. The offender may enter the department's jurisdiction in Probation, Rider, or Term Status. A subsequent change from Probation or Rider to Term is also typically referred to as an admission to Term.
2. **Civil Commitment:** A form of confinement for offenders who are mentally ill, incompetent, alcohol or drug addicted, as contrasted with the criminal commitment for their sentence. Since they represent a per diem obligation to the Idaho Department of Correction, they are grouped with Term offenders.
3. **Discharged Offender:** Offenders whose court commitment is satisfied or who die while under the jurisdiction of the Idaho Department of Correction. Offenders may be discharged from Parole, Probation, Rider, Term or Parole Violator status.
4. **Incarcerated:** Offenders whose court commitment is satisfied or who die while under the jurisdiction of the Idaho Department of Correction. Offenders may be discharged from Parole, Probation, Rider, Term or Parole Violator status.
5. **New Commitment:** An offender who has been committed by the courts to the Idaho Department of Correction for the first time or after satisfying a previous court commitment has been committed for a new crime. They may enter a Probation, Rider, or Term status.
6. **Non-Idaho Offender:** An offender who is sentenced by a jurisdiction other than Idaho, but is housed by the Idaho Department of Correction for security reasons. Since they represent a per diem obligation to the Idaho Department of Correction, they are grouped with Term offenders.
7. **Parole Violator:** An offender who has been placed on parole and then violates the conditions of their parole. Parole Violator status is usually temporary status until a hearing can be conducted to determine if the offender will be returned to Term or Parole status.

8. **Paroled Offender:** An offender that the parole commission has decided to place in society after serving a portion of their sentence. They are supervised by a Parole Officer for the remainder of their court commitment. The offender's status is changed from Term to Parole.
9. **Probation:** An offender that the courts have decided to allow to service their sentence while living in society. They are not incarcerated, but are supervised by a Probation Officer until their court commitment is satisfied.
10. **Reinstated Parole:** An offender who violated their parole and the Parole Commission subsequently decided to reinstate them in Parole status instead of returning them to prison.
11. **Revoked Parole:** An offender who, while on parole, violates the conditions of their parole and is placed back in prison by the Parole Commission. Their status changes back to Term.
12. **Revoked Probation:** An offender who, while serving probation, violates the conditions of their probation and the court changes their sentence to incarceration. The offender's status changes from Probation to Term, or sometimes Rider.
13. **Retained Jurisdiction/Rider Incarcerated (Rider):** An offender committed to an Idaho Department of Correction Rider program. The courts will retain jurisdiction of this offender until the completion of the Rider program. The courts will subsequently determine whether to place this offender on Probation or Term status or to withhold judgment.
14. **Term:** An offender who the courts or the Parole Commission has committed to one of the state prisons.

Questions?

Vicky Calderón, Principal Research Analyst

Idaho Department of Correction

Evaluation and Compliance: Research and Analysis

P: 208.658.2147 E: mcaldero@idoc.idaho.gov

