

# IDAHO DEPARTMENT OF CORRECTION

## STANDARD REPORT



## OCTOBER 2015

The Idaho Department of Correction Standard Report: October 2015 Snapshot contains a monthly overview of incarceration and community supervision offenders.

Revised March 2016



# TABLE *of* CONTENTS

## Section 1: Incarceration Overview

- 1.1 Admissions and Releases Page 3
- 1.2 Monthly Population Change Page 4
- 1.3 By Crime Group Page 4
- 1.4 By Institution and Legal Status Page 5-6
- 1.5 By Demographics Page 7

## Section 2: Community Corrections Overview

- 2.1 Admissions and Releases Page 8
- 2.2 Monthly Population Change Page 9
- 2.3 By Crime Group Page 9
- 2.4 By District and Legal Status Page 10
- 2.5 By Demographics Page 10-11

## Section 3: Terms and Definitions

- 3.1 Glossary Page 12-13

# SECTION 1: INCARCERATION OVERVIEW

## 1.1 Admissions and Releases

Incarcerated Offender Admissions	Termer	Rider	Parole Violator	Total
<b>Beginning Count as of October 1, 2015</b>	<b>6391</b>	<b>1106</b>	<b>515</b>	<b>8012</b>
New Commitments	38	94	0	132
Revoked Probation	57	100	0	157
Revoked Parole	38	0	0	38
Failed Rider	25	0	0	25
Violated Parole	0	0	118	118
From Other Status	0	3	0	3
<b>Total</b>	<b>158</b>	<b>197</b>	<b>118</b>	<b>473</b>

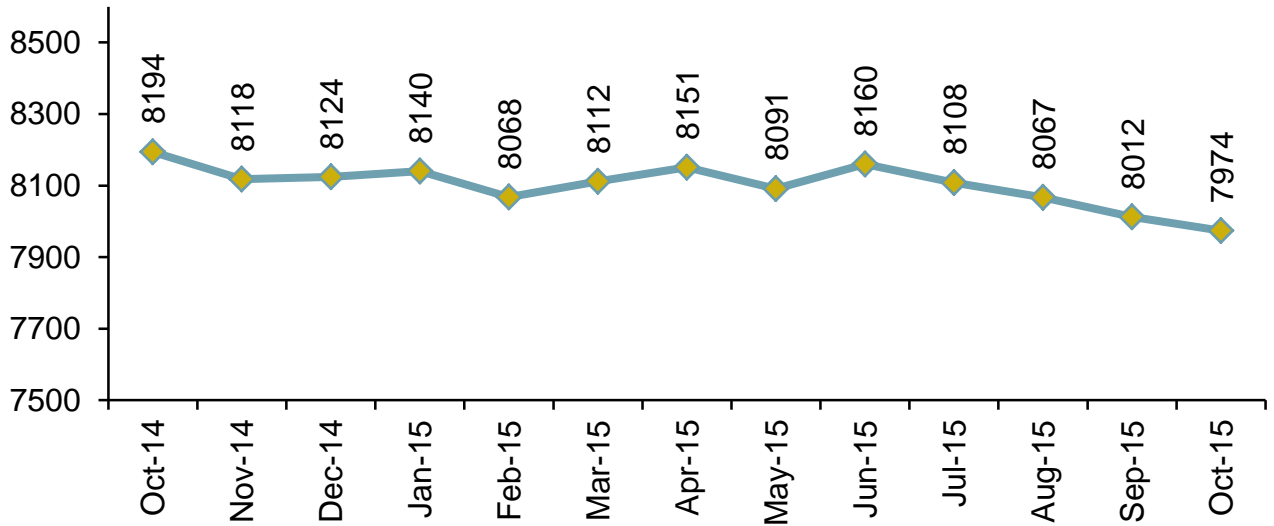
Incarcerated Offender Releases	Termer	Rider	Parole Violator	Total
To Parole	178	0	55	233
To Probation	2	187	0	189
To Retained Jurisdiction (Rider)	2	0	0	2
To Term Incarceration	0	25	38	63
To Other Status	0	0	1	1
Discharged	34	0	1	35
<b>Total</b>	<b>216</b>	<b>212</b>	<b>95</b>	<b>523</b>

Net Admissions/Releases	Termer	Rider	Parole Violator	Total
<b>Net Admissions/Releases</b>	<b>-58</b>	<b>-15</b>	<b>23</b>	<b>-50</b>
Ending Count	6333	1091	538	7962
Offenders in Transition*	26	26	-40	12
<b>Net Ending Count as of November 1, 2015</b>	<b>6359</b>	<b>1117</b>	<b>498</b>	<b>7974</b>

\*Offenders in Transition is an inherent "lag time" in offender movement that may take a few days to be reflected in the data offender management system.

# 1.2 Monthly Population Change

Incarcerated Population



# 1.3 Distribution by Crime Group

Crime Group	Term	% Term	Rider	% Rider	Violator	% Violator	Total	% Total
Murder/ Man	451	7.1%	5	0.4%	8	1.6%	464	5.8%
Sex	1579	24.8%	70	6.3%	52	10.4%	1701	21.3%
Assault	1679	26.4%	239	21.4%	161	32.3%	2079	26.1%
Property	1315	20.7%	307	27.5%	146	29.3%	1768	22.2%
Alcohol	254	4.0%	87	7.8%	23	4.6%	364	4.6%
Drug	1077	16.9%	402	36.0%	108	21.7%	1587	19.9%
Pending*	4	0.1%	7	0.6%	0	0.0%	11	0.1%
<b>Total</b>	<b>6359</b>	<b>100%</b>	<b>1117</b>	<b>100%</b>	<b>498</b>	<b>100%</b>	<b>7974</b>	<b>100%</b>
Percentage	79.7%		14.0%		6.2%		100%	

\*Pending count reflects the incarcerated offenders waiting to be adjudicated for a new crime or the data has not yet been updated in the data management system.

# 1.4 Distribution by Institution and Legal Status

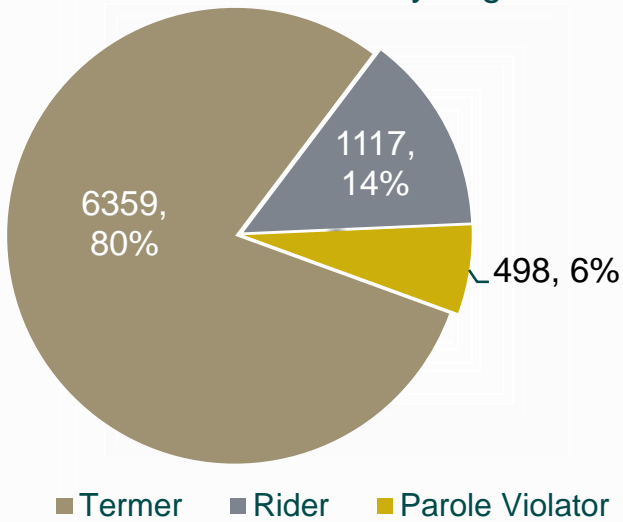
Institutions	Term	Rider	Violator	Total	% Total
<b>IMSI (Male Offenders):</b> Idaho Maximum Security Institution	427	0	3	430	5.4%
<b>ISCI (Male Offenders):</b> Idaho State Correctional Institution	1244	112	95	1451	18.2%
<b>SICI (Male Offenders):</b> South Idaho Correctional Institution	557	0	0	557	7.0%
<b>ICIO (Male Offenders):</b> Idaho Correctional Institution – Orofino	557	18	0	575	7.2%
<b>NICI (Male Offenders):</b> North Idaho Correctional Institution	0	399	0	399	5.0%
<b>SAWC (Male Offenders):</b> St. Anthony Work Camp	238	0	0	238	3.0%
<b>ISCC (Male Offenders):</b> Idaho State Correctional Center	1996	0	108	2104	26.4%
<b>SBWCC (Female Offenders):</b> South Boise Women’s Correctional Center	91	172	21	284	3.6%
<b>CAPP (Contract - Male Offenders):</b> Correctional Alternative Placement Program	36	240	53	329	4.1%
<b>PRC-SICI (Female Riders):</b> Pre-Release Center	23	74	0	97	1.2%
<b>PRCC (Female Offenders):</b> Pocatello Women’s Correctional Center	257	29	16	302	3.8%
Reentry Centers	Term	Rider	Violator	Total	% Total
<b>CRC Nampa (Male Offenders):</b> Community Reentry Center	85	0	0	85	1.1%
<b>CRC Idaho Falls (Male Offenders):</b> Community Reentry Center	84	0	0	84	1.1%
<b>CRC Treasure Valley (Male Offenders):</b> Community Reentry Center	100	0	0	100	1.3%
<b>CRC East Boise (Female Offenders):</b> Community Reentry Center	99	0	0	99	1.2%

Contract Beds	Term	Rider	Violator	Total	% Total
<b>Kit Carson</b> (Contract - Male Offenders): Kit Carson Contract Beds	208	0	0	208	2.6%
<b>Bonneville Contract</b> (Contract – County Jail): Bonneville Contract Beds	75	0	1	76	1.0%

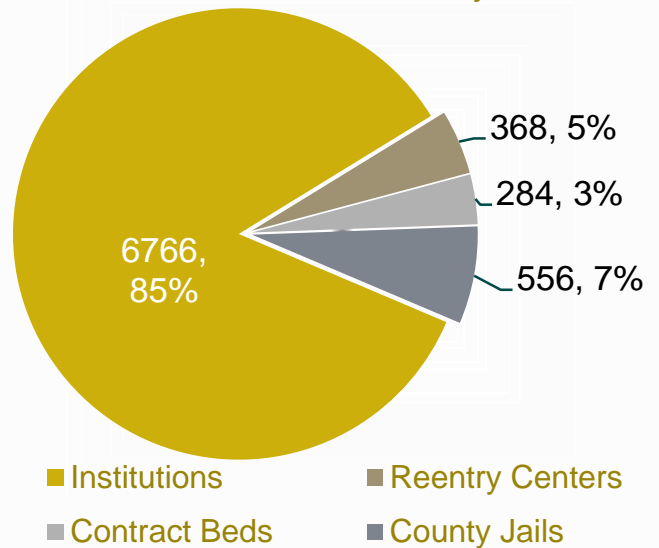
County Jails	Term	Rider	Violator	Total	% Total
<b>County Jails</b>	282	73	201	556	7.0%

Total Distribution By Institution and Legal Status	Term	Rider	Violator	Total	% Total
<b>Total</b> (By Institution & Legal Status): Institutions + Contract Beds + Reentry Centers + County Jails	6359	1117	498	7974	100%

Incarcerated Population  
by Legal Status



Incarcerated Population  
by Institution



# 1.5 Distribution by Demographics

Age Range	Term	% Term	Rider	% Rider	Violator	% Violator	Total	% Total
Under 18	0	0.0%	1	0.1%	0	0.0%	1	0.0%
Ages 18-24	675	10.6%	304	27.2%	27	5.4%	1006	12.6%
Ages 25-34	2084	32.8%	422	37.8%	232	46.6%	2738	34.3%
Ages 35-44	1650	25.9%	243	21.8%	136	27.3%	2029	25.4%
Ages 45-54	1187	18.7%	109	9.8%	81	16.3%	1377	17.3%
Ages 55-64	572	9.0%	35	3.1%	20	4.0%	627	7.9%
Ages 65+	191	3.0%	3	0.3%	2	0.4%	196	2.5%
<b>Total</b>	<b>6359</b>	<b>100%</b>	<b>1117</b>	<b>100%</b>	<b>498</b>	<b>100%</b>	<b>7974</b>	<b>100%</b>

Ethnicity	Term	% Term	Rider	% Rider	Violator	% Violator	Total	% Total
Asian	27	0.4%	1	0.1%	5	1.0%	33	0.4%
Black	178	2.8%	21	1.9%	17	3.4%	216	2.7%
Hispanic	996	15.7%	137	12.3%	69	13.9%	1202	15.1%
Indian	240	3.8%	39	3.5%	17	3.4%	296	3.7%
Other	64	1.0%	10	0.9%	4	0.8%	78	1.0%
Unknown	90	1.4%	41	3.7%	0	0.0%	131	1.6%
White	4764	74.9%	868	77.7%	386	77.5%	6018	75.5%
<b>Total</b>	<b>6359</b>	<b>100%</b>	<b>1117</b>	<b>100%</b>	<b>498</b>	<b>100%</b>	<b>7974</b>	<b>100%</b>

Gender	Term	% Term	Rider	% Rider	Violator	% Violator	Total	% Total
Females	636	10.0%	304	27.2%	71	14.3%	1011	12.7%
Males	5723	90.0%	813	72.8%	427	85.7%	6963	87.3%
<b>Total</b>	<b>6359</b>	<b>100%</b>	<b>1117</b>	<b>100%</b>	<b>498</b>	<b>100%</b>	<b>7974</b>	<b>100%</b>

# SECTION 2: COMMUNITY OVERVIEW

## 2.1 Admissions and Releases

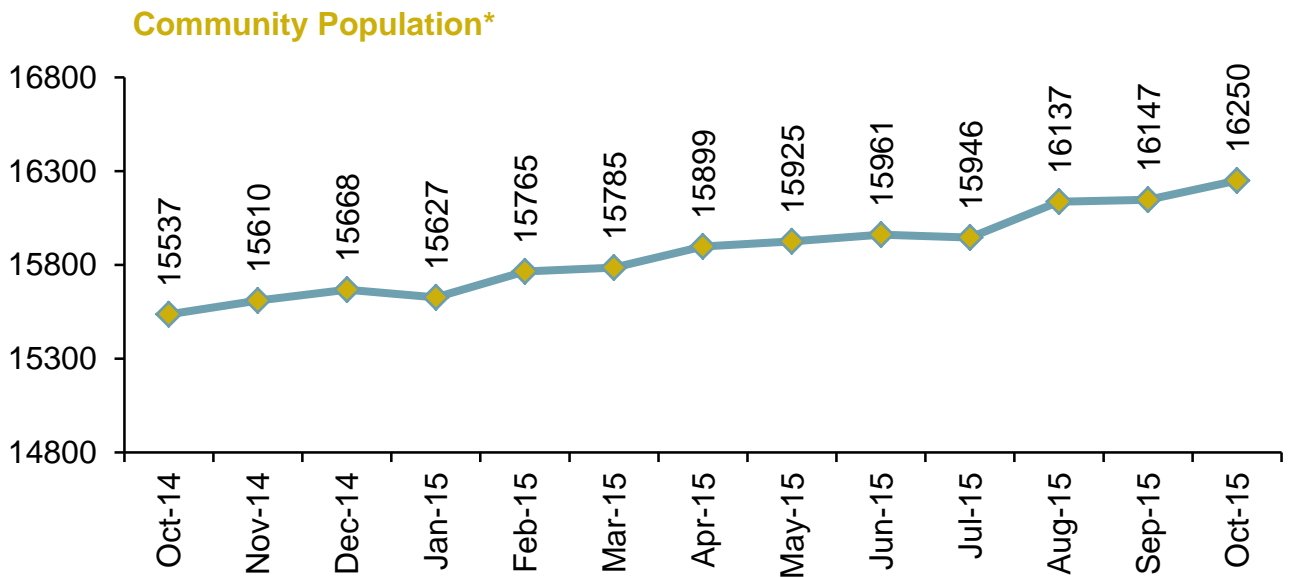
Community Offender Admissions	Parole	Probation	Total
<b>Beginning Count as of October 1, 2015</b>	<b>3568</b>	<b>10784</b>	<b>14352</b>
New Commitments	1	261	262
Successful Rider	0	187	187
Paroled (New)	178	0	178
Reinstated Parole	55	0	55
From Other Status	0	8	8
<b>Total</b>	<b>234</b>	<b>456</b>	<b>690</b>
Community Offender Releases	Parole	Probation	Total
To Probation or Parole	1	5	6
To Parole Violator	118	0	118
To Retained Jurisdiction (Rider)	0	100	100
To Term Incarceration	0	57	57
Discharged	45	204	249
<b>Total</b>	<b>164</b>	<b>366</b>	<b>530</b>
Net Admissions/Releases	Parole	Probation	Total
<b>Net Admissions/Releases</b>	70	90	160
Gross Ending District Count	3638	10874	14512
Offenders in Transition*	-28	-57	-85
<b>Net Ending District Count</b>	3610	10817	14427
Interstate Compact **	581	1242	1823
<b>Net Ending Count as of November 1, 2015</b> (including Interstate Compact)	<b>4191</b>	<b>12059</b>	<b>16250</b>

\*Offenders in Transition is an inherent "lag time" in offender movement that may take a few days to be reflected in the data offender management system.

\*\*Interstate Compact represents Idaho probationers and parolees who are completing their sentence in another state, but are monitored by Idaho.



## 2.2 Monthly Population Change



## 2.3 Distribution by Crime Group

Crime Group	Probation	% Probation	Parole	% Parole	Total	% Total
Murder/ Man	45	0.4%	137	3.3%	182	1.1%
Sex	673	5.6%	680	16.2%	1353	8.3%
Assault	2108	17.5%	1027	24.5%	3135	19.3%
Property	3430	28.4%	1107	26.4%	4537	27.9%
Alcohol	1744	14.5%	291	6.9%	2035	12.5%
Drug	3901	32.3%	948	22.6%	4849	29.8%
Pending**	158	1.3%	1	0.0%	159	1.0%
<b>Total</b>	<b>12059</b>	<b>100%</b>	<b>4191</b>	<b>100%</b>	<b>16250</b>	<b>100%</b>
Percentage	74.2%		25.8%		100%	

\*Monthly Community Population Change reflects the ending caseload including Interstate Compact offenders.

\*\*Pending Count reflects the community offenders that have not yet been adjudicated or the data has not yet been updated in the data management system.

## 2.4 Distribution by District and Legal Status

District/Legal Status	Probation	% Probation	Parole	% Parole	Total	% Total
<b>District 0:</b> Limited Supervision Unit	918	7.6%	320	7.6%	1238	7.6%
<b>District 1:</b> Coeur d'Alene	1698	14.1%	254	6.1%	1952	12.0%
<b>District 2:</b> Lewiston	533	4.4%	97	2.3%	630	3.9%
<b>District 3:</b> Caldwell	2005	16.6%	598	14.3%	2603	16.0%
<b>District 4:</b> Boise	2576	21.4%	1399	33.4%	3975	24.5%
<b>District 5:</b> Twin Falls	1310	10.9%	429	10.2%	1739	10.7%
<b>District 6:</b> Pocatello	722	6.0%	180	4.3%	902	5.6%
<b>District 7:</b> Idaho Falls	1055	8.7%	333	7.9%	1388	8.5%
+ Interstate Compact	1242	10.3%	581	13.9%	1823	11.2%
<b>Total</b>	<b>12059</b>	<b>100%</b>	<b>4191</b>	<b>100%</b>	<b>16250</b>	<b>100%</b>

## 2.5 Distribution by Demographics

Age Distribution	Probation	% Probation	Parole	% Parole	Total	% Total
Under 18	2	0.0%	0	0.0%	2	0.0%
Ages 18-24	1933	16.0%	150	3.6%	2083	12.8%
Ages 25-34	4341	36.0%	1334	31.8%	5675	34.9%
Ages 35-44	2950	24.5%	1204	28.7%	4154	25.6%
Ages 45-54	1844	15.3%	940	22.4%	2784	17.1%
Ages 55-64	808	6.7%	451	10.8%	1259	7.7%
Ages 65+	181	1.5%	112	2.7%	293	1.8%
<b>Total</b>	<b>12059</b>	<b>100%</b>	<b>4191</b>	<b>100%</b>	<b>16250</b>	<b>100%</b>

<b>Ethnicity Distribution</b>	<b>Probation</b>	<b>% Probation</b>	<b>Parole</b>	<b>% Parole</b>	<b>Total</b>	<b>% Total</b>
Asian	68	0.6%	34	0.8%	102	0.6%
Black	217	1.8%	134	3.2%	351	2.2%
Hispanic	1297	10.8%	508	12.1%	1805	11.1%
Indian	275	2.3%	110	2.6%	385	2.4%
Other	91	0.8%	34	0.8%	125	0.8%
Unknown	1215	10.1%	72	1.7%	1287	7.9%
White	8896	73.8%	3299	78.7%	12195	75.0%
<b>Total</b>	<b>12059</b>	<b>100%</b>	<b>4191</b>	<b>100%</b>	<b>16250</b>	<b>100%</b>

<b>Gender Distribution</b>	<b>Probation</b>	<b>% Probation</b>	<b>Parole</b>	<b>% Parole</b>	<b>Total</b>	<b>% Total</b>
Females	3359	27.9%	667	15.9%	4026	24.8%
Males	8700	72.1%	3524	84.1%	12224	75.2%
<b>Total</b>	<b>12059</b>	<b>100%</b>	<b>4191</b>	<b>100%</b>	<b>16250</b>	<b>100%</b>

## 3.1 Glossary

**1.Admission:** An offender who has been committed by the courts to the Idaho Department of Correction. The offender may enter the department's jurisdiction in Probation, Rider, or Term Status. A subsequent change from Probation or Rider to Term is also typically referred to as an admission to Term.

**2.Civil Commitment:** A form of confinement for offenders who are mentally ill, incompetent, alcohol or drug addicted, as contrasted with the criminal commitment for their sentence. Since they represent a per diem obligation to the Idaho Department of Correction, they are grouped with Term offenders.

**3.Discharged Offender:** Offenders whose court commitment is satisfied or who die while under the jurisdiction of the Idaho Department of Correction. Offenders may be discharged from Parole, Probation, Rider, Term or Parole Violator status.

**4.Incarcerated:** Offenders whose court commitment is satisfied or who die while under the jurisdiction of the Idaho Department of Correction. Offenders may be discharged from Parole, Probation, Rider, Term or Parole Violator status.

**5.New Commitment:** An offender who has been committed by the courts to the Idaho Department of Correction for the first time or after satisfying a previous court commitment has been committed for a new crime. They may enter a Probation, Rider, or Term status.

**6.Non-Idaho Offender:** An offender who is sentenced by a jurisdiction other than Idaho, but is housed by the Idaho Department of Correction for security reasons. Since they represent a per diem obligation to the Idaho Department of Correction, they are grouped with Term offenders.

**7.Parole Violator:** An offender who has been placed on parole and then violates the conditions of their parole. Parole Violator status is usually temporary status until a hearing can be conducted to determine if the offender will be returned to Term or Parole status.

**8.Paroled Offender:** An offender that the parole commission has decided to place in society after serving a portion of their sentence. They are supervised by a Parole Officer for the remainder of their court commitment. The offender's status is changed from Term to Parole.

**9.Probation:** An offender that the courts have decided to allow to service their sentence while living in society. They are not incarcerated, but are supervised by a Probation Officer until their court commitment is satisfied.

**10.Reinstated Parole:** An offender who violated their parole and the Parole Commission subsequently decided to reinstate them in Parole status instead of returning them to prison.

**11.Revoked Parole:** An offender who, while on parole, violates the conditions of their parole and is placed back in prison by the Parole Commission. Their status changes back to Term.

**12.Revoked Probation:** An offender who, while serving probation, violates the conditions of their probation and the court changes their sentence to incarceration. The offender's status changes from Probation to Term, or sometimes Rider.

**13.Retained Jurisdiction/Rider Incarcerated (Rider):** An offender committed to an Idaho Department of Correction Rider program. The courts will retain jurisdiction of this offender until the completion of the Rider program. The courts will subsequently determine whether to place this offender on Probation or Term status or to withhold judgment.

**14.Term:** An offender who the courts or the Parole Commission has committed to one of the state prisons.

## Questions?

Vicky Calderón, Principal Research Analyst

Idaho Department of Correction

Evaluation and Compliance: Research and Analysis

P: 208.658.2147 E: [mcaldero@idoc.idaho.gov](mailto:mcaldero@idoc.idaho.gov)

