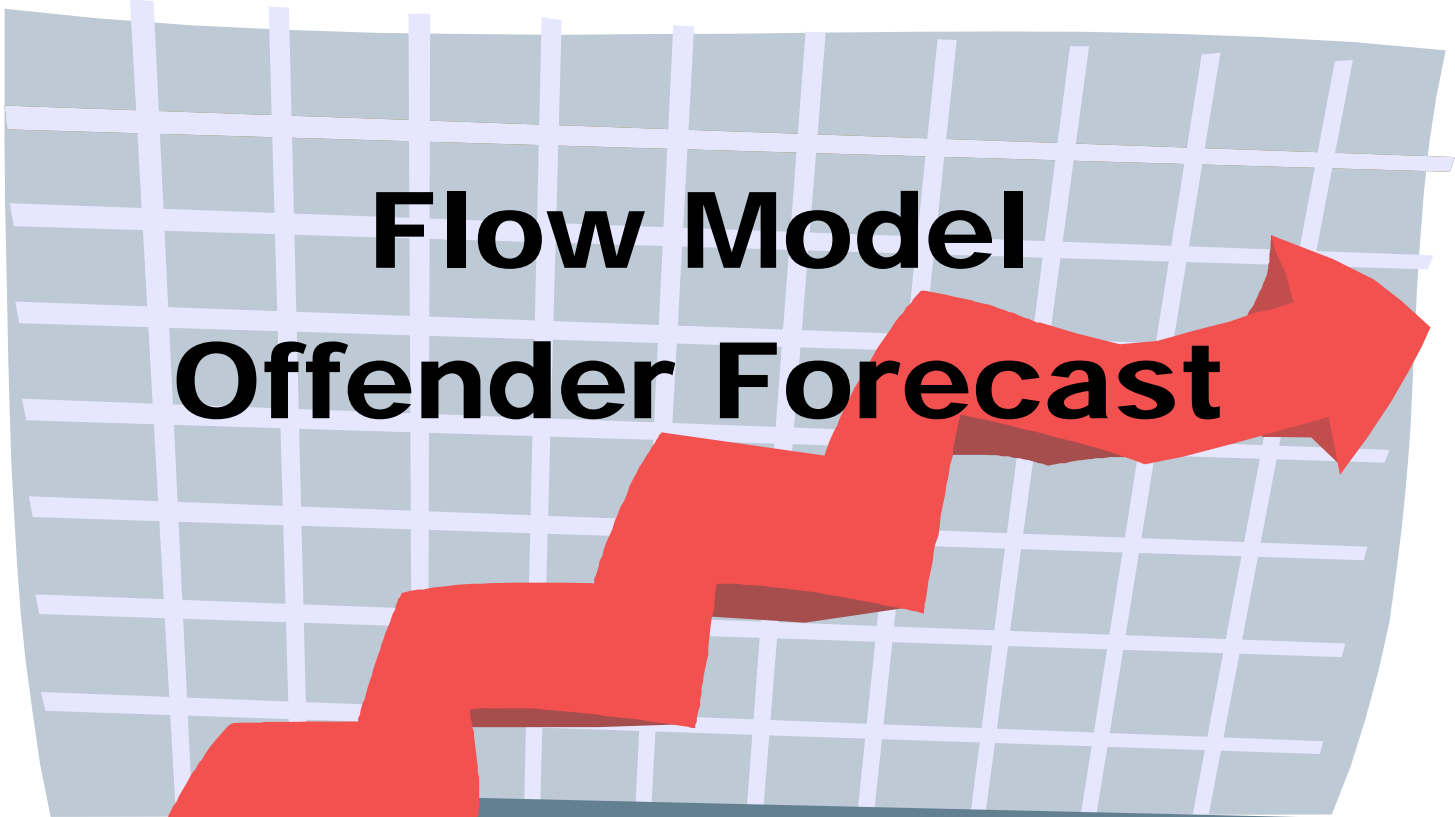


**State of Idaho  
Department of Correction**



**Flow Model  
Offender Forecast**

Idaho Offender Population Forecast FY 2011 through 2014  
August 31, 2010

## Table of Contents

<b>Executive Summary</b> .....	1
<b>Forecast Overview</b> .....	3
<b>Historical and Forecast Admissions and Releases by Status</b> .....	6
Term .....	6
Rider .....	6
Parole Violator .....	7
Total Incarcerated .....	7
Probation .....	7
Parole .....	8
Total Supervised .....	8
Total Incarcerated and Supervised .....	8
<b>Methods</b> .....	9
Idaho Criminal Justice Commission Population Forecast Advisory Committee .....	9
Purpose .....	9
Scope .....	9
Organization .....	9
Membership .....	9
Resources .....	10
Meeting Frequency .....	11
Forecast Preparation .....	11
Flow Model Description .....	11
Forecast Methods .....	11
Flow Model Concept .....	11
New Court Commitments .....	12
Cohorts .....	13
Flow Model Process .....	13
Method for Estimating New Court Commitments .....	13
Status Change Rates .....	14
Length of Stay Calculation .....	14
Completing the Forecast .....	15
Non-Bed and Non-Caseload Offenders .....	15
Tracking the Accuracy of the Forecast .....	15
Factors That Influence Forecast Accuracy .....	15
Appendix 1: Historical and Forecast Admissions and Releases for Males by Status, and Fiscal Year .....	17
Appendix 2: Historical and Forecast Admissions and Releases for Females by Status, and Fiscal Year .....	20
Appendix 3: Monthly Admissions and Releases by Status, FY 2010 .....	23

Appendix 4: Monthly Admissions and Releases by Status for Males, FY 2010 .....26  
Appendix 5: Monthly Admissions and Releases by Status for Females, FY 2010 .....29  
Appendix 6: State Population Estimates by Gender.....32  
Appendix 7: Court Commitment Rate Analysis .....33  
Appendix 8: Status Change Rate and Length of Stay Analysis.....36  
Appendix 9: Definitions .....38

# **Executive Summary**

## **Introduction**

A forecast was prepared for Idaho offenders for the period FY 2011 - 2014. The Idaho Criminal Justice Commission Population Forecast Advisory Committee (PFAC) established court commitment rates and status change rates with associated lengths of stay for the forecast. The forecast provides an estimate of the number of incarcerated and supervised offenders over the next four years.

## **Assumptions for Future Growth**

The forecast is influenced by two key factors: 1) offenders entering the system and 2) offenders leaving the system. The model relies on the judgment of the FAC members to set rates at which it is believed offenders will be committed to incarceration or supervision by the courts, and the rates for status changes and lengths of stay as offenders move through the system and are eventually discharged.

## **Conclusions**

The forecast anticipates moderated growth of incarcerated and supervised offenders over the next four years when compared to historical averages. The forecast number of incarcerated offenders and the forecast number of offenders actively supervised by Community Corrections are listed in the table below along with the anticipated annual percent increase from the previous fiscal year.

		2011	2012	2013	2014	
Incarcerated Offenders		7,800	8,133	8,500	8,849	
Annual Percent Increase		3.9%	4.3%	4.5%	4.1%	
Supervised Offenders		14,175	14,554	15,064	15,617	
Annual Percent Increase		2.0%	2.7%	3.5%	3.7%	
Total Offenders		21,975	22,687	23,564	24,466	
Annual Percent Increase		2.7%	3.2%	3.9%	3.8%	

The forecast anticipates a similar rate of increase for female offenders than for males. Historically, the number of incarcerated females had been increasing at almost twice the rate of increase for males, though that pattern ended abruptly in 2007. The incarcerated female offender population experienced no growth or declined for 2007 through 2009. The forecast anticipates that the female incarcerated offender group will experience an average annual increase of 4.4% from FY 2011 to 2014, while the male incarcerated offender group will have an average increase of 4.2%. Supervised offenders show a different pattern. The number of supervised female offenders will increase at an average rate of 4.8% while males will increase at 2.3%. Growth rates for both genders are down

from previous periods. The average annual rate of increase from FY 1996 through 2009 for incarcerated females was 10.2% while males increased at 5.7%.

## **Forecast Overview**

### **Introduction**

A forecast was made of Idaho offenders for the period FY 2011 - 2014. The Idaho Department of Correction (IDOC) developed the forecast based on guidance from the Forecast Advisory Committee (FAC), using the flow model method. The forecast provides an estimate of the number of incarcerated and supervised offenders for the next four years. The flow model method provides a detailed and useful forecast. It provides an improved ability to identify and quantify changes in growth patterns and attribute them to a specific component of offender management practices.

### **Method**

The flow model method (the model) was used to produce the offender population forecast. This method estimates admissions and releases for each status by crime group and gender. The FAC, a committee of subject matter experts from all areas of the criminal justice system, established the rates for new court commitments and the rates and lengths of stay for status changes leading to the eventual discharge of offenders. IDOC staff used these court commitment rates and status change rates, with their associated lengths of stay, to complete the forecast. A more complete description of this process is provided in the “Methods” section of this report.

### **Assumptions for Future Growth**

The forecast is influenced by two key factors: 1) offenders entering the system and 2) how long offenders stay before leaving the system. The model process relies on the judgment of FAC members to establish the rates at which it is believed offenders will be committed by the courts. A separate rate was established for each crime group, gender, and court commitment status. The model then anticipates when offenders will change status within the system or when they will be discharged based upon recent historical patterns of status change rates and lengths of stay selected by the FAC. Many factors that might influence future court commitment rates or status changes were considered and discussed while establishing the court commitment rate for each crime group and forecast year. The FAC considered changes in laws, changes in agency policy, changes in prosecution and court practices, and changes in state population trends when setting these rates and lengths of stay.

The FAC discussed each combination of crime group, commitment status, and gender, and searched for indications of changing court commitment trends. They noted a dramatic decline in court commitments to all gender, crime and status combinations beginning in FY 2008. This decline was attributed to a decline in reported crime in Idaho, which mirrored national trends. The flow model method compensates for this and as a result, forecast court commitments approximate the values seen in recent years.

## **Conclusions**

The model anticipates a moderate growth rate of incarcerated and supervised offenders over the next four years. The forecast indicates that the total number of incarcerated Idaho offenders will increase from 7,504 in FY 2010 to 7,800 in FY 2011, an increase of 3.9%. This number will increase to 8133 in FY 2012, an increase of 4.3%. It will increase to 8,500 in FY 2013, an increase of 4.5%. And in FY 2014, it will increase to 8,849, an increase of 4.1%. The annual rate of increase for the entire forecast period is substantially lower than the historical rate of increase of 5.5% from FY 1999 through FY 2010. The number of offenders actively supervised by Community Corrections is expected to increase from 13,902 in FY 2010 to 14,175 in FY 2011, an increase of 2.0%. This number will increase to 14,554 in FY 2012, an increase of 2.7%. It will increase to 15,064 in FY 2013, an increase of 3.5%. And in FY 2014 it will increase to 15,617 an increase of 3.7%. The annual rate of increase for supervised offenders during the forecast period is lower than the historical rate of increase of 5.6% from FY 1999 through FY 2010. The details of forecast growth can be seen in the table "Historical and Forecast Admissions and Releases by Status" on pages 5 through 7.

The information in this table contains some subtle patterns. A review of historical admission and release patterns reveals the existence of several relationships. For example, the decrease in admissions to Term in 1998 is followed by a decrease in releases two years later. This pattern is consistent with the fact that the average period of incarceration is about two and a half years. As a result we see that releases from term incarceration tend to lag admissions by about two years. The model behaves in just this manner. So the relatively high rates of admission to Term in 1999, 2000, and 2001 tend to distribute through the model as relatively high rates of Parole in 2002, 2003, and 2004, and subsequently higher Parole Violator rates in the following years. Additionally, we anticipate that the decline in admissions to prison in 2008 will be followed by a decline in parole releases in 2010 as seen on page 5.

Finally, the trend of higher rates of increase for female offenders that began in FY 1999 is dramatically moderated in the FY 2010 through FY 2013 forecast. To illustrate this point compare the percent increase of incarcerated female offenders to that of male offenders for the forecast period. Female incarcerated offenders are anticipated to experience an annual average increase of only 3.9% from FY 2010 through FY 2013, while male incarcerated offenders are anticipated to experience an annual average increase of 4.3%. Both of these percentages are reduced from previous years, but the tendency for female offenders to increase at a higher rate than male offenders was dramatically reversed beginning in 2007. The number of incarcerated females experienced no growth at all in FY 2007 and 2008 and actually declined in 2009. The forecast anticipates this pattern will perpetuate through the forecast period. More "by gender" details can be found in Appendices 1 and 2 beginning on page 16.

## **Limitations**

The flow model forecast was implemented to establish a credible and useful method for forecasting future admissions and subsequent status changes and discharges of felony offenders committed to the Idaho Department of Correction. The forecast reflects the court commitment rates and the subsequent status change rates and lengths of stay selected by the FAC. The FAC established the consensus method of selecting rates. The results fairly represent the opinions and judgments of FAC members who developed the model. There are three limitations that may have significant impacts on the forecast accuracy.

1) Forecast court commitments for new offenders are based on Idaho's population growth for persons between the ages of 20 and 34. The forecast uses U.S. Census Bureau estimates of population growth from 1995 to 2009 and their forecast for future years' growth. The Idaho population growth rate for the forecast period is 2.0% for both males and females. Admissions for new offenders into the model will be in error to the same degree that the Census forecast is in error.

2) The Idaho Department of Correction has 14 years of usable historical data. Virtually all components of the model rely upon the historical patterns of offender commitments and status changes. During the last 14 years there have been several significant changes in practices that make historical averages over the whole period poor indicators of the immediate future. Where policy decisions or other factors have caused a change from historical patterns the accuracy of the model may be diminished. Ironically this limitation is also one of the model's strengths. If a significant change from these historical patterns does occur, it is immediately evident. This strength can be illustrated by recent departmental undertakings. In FY 2008 IDOC became concerned about the high number of Probation revocations. The Community Corrections Division implemented a Violation Matrix method to guide Probation Officers in dealing with probationers at risk of revocation. The matrix offered a progression of intermediate sanctions in lieu of revocation. As a result of this effort, probation revocations were 115 less than anticipated in FY 2008 and 172 less than anticipated in 2009. This effort is estimated to have forestalled growth in the incarcerated offender population by 287 over a two year period. This example shows how changes from historic patterns of status change rates can significantly influence patterns of incarcerated offender population growth.

Historical data also help to establish bounds for reasonable forecast growth rates. With no significant changes in business practices we would expect the forecast to be close to the average of historical annual growth rates and to be bounded by observed minimum and maximum growth values. Additionally, if we are aware of changes in business practices, the difference between the forecast and actual experience may allow us to estimate the magnitude of these impacts as in the example above.

3) The forecast method relies heavily upon the judgment of FAC members. The forecast is the FAC's best estimate of future court commitments and releases of adult felony offenders. Every effort was made to ensure that the decisions and assumptions for the forecast were reasonable, but these judgments could prove inaccurate due to unforeseen conditions in the future. Additionally, new policies and programs are frequently implemented and their influence has obviously not been included in the forecast. Further, even when we are aware of new programs or policy changes, it is nearly impossible to estimate their impact on future years without historical data to guide us. Since the forecast is made up of the sum of a number of elements, no specific confidence level can be ascribed to the forecast. However, we can say that if current practices in the Criminal Justice System (law enforcement, prosecution, courts, Department of Correction, and the Parole Commission) continue, this forecast represents a reasonable estimate of future offender counts.



## Historical and Forecast Admissions and Releases by Status FY 1999 to 2014

	1999	2000	2001	2002	2003	2004	2005	2006	2007	2008	2009	2010	2011	2012	2013	2014	
Term	Actual	Actual	Actual	Actual	Actual	Actual	Actual	Actual	Actual	Actual	Actual	Actual	Forecast	Forecast	Forecast	Forecast	
Beginning	3,500	3,899	4,502	4,848	5,014	5,122	5,469	5,762	6,205	6,461	6,435	6,402	6,418	6,770	7,096	7,433	
<b>Admissions</b>																	
New Commitments	533	584	651	598	662	651	641	737	677	573	546	560	638	642	658	668	
Revoked Probation	516	586	581	593	628	728	788	803	802	723	571	636	679	679	742	739	
Revoked Parole	392	354	291	336	367	466	436	465	470	487	658	673	642	605	574	604	
Failed Rider	148	159	161	123	154	141	172	224	256	242	225	211	251	242	256	258	
<b>Total</b>	<b>1,589</b>	<b>1,683</b>	<b>1,684</b>	<b>1,650</b>	<b>1,811</b>	<b>1,986</b>	<b>2,037</b>	<b>2,229</b>	<b>2,205</b>	<b>2,025</b>	<b>2,000</b>	<b>2,080</b>	<b>2,210</b>	<b>2,168</b>	<b>2,230</b>	<b>2,269</b>	
<b>Releases</b>																	
Parole	800	704	905	935	1,116	1,051	1,104	1,180	1,330	1,429	1,448	1,459	1,315	1,347	1,412	1,427	
Discharged	390	376	433	549	587	588	640	606	619	622	585	605	543	495	481	512	
<b>Total</b>	<b>1,190</b>	<b>1,080</b>	<b>1,338</b>	<b>1,484</b>	<b>1,703</b>	<b>1,639</b>	<b>1,744</b>	<b>1,786</b>	<b>1,949</b>	<b>2,051</b>	<b>2,033</b>	<b>2,064</b>	<b>1,858</b>	<b>1,842</b>	<b>1,893</b>	<b>1,939</b>	
Net Admission & Releases	399	603	346	166	108	347	293	443	256	-26	-33	16	352	326	337	330	Historical
Ending	3,899	4,502	4,848	5,014	5,122	5,469	5,762	6,205	6,461	6,435	6,402	6,418	6,770	7,096	7,433	7,763	Average
Non Bed	167	170	164	159	165	163	172	183	181	163	164	155	175	183	192	201	Percent
Total Incarcerated	3,732	4,332	4,684	4,855	4,957	5,306	5,590	6,022	6,280	6,272	6,238	6,263	6,595	6,913	7,241	7,562	Increase*
Annual Percent Increase	11.8%	16.1%	8.1%	3.7%	2.1%	7.0%	5.4%	7.7%	4.3%	-0.1%	-0.5%	0.4%	5.3%	4.8%	4.7%	4.4%	6.7%
<b>Rider</b>																	
Beginning	582	612	583	659	781	783	1,003	894	867	961	820	809	989	978	1,014	1,041	
<b>Admissions</b>																	
New Commitments	697	695	745	767	807	927	916	1,041	996	920	913	957	1,011	1,028	1,049	1,068	
Failed Probation	498	500	549	577	598	830	786	901	870	860	775	941	974	932	1,011	1,008	
<b>Total</b>	<b>1,195</b>	<b>1,195</b>	<b>1,294</b>	<b>1,344</b>	<b>1,405</b>	<b>1,757</b>	<b>1,702</b>	<b>1,942</b>	<b>1,866</b>	<b>1,780</b>	<b>1,688</b>	<b>1,898</b>	<b>1,985</b>	<b>1,960</b>	<b>2,060</b>	<b>2,076</b>	
<b>Releases</b>																	
Probation	1,017	1,065	1,061	1,093	1,249	1,392	1,640	1,745	1,516	1,679	1,474	1,507	1,745	1,682	1,777	1,803	
Term	148	159	157	129	154	145	171	224	256	242	225	211	251	242	256	258	
<b>Total</b>	<b>1,165</b>	<b>1,224</b>	<b>1,218</b>	<b>1,222</b>	<b>1,403</b>	<b>1,537</b>	<b>1,811</b>	<b>1,969</b>	<b>1,772</b>	<b>1,921</b>	<b>1,699</b>	<b>1,718</b>	<b>1,996</b>	<b>1,924</b>	<b>2,033</b>	<b>2,061</b>	
Net Admission & Releases	30	-29	76	122	2	220	-109	-27	94	-141	-11	180	-11	36	27	15	Historical
Ending	612	583	659	781	783	1,003	894	867	961	820	809	989	978	1,014	1,041	1,056	Average
Non Bed	96	64	84	91	103	177	159	135	123	133	110	118	133	139	142	145	Percent
Total Incarcerated	516	519	575	690	680	826	735	732	838	687	699	871	845	875	899	911	Increase*
Annual Percent Increase	2.4%	0.6%	10.8%	20.0%	-1.4%	21.5%	-11.0%	-0.4%	14.5%	-18.0%	1.7%	24.6%	-3.0%	3.6%	2.7%	1.3%	3.1%

Historical Average Percent Increase covers the period 1996 through 2010

## Historical and Forecast Admissions and Releases by Status FY 1999 to 2014

	1999	2000	2001	2002	2003	2004	2005	2006	2007	2008	2009	2010	2011	2012	2013	2014	
<b>Parole Violator</b>	Actual	Actual	Actual	Actual	Actual	Actual	Actual	Actual	Actual	Actual	Actual	Forecast	Forecast				
Beginning Admissions	424	417	394	401	466	369	350	381	377	398	562	525	558	554	531	554	
Releases																	
Parole	481	444	395	546	525	659	752	749	745	895	855	954	959	873	892	934	
Term	385	350	285	347	341	466	449	406	466	481	654	671	642	605	574	604	
Reinstated Parole	103	117	103	134	281	212	272	347	258	250	238	250	321	291	295	305	
<b>Total</b>	<b>488</b>	<b>467</b>	<b>388</b>	<b>481</b>	<b>622</b>	<b>678</b>	<b>721</b>	<b>753</b>	<b>724</b>	<b>731</b>	<b>892</b>	<b>921</b>	<b>963</b>	<b>896</b>	<b>869</b>	<b>909</b>	
Net Admission & Releases	-7	-23	7	65	-97	-19	31	-4	21	164	-37	33	-4	-23	23	25	
Ending	417	394	401	466	369	350	381	377	398	562	525	558	554	531	554	579	
Non Bed	243	243	208	209	181	170	180	155	159	183	179	188	194	186	194	203	
Total Incarcerated	174	151	193	257	188	180	201	222	239	379	346	370	360	345	360	376	
Annual Percent Increase	9%	-13%	28%	33%	-27%	-4%	12%	10%	8%	59%	-9%	7%	-3%	-4%	4%	4%	8.3%
<b>Total Incarcerated</b>	<b>4,928</b>	<b>5,479</b>	<b>5,908</b>	<b>6,261</b>	<b>6,274</b>	<b>6,822</b>	<b>7,037</b>	<b>7,449</b>	<b>7,820</b>	<b>7,817</b>	<b>7,736</b>	<b>7,965</b>	<b>8,302</b>	<b>8,641</b>	<b>9,028</b>	<b>9,398</b>	Historical
Non Bed	506	477	456	459	449	510	511	473	463	479	453	461	502	508	528	549	Average
<b>Total Beds Occupied</b>	<b>4,422</b>	<b>5,002</b>	<b>5,452</b>	<b>5,802</b>	<b>5,825</b>	<b>6,312</b>	<b>6,526</b>	<b>6,976</b>	<b>7,357</b>	<b>7,338</b>	<b>7,283</b>	<b>7,504</b>	<b>7,800</b>	<b>8,133</b>	<b>8,500</b>	<b>8,849</b>	Percent
Annual Percent Increase	10.6%	13.1%	9.0%	6.4%	0.4%	8.4%	3.4%	6.9%	5.5%	-0.3%	-0.7%	3.0%	3.9%	4.3%	4.5%	4.1%	Increase*
	422	580	450	350	23	487	214	450	381	-19	-55	221	296	333	367	349	5.7%
<b>Probation</b>																	
Beginning Admissions	7,693	7,771	7,821	8,165	8,939	10,022	10,855	11,872	12,741	13,118	13,552	13,793	13,740	13,933	14,192	14,561	
New Commitments	2,098	1,924	2,089	2,189	2,501	2,575	2,778	2,886	2,860	2,715	2,828	2,696	2,808	2,879	2,937	2,995	
Successful Rider	1,005	1,056	1,056	1,125	1,260	1,429	1,663	1,756	1,508	1,665	1,459	1,468	1,740	1,682	1,777	1,803	
<b>Total</b>	<b>3,103</b>	<b>2,980</b>	<b>3,145</b>	<b>3,314</b>	<b>3,761</b>	<b>4,004</b>	<b>4,441</b>	<b>4,642</b>	<b>4,368</b>	<b>4,380</b>	<b>4,287</b>	<b>4,164</b>	<b>4,548</b>	<b>4,561</b>	<b>4,714</b>	<b>4,798</b>	
Releases																	
Revoked Probation	516	586	583	594	628	728	789	806	801	724	571	635	679	679	742	739	
Sentenced to Rider	487	486	518	551	569	791	754	877	868	855	773	941	971	932	1,011	1,008	
Discharged	2,022	1,858	1,700	1,395	1,481	1,652	1,881	2,090	2,322	2,367	2,702	2,641	2,705	2,691	2,592	2,651	
<b>Total</b>	<b>3,025</b>	<b>2,930</b>	<b>2,801</b>	<b>2,540</b>	<b>2,678</b>	<b>3,171</b>	<b>3,424</b>	<b>3,773</b>	<b>3,991</b>	<b>3,946</b>	<b>4,046</b>	<b>4,217</b>	<b>4,355</b>	<b>4,302</b>	<b>4,345</b>	<b>4,398</b>	
Net Admission & Releases	78	50	344	774	1,083	833	1,017	869	377	434	241	-53	193	259	369	400	Historical
Ending	7,771	7,821	8,165	8,939	10,022	10,855	11,872	12,741	13,118	13,552	13,793	13,740	13,933	14,192	14,561	14,961	Average
Non Caseload	1,455	1,429	1,443	1,850	2,321	2,659	2,786	2,898	2,793	2,694	2,665	2,685	2,790	2,843	2,918	3,000	Percent
Probation Caseload	6,316	6,392	6,722	7,089	7,701	8,196	9,086	9,843	10,325	10,858	11,128	11,055	11,143	11,349	11,643	11,961	Increase*
Annual Percent Increase	-0.5%	1.2%	5.2%	5.5%	8.6%	6.4%	10.9%	8.3%	4.9%	5.2%	2.5%	-0.7%	0.8%	1.8%	2.6%	2.7%	5.3%

Historical Average Percent Increase covers the period 1996 through 2010

## Historical and Forecast Admissions and Releases by Status FY 1999 to 2014

	1999	2000	2001	2002	2003	2004	2005	2006	2007	2008	2009	2010	2011	2012	2013	2014	
<b>Parole</b>	Actual	Actual	Actual	Actual	Actual	Actual	Actual	Actual	Actual	Actual	Actual	Forecast	Forecast				
Beginning Admissions	1,256	1,337	1,366	1,624	1,857	2,182	2,332	2,418	2,568	2,953	3,263	3,420	3,792	3,976	4,202	4,485	
Paroled*	846	768	935	996	1,191	1,118	1,146	1,267	1,396	1,447	1,477	1,460	1,315	1,347	1,412	1,427	
Re-instated Violator	82	105	91	144	213	211	281	268	277	298	255	316	325	291	295	305	
<b>Total</b>	<b>928</b>	<b>873</b>	<b>1,026</b>	<b>1,140</b>	<b>1,404</b>	<b>1,329</b>	<b>1,427</b>	<b>1,535</b>	<b>1,673</b>	<b>1,745</b>	<b>1,732</b>	<b>1,776</b>	<b>1,640</b>	<b>1,638</b>	<b>1,707</b>	<b>1,732</b>	
<b>Releases</b>																	
Parole Violator	493	449	397	544	523	662	751	732	738	883	852	946	958	873	892	934	
Discharged	354	395	371	363	556	517	590	653	550	552	723	458	498	539	532	491	
<b>Total</b>	<b>847</b>	<b>844</b>	<b>768</b>	<b>907</b>	<b>1,079</b>	<b>1,179</b>	<b>1,341</b>	<b>1,385</b>	<b>1,288</b>	<b>1,435</b>	<b>1,575</b>	<b>1,404</b>	<b>1,456</b>	<b>1,412</b>	<b>1,424</b>	<b>1,425</b>	
<b>Net Admission &amp; Releases</b>	<b>81</b>	<b>29</b>	<b>258</b>	<b>233</b>	<b>325</b>	<b>150</b>	<b>86</b>	<b>150</b>	<b>385</b>	<b>310</b>	<b>157</b>	<b>372</b>	<b>184</b>	<b>226</b>	<b>283</b>	<b>307</b>	Historical
Ending	1,337	1,366	1,624	1,857	2,182	2,332	2,418	2,568	2,953	3,263	3,420	3,792	3,976	4,202	4,485	4,792	Average
Non Caseload	361	402	401	473	537	573	578	586	697	760	792	945	944	997	1,064	1,136	Percent
Parole Caseload	976	964	1,223	1,384	1,645	1,759	1,840	1,982	2,256	2,503	2,628	2,847	3,032	3,205	3,421	3,656	Increase
Annual Percent Increase	6.7%	-1.2%	26.9%	13.2%	18.9%	6.9%	4.6%	7.7%	13.8%	10.9%	5.0%	8.3%	6.5%	5.7%	6.7%	6.9%	11.4%
<b>Total Supervised</b>	<b>9,108</b>	<b>9,187</b>	<b>9,789</b>	<b>10,796</b>	<b>12,204</b>	<b>13,187</b>	<b>14,290</b>	<b>15,309</b>	<b>16,071</b>	<b>16,815</b>	<b>17,213</b>	<b>17,532</b>	<b>17,909</b>	<b>18,394</b>	<b>19,046</b>	<b>19,753</b>	
Non Caseload	1,816	1,831	1,844	2,323	2,858	3,232	3,364	3,484	3,490	3,454	3,457	3,630	3,734	3,840	3,982	4,136	
Supervised Caseload	7,292	7,356	7,945	8,473	9,346	9,955	10,926	11,825	12,581	13,361	13,756	13,902	14,175	14,554	15,064	15,617	
Annual Percent Increase	0.4%	0.9%	8.0%	6.6%	10.3%	6.5%	9.8%	8.2%	6.4%	6.2%	3.0%	1.1%	2.0%	2.7%	3.5%	3.7%	6.2%
<b>Total Incarcerated and Supervised</b>																	
Incarcerated & Supervised	14,036	14,666	15,697	17,057	18,478	20,009	21,327	22,758	23,891	24,632	24,949	25,497	26,211	27,035	28,074	29,151	
Non Bed/Caseload	2,322	2,308	2,300	2,782	3,307	3,742	3,875	3,957	3,953	3,933	3,910	4,091	4,236	4,348	4,510	4,685	
<b>Total Beds &amp; Caseload</b>	<b>11,714</b>	<b>12,358</b>	<b>13,397</b>	<b>14,275</b>	<b>15,171</b>	<b>16,267</b>	<b>17,452</b>	<b>18,801</b>	<b>19,938</b>	<b>20,699</b>	<b>21,039</b>	<b>21,406</b>	<b>21,975</b>	<b>22,687</b>	<b>23,564</b>	<b>24,466</b>	
Annual Percent Increase	4.0%	5.5%	8.4%	6.6%	6.3%	7.2%	7.3%	7.7%	6.0%	3.8%	1.6%	1.7%	2.7%	3.2%	3.9%	3.8%	6.0%

Paroled\* includes values for offenders Paroled plus those transferred into Idaho on Interstate Compact

Historical Average Percent Increase covers the period 1996 through 2010

## **Methods**

A description of flow model methods used to forecast the offender population is included in this section. This section covers the FAC, an Overview of the Flow Model, the Flow Model Process, and Completion of the Forecast.

### **Idaho Criminal Justice Commission Population Forecast Advisory Committee**

#### **Purpose**

The purpose of the Idaho Criminal Justice Commission Population Forecast Advisory Committee (PFAC) is to establish impartial and reasonable court commitment rates and status change rates with associated lengths of stay to be used in forecasting future offender populations. Committee involvement enhances the credibility, reliability, and usefulness of the forecast.

#### **Scope**

The FAC exercises oversight over all aspects of the forecast process. Its primary goal is to identify trends and policy changes that may impact admissions and oversee assumptions used to forecast offender population growth. The FAC meets to review historical patterns of supervision and incarceration and to establish the court commitment rates and status change rates with associated lengths of stay for the forecast period. The FAC does not consider construction or budgetary issues when preparing the forecast.

#### **Organization**

Mary Stohr, a professor from the Boise State University Department of Criminal Justice, served as chairperson for the FY 2011 forecast. The FAC reviewed historical data and staff recommendations and established court commitment rates, status change rates, and associated lengths of stay for the forecast. Decisions were made by consensus.

#### **FAC Membership**

Members of the Idaho Criminal Justice Commission form the core of the FAC and additional members are selected by the Chairman of the Idaho Criminal Justice Commission as the need arises. Consequently, the FAC benefits from the expertise of a wide spectrum of criminal justice system stakeholders. Members include representatives from a wide variety of organizations as well as at large members as indicated in the table below.

## Idaho Criminal Justice Commission Population Forecast Advisory Committee Members for the FY 2010 Forecast

### Committee Members

Amy Aaron\*  
Darrel Bolz\*  
Dick Burns\*  
Olivia Craven\*  
Ann Cronin\*  
Tim Fleming\*  
Justice Joel Horton\*  
Molly Huskey  
Mike Jorgenson\*  
Vaughn Killeen  
Brent Reinke\*, Chair  
Scott Ronan\*  
Leon Smith\*  
Dr. Mary Stohr\*  
Josh Tewalt  
Jim Tibbs\*  
Judge Ron Wilper\*

\* - attended July 28, 2010 FAC meeting

### Additional Attendees

Wes Greer  
Carrie Parrish  
Maureen Shea

### Organization

Idaho Sheriffs Association  
Idaho State Legislature, Joint Finance and Commerce Committee  
Idaho Legislative Services Offices  
Idaho Commission of Pardons and Parole  
Idaho State Police  
Canyon County Prosecutor's Office  
Idaho Supreme Court  
Idaho State Appellate Public Defender  
Idaho State Legislature  
Idaho Sheriffs Association  
Idaho Department of Correction  
Idaho Supreme Court  
Idaho State Legislature  
Boise State University  
Idaho Division of Financial Management  
Boise City Council  
Idaho District Court

### Organization

Idaho Commission of Pardons and Parole  
Idaho Office of Performance Evaluations  
Idaho Office of Performance Evaluations

### Resources

IDOC provides research staff to assemble the model used to forecast offender populations and monitor the forecast's performance. The staff performs analyses of offender information to identify historical patterns in court commitments, status changes, and lengths of stay. They also highlight recent changes within those patterns. They provide technical assistance necessary to complete and evaluate the offender forecast. IDOC also provides administrative support for conducting FAC business pertaining to offender forecasts.

## **Meetings**

The FAC met on July 28, 2010 to review the prior year forecast performance, select court commitment rates, select status change rates and lengths of stay and discuss policy impacts. The FAC set the forecast rates and lengths of stay at the meeting. The completed forecast was presented to FAC in September.

## **Forecast Preparation**

Based on the rates and lengths of stay set by the FAC, the staff prepares and revises the offender forecast each year. The forecast is made for four years beginning with the current fiscal year. A forecast period of four years was chosen because research indicates that the flow model process begins to function as a linear trend after that time. This happens because forecast court commitments are based Census Bureau population forecasts which are essentially linear and only a few status change lengths of stay exceed four years. As a result, the variations induced by historical actual commitment values tend to become smoothed into a linear pattern.

# **Flow Model Description**

## **Forecast Methods**

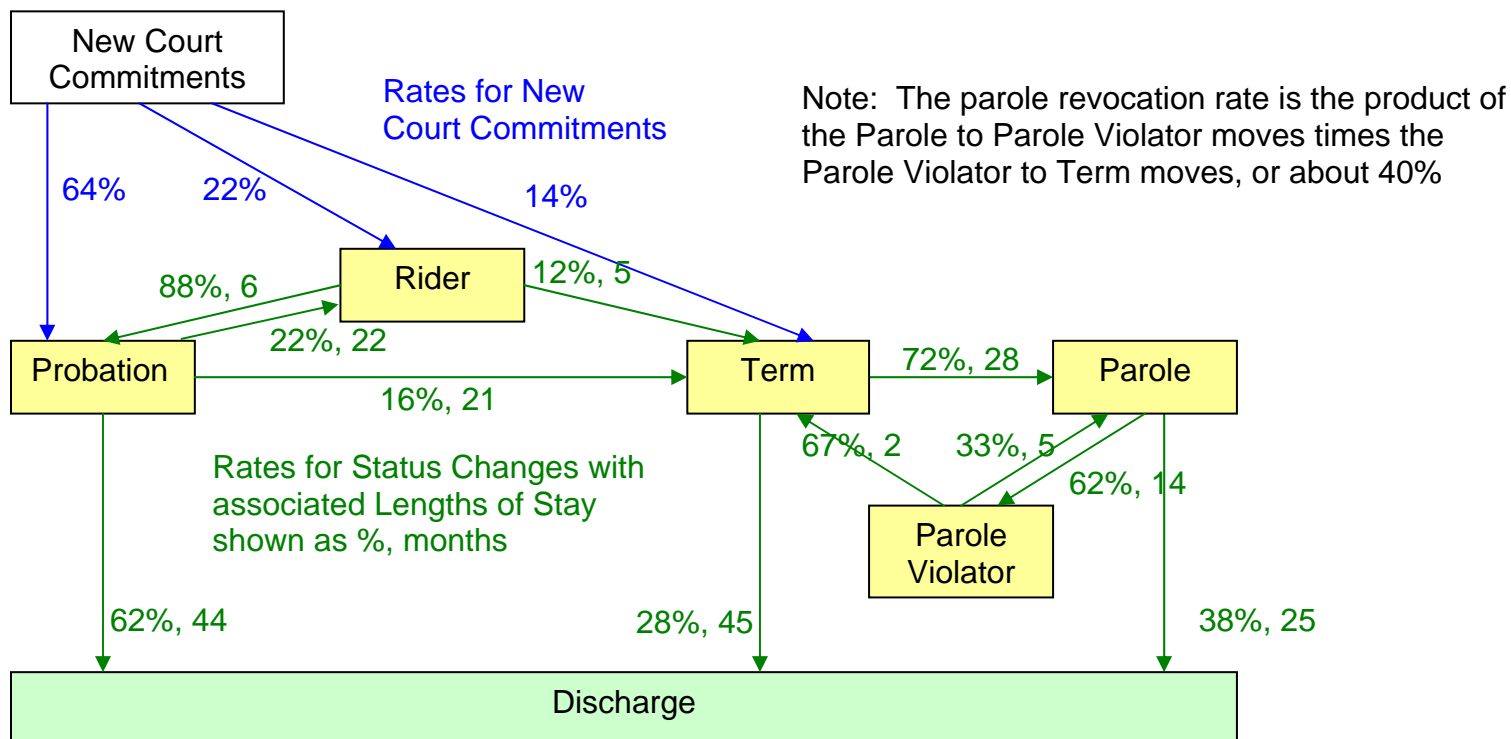
There are four methods commonly used in forecasting inmate population growth: mathematical, statistical, flow, and simulation. The mathematical model consists of averaging inmate growth over a given period of time and applying that average rate of growth to future periods. The statistical method uses trends to forecast future population based upon historical populations. The flow model and simulation models differ from the previous two methods by using both the number of offenders admitted and the number of offenders released (estimated using status change rates with associated lengths of stay) to forecast future populations. After reviewing the practices of several states of comparable size and proximity, IDOC staff determined that the most economical forecasting method would be the flow model. Some larger states utilize simulation models but that method was determined to be too costly.

## **Flow Model Concept**

The flow model concept employs historical and forecast admissions by status and then moves offenders admitted to each status through the IDOC system based on historical rates of status change and their associated lengths of stay. The process is illustrated in the chart below. The chart shows the portion of New Commitments that go to each status and the portion that moves from each status to another status or are discharged. The chart below shows the rates and lengths of stay in months used in the 2011 forecast.

## Flow of Offenders

Patterns of Court Commitments and Offender Flow through  
the Idaho Department of Correction



### New Court Commitments

IDOC jurisdiction over offenders begins with a felony conviction and a court commitment to Probation, Rider, or Term. The FAC uses historical court commitment data to establish the rate at which offenders will be committed to the custody or supervision of the IDOC with a new sentence. This rate is used to calculate the number of new court commitments that will occur annually by status, crime group, and gender. Rates of status movement and lengths of stay, set by FAC, are then used to estimate how many offenders will move to a new status and when they will move.

## **Cohorts**

Separate New Court Commitment forecasts are made for 12 different cohorts. Cohorts were established based on combinations of crime group and gender. All crimes are grouped into one of six crime groups: Alcohol, Assault, Drug, Murder and Manslaughter, Property, and Sex. Each crime group is separated by gender.

## **Flow Model Process**

### **Method for Estimating New Court Commitments**

Forecast court commitments are estimated based on historical court commitments and the Idaho state population. Historical commitment data were grouped by commitment status, crime group, gender, and fiscal year. The commitment status types used for the model were Probation, Rider, and Term. The data cover fiscal years 2001 through 2010. Population data for both the historical and forecast period were derived from U.S. Census Bureau data. The age group 20 to 34 was selected for forecast purposes because this age group made up the largest portion of commitments and was the most highly correlated with commitment data. This population, grouped by gender was used to forecast new court commitments. Details of population growth can be found in Appendix 6.

Having established the population groups for new court commitments, the next task was to determine the historic rate of commitment for each cohort. To do this, staff divided the yearly commitments for each cohort by the appropriate population group value for each year to obtain an annual rate.

The historical annual commitment rates give the FAC a starting point to select a rate to use in the forecast. Staff calculated commitment rates based on a graduated weighted average method. The graduated weighted average was computed by incrementing the weight for each year's value when calculating the average. So 2001 has a weight of 1, 2002 a weight of 2, 2003 a weight of 3, and so on. This technique was preferred over the simple average because it assigns the most weight to the most recent values. The members of FAC considered these rates but did not limit themselves exclusively to this option. The FAC examined historic patterns to identify trends or significant patterns of change. The FAC also examined each crime group for non-statistical influences such as the impact of changes in law, the expansion of drug courts, or the impact a declining economy might have on property crimes. The FAC considered all these potential influences and then agreed on a court commitment rate for future years for each cohort. This year, they selected rates somewhat greater than the graduated weighted average for male commitments to Probation for Alcohol crimes. They selected rates somewhat lower than the graduated weighted average for male and female commitments to Probation for Drug crimes. They selected rates lower than the GWA for male commitments to Rider for Alcohol crimes, and rates higher for male commitments to Rider for Property crimes. They selected rates somewhat lower than the graduated weighted average for male commitments to Term for Drug crimes. The graduated weighted average for the last 10 years' commitment rates was chosen for all other cohorts. Appendix 7 provides a chart illustrating male commitments to prison by year and crime and details for historical and forecast court commitment rates by crime group and gender, along with the FAC selected rate for each gender status combination.



After the court commitment rates were established, staff multiplied these rates by the population indicator group values for each forecast year to obtain future year commitments for each cohort. These values are incorporated into the model as “New Court Commitments” as indicated in the tables on pages 5 through 7.

### **Status Change Rates**

The model uses historical status change rates to calculate how many Probationers will discharge (or revoke), how many Riders will go to Probation (or fail the Rider program and go to Term), how many Term offenders will parole (or discharge), and how many paroled offenders will discharge (or revoke). Status change rates for the model are based on historical averages. For this year’s forecast the FAC chose to use Rider rates for FY 2008 through FY 2010, Probation rates for FY 2008 through FY 2010, Term rates for FY 2007 through FY 2010, Parole rates for FY 2007 through FY 2009, and Parole Violator rates for FY 2008 through FY 2010 to account for recognized changes in practices. Appendix 8 shows an illustration of the analysis used to select these periods.

### **Length of Stay Calculation**

Historical length of stay prior to status change data were grouped by status change type, gender, and fiscal year. The data covered fiscal years 2001 through 2010. The data were then used to develop a length of stay profile for each combination of status change type and gender. These profiles enable us to estimate how long it will take offenders to “flow” through the system. The FAC selected length of stay patterns based on recent historical averages. Periods used for length of stay are similar to those used for status change rates. For the 2008 forecast the FAC elected to use the Rider rates for FY 2008 through FY 2010, Probation rates for FY 2008 through FY 2010, Term rates for FY 2008 through FY 2010, Parole rates for FY 2007 through FY 2009, and Parole Violator rates for FY 2008 through FY 2010. Staff calculated length of stay profiles for the following status changes:

Probation to discharge,	Rider failures to Term,	Parole to Parole Violator,
Probation failures to Rider,	Term to discharge,	Parole Violator re-instated to Parole
Probation revocation to Term,	Term to Parole,	Parole Violator revocation to Term
Rider to Probation,	Parole to discharge	

The length of stay profile by gender and crime group was then applied to estimate anticipated status changes for each cohort to determine the number of offenders that would change from one status to another, and eventually discharge, by month. The flow model then sums these estimates from each old status and into each new status. For example, an offender may enter Term incarceration from a new court commitment, as a failed Rider, from a revoked Probation, or from a revoked Parole. The Term offender may go to Parole or be discharged. The chart on page 11 shows the court commitment and status change rates and associated lengths of stay used in the FY 2010 forecast.

The model estimates the flow of existing offenders and new court commitments through each status change to their eventual discharge. The rates described in the Status Change Rates section are used to determine how many will move from one status to another and the length of stay profiles are used to determine when these status moves will occur.

To calculate the number of offenders at the end of each forecast year the model starts with the existing population for each status, adds the new admissions from each contributing status change type and new court commitments, and then subtracts the releases for each month. The result of this arithmetic process is the forecast for the end of the year. The tables on pages 5 through 7 are organized in this manner. Finally, since the forecast was not completed until the middle of August, staff corrected for actual monthly values through July. The FY 2011 forecast includes actual values for July and forecast monthly values for the rest of the forecast period.

## **Completing the Forecast**

### **Non-Bed and Non-Caseload Offenders**

The model provides a forecast of offenders in Probation, Rider, Term, Parole, and Parole Violator status types. To complete the forecast, the number of offenders that will fall into Non-Bed or Non-Caseload categories is needed (definitions in Appendix 9). Non-Bed and Non-Caseload designations tend to change as a consequence of policy or programmatic decisions and can vary less predictably over time than other components of the model. This portion of the forecast is prepared separately based on historical patterns. These offenders are an important part of the completed model. The previously described portions of the model provide the total number of offenders by status. To complete the forecast, Non-Bed offenders are subtracted from the total incarcerated to determine how many will be under direct IDOC custody and Non-Caseload offenders are subtracted from the total supervised to determine how many will be directly supervised by Community Corrections. This gives the total number of beds required in Idaho prisons and the total caseload for Community Corrections. Policy decisions can dramatically impact Non-Bed and Non-Caseload numbers. Historic volatility in this data results in diminished confidence concerning what might happen with this Non-Caseload group. If the estimate for this group is too high the forecast for Probation will be too low, and vice versa.

### **Tracking the Accuracy of the Forecast**

The forecast performance will be monitored monthly. IDOC staff determine the variance between forecast population and actual population each month and distribute the findings to members of the FAC and other interested stakeholders. This method of monthly analysis allows early detection of changes in historical patterns.

### **Factors That Influence Forecast Accuracy**

Abrupt changes from historical patterns generally have adverse effects on forecast accuracy. In FY 2008 and 2009, the incarcerated offender population experienced three such incidents. The first was a dramatic decline in court commitments to all statuses. This decline was traced to a reduction in reported crime in Idaho. The second was a collaborative effort of IDOC and the courts to find community based alternatives to probation revocations. The final influence was the perpetuation of Parole Commission's accelerated paroles. Together, these three influences completely offset all anticipated growth in the incarcerated offender population. All of these influences appear to be permanent changes, each with an ongoing departure from previous historical patterns, so they have been incorporated into the forecast as the newly emergent pattern for their respective components of the forecast.

IDOC is recently implemented the Pathways offender programming scheme, intended to improve the efficiency of programming and education endeavors with the ultimate goal of paroling offenders sooner and reducing recidivism. The Legislature occasionally passes new laws that have substantial impacts on what crimes will result in imprisonment and/or how long offenders will be imprisoned. The new CAPP facility, along with new legislation creating a Rider TC program (along with other changes in Rider sentencing possibilities), is expected to affect the rate of Rider commitments. Other entities such as the courts and the Parole Commission also occasionally implement new methods to improve public safety. Finally, there may be other influences, not yet known to the FAC or Staff, which could affect some part of the correctional system process. Staff and FAC members will monitor admissions and releases for each status for identifiable changes from historical patterns with the expectation that new influences will be incorporated into future forecasts as a change in court commitment rates, status change rates, or lengths of stay.

## Appendix 1 Historical and Forecast Admissions and Releases by Status and Fiscal Year Male Offenders FY 1999 to 2014

Term	1999	2000	2001	2002	2003	2004	2005	2006	2007	2008	2009	2010	2011	2012	2013	2014	
	Actual	Actual	Actual	Actual	Actual	Actual	Actual	Actual	Actual	Actual	Actual	Actual	Forecast	Forecast			
<b>Beginning Admissions</b>	3,283	3,639	4,173	4,459	4,577	4,678	4,988	5,221	5,610	5,850	5,800	5,814	5,836	6,128	6,406	6,728	
New Commitments	496	544	581	536	606	588	573	678	623	523	498	513	581	586	599	609	
Revoked Probation	456	494	503	478	520	617	679	699	668	584	476	530	555	552	610	607	
Revoked Parole	358	327	259	310	332	413	359	395	416	430	599	620	577	550	523	542	
Failed Rider	129	143	139	106	128	122	147	169	220	212	199	177	215	206	220	222	
<b>Total</b>	<b>1,439</b>	<b>1,508</b>	<b>1,482</b>	<b>1,430</b>	<b>1,586</b>	<b>1,740</b>	<b>1,758</b>	<b>1,941</b>	<b>1,927</b>	<b>1,749</b>	<b>1,772</b>	<b>1,840</b>	<b>1,928</b>	<b>1,894</b>	<b>1,952</b>	<b>1,980</b>	
<b>Releases</b>																	
Parole	720	622	804	815	944	884	937	1,010	1,136	1,244	1,236	1,268	1,151	1,168	1,208	1,225	
Discharged	363	352	392	497	541	546	588	542	551	555	522	550	485	448	422	452	
<b>Total</b>	<b>1,083</b>	<b>974</b>	<b>1,196</b>	<b>1,312</b>	<b>1,485</b>	<b>1,430</b>	<b>1,525</b>	<b>1,552</b>	<b>1,687</b>	<b>1,799</b>	<b>1,758</b>	<b>1,818</b>	<b>1,636</b>	<b>1,616</b>	<b>1,630</b>	<b>1,677</b>	
<b>Net Admission &amp; Releases</b>	<b>356</b>	<b>534</b>	<b>286</b>	<b>118</b>	<b>101</b>	<b>310</b>	<b>233</b>	<b>389</b>	<b>240</b>	<b>-50</b>	<b>14</b>	<b>22</b>	<b>292</b>	<b>278</b>	<b>322</b>	<b>303</b>	Historical
<b>Ending</b>	<b>3,639</b>	<b>4,173</b>	<b>4,459</b>	<b>4,577</b>	<b>4,678</b>	<b>4,988</b>	<b>5,221</b>	<b>5,610</b>	<b>5,850</b>	<b>5,800</b>	<b>5,814</b>	<b>5,836</b>	<b>6,128</b>	<b>6,406</b>	<b>6,728</b>	<b>7,031</b>	Average
Non Bed	161	156	148	145	149	146	148	162	158	147	150	140	158	165	173	182	Percent
<b>Total Incarcerated</b>	<b>3,478</b>	<b>4,017</b>	<b>4,311</b>	<b>4,432</b>	<b>4,529</b>	<b>4,842</b>	<b>5,073</b>	<b>5,448</b>	<b>5,692</b>	<b>5,653</b>	<b>5,664</b>	<b>5,696</b>	<b>5,970</b>	<b>6,241</b>	<b>6,555</b>	<b>6,849</b>	Increase*
<b>Annual Percent Increase</b>	<b>11.2%</b>	<b>15.5%</b>	<b>7.3%</b>	<b>2.8%</b>	<b>2.2%</b>	<b>6.9%</b>	<b>4.8%</b>	<b>7.4%</b>	<b>4.5%</b>	<b>-0.7%</b>	<b>0.2%</b>	<b>0.6%</b>	<b>4.8%</b>	<b>4.5%</b>	<b>5.0%</b>	<b>4.5%</b>	<b>6.4%</b>
<b>Rider</b>																	
<b>Beginning Admissions</b>	483	500	463	517	609	602	770	675	629	751	645	626	782	785	814	834	
New Commitments	561	558	604	629	639	738	702	803	803	763	738	775	825	835	851	867	
Failed Probation	383	385	424	428	461	637	611	663	669	666	612	731	779	751	818	816	
<b>Total</b>	<b>944</b>	<b>943</b>	<b>1,028</b>	<b>1,057</b>	<b>1,100</b>	<b>1,375</b>	<b>1,313</b>	<b>1,466</b>	<b>1,472</b>	<b>1,429</b>	<b>1,350</b>	<b>1,506</b>	<b>1,604</b>	<b>1,586</b>	<b>1,669</b>	<b>1,683</b>	
<b>Releases</b>																	
Probation Term	798	837	839	853	979	1,082	1,293	1,343	1,130	1,322	1,170	1,173	1,386	1,351	1,429	1,452	
Failed Probation	129	143	135	112	128	125	115	169	220	213	199	177	215	206	220	222	
<b>Total</b>	<b>927</b>	<b>980</b>	<b>974</b>	<b>965</b>	<b>1,107</b>	<b>1,207</b>	<b>1,408</b>	<b>1,512</b>	<b>1,350</b>	<b>1,535</b>	<b>1,369</b>	<b>1,350</b>	<b>1,601</b>	<b>1,557</b>	<b>1,649</b>	<b>1,674</b>	
<b>Net Admission &amp; Releases</b>	<b>17</b>	<b>-37</b>	<b>54</b>	<b>92</b>	<b>-7</b>	<b>168</b>	<b>-95</b>	<b>-46</b>	<b>122</b>	<b>-106</b>	<b>-19</b>	<b>156</b>	<b>3</b>	<b>29</b>	<b>20</b>	<b>9</b>	Historical
<b>Ending</b>	<b>500</b>	<b>463</b>	<b>517</b>	<b>609</b>	<b>602</b>	<b>770</b>	<b>675</b>	<b>629</b>	<b>751</b>	<b>645</b>	<b>626</b>	<b>782</b>	<b>785</b>	<b>814</b>	<b>834</b>	<b>843</b>	Average
Non Bed	85	54	72	76	90	149	126	99	100	115	101	96	113	119	121	123	Percent
<b>Total Incarcerated</b>	<b>415</b>	<b>409</b>	<b>445</b>	<b>533</b>	<b>512</b>	<b>621</b>	<b>549</b>	<b>530</b>	<b>651</b>	<b>530</b>	<b>525</b>	<b>686</b>	<b>672</b>	<b>695</b>	<b>713</b>	<b>720</b>	Increase*
<b>Annual Percent Increase</b>	<b>1.2%</b>	<b>-1.4%</b>	<b>8.8%</b>	<b>19.8%</b>	<b>-3.9%</b>	<b>21.3%</b>	<b>-11.6%</b>	<b>-3.5%</b>	<b>22.8%</b>	<b>-18.6%</b>	<b>-0.9%</b>	<b>30.7%</b>	<b>-2.0%</b>	<b>3.4%</b>	<b>2.6%</b>	<b>1.0%</b>	<b>2.6%</b>

Historical Average Percent Increase covers the period 1996 through 2010

## Male Offenders FY 1999 to 2014

	1999	2000	2001	2002	2003	2004	2005	2006	2007	2008	2009	2010	2011	2012	2013	2014	
<b>Parole Violator</b>	Actual	Actual	Actual	Actual	Actual	Actual	Actual	Actual	Actual	Actual	Actual	Actual	Forecast	Forecast			
Beginning	402	399	369	384	438	336	310	335	335	362	522	480	502	511	488	512	
Admissions																	
Parole	449	398	363	498	465	575	661	646	674	816	768	856	880	794	818	845	
Releases																	
Term	353	323	253	321	306	413	397	336	412	424	595	618	577	550	523	542	
Reinstated Parole	99	105	95	123	261	188	239	310	235	232	215	216	294	267	271	281	
<b>Total</b>	<b>452</b>	<b>428</b>	<b>348</b>	<b>444</b>	<b>567</b>	<b>601</b>	<b>636</b>	<b>646</b>	<b>647</b>	<b>656</b>	<b>810</b>	<b>834</b>	<b>871</b>	<b>817</b>	<b>794</b>	<b>823</b>	
Net Admission & Releases	-3	-30	15	54	-102	-26	25	0	27	160	-42	22	9	-23	24	22	
Ending	399	369	384	438	336	310	335	335	362	522	480	502	511	488	512	534	
Non Bed	232	228	199	199	162	150	159	135	146	166	160	163	177	169	177	185	
Total Incarcerated	167	141	185	239	174	160	176	200	216	356	320	339	334	319	335	349	
Annual Percent Increase	11.3%	-15.6%	31.2%	29.2%	-27.2%	-8.0%	10.0%	13.6%	8.0%	64.8%	-10.1%	5.9%	-1.5%	-4.5%	5.0%	4.2%	8.5%
<b>Total Incarcerated</b>	<b>4,538</b>	<b>5,005</b>	<b>5,360</b>	<b>5,624</b>	<b>5,616</b>	<b>6,068</b>	<b>6,231</b>	<b>6,574</b>	<b>6,963</b>	<b>6,967</b>	<b>6,920</b>	<b>7,120</b>	<b>7,424</b>	<b>7,708</b>	<b>8,074</b>	<b>8,408</b>	Historical
Non Bed	478	438	419	420	401	445	433	396	404	428	411	399	448	453	471	490	Average
<b>Total Beds Occupied</b>	<b>4,060</b>	<b>4,567</b>	<b>4,941</b>	<b>5,204</b>	<b>5,215</b>	<b>5,623</b>	<b>5,798</b>	<b>6,178</b>	<b>6,559</b>	<b>6,539</b>	<b>6,509</b>	<b>6,721</b>	<b>6,976</b>	<b>7,255</b>	<b>7,603</b>	<b>7,918</b>	Percent
Annual Percent Increase	10.1%	12.5%	8.2%	5.3%	0.2%	7.8%	3.1%	6.6%	6.2%	-0.3%	-0.5%	3.3%	3.8%	4.0%	4.8%	4.1%	Increase*
<b>Probation</b>																	
Beginning	5,969	5,972	5,917	6,159	6,732	7,481	8,006	8,681	9,242	9,505	9,943	10,170	10,225	10,267	10,369	10,524	
Admissions																	
New Commitments	1,589	1,402	1,548	1,597	1,802	1,819	2,004	2,009	2,079	2,019	2,076	2,017	2,075	2,129	2,173	2,216	
Successful Rider	788	830	834	884	992	1,118	1,287	1,353	1,122	1,309	1,157	1,136	1,382	1,351	1,429	1,452	
<b>Total</b>	<b>2,377</b>	<b>2,232</b>	<b>2,382</b>	<b>2,481</b>	<b>2,794</b>	<b>2,937</b>	<b>3,291</b>	<b>3,362</b>	<b>3,201</b>	<b>3,328</b>	<b>3,233</b>	<b>3,153</b>	<b>3,457</b>	<b>3,480</b>	<b>3,602</b>	<b>3,668</b>	
Releases																	
Revoked Probation	456	494	505	479	520	617	684	702	667	586	476	529	538	535	598	595	
Sentenced to Rider	374	376	397	412	440	603	578	642	667	660	610	731	776	751	818	816	
Discharged	1,544	1,417	1,238	1,017	1,085	1,192	1,354	1,457	1,604	1,644	1,920	1,838	2,101	2,092	2,031	2,040	
<b>Total</b>	<b>2,374</b>	<b>2,287</b>	<b>2,140</b>	<b>1,908</b>	<b>2,045</b>	<b>2,412</b>	<b>2,616</b>	<b>2,801</b>	<b>2,938</b>	<b>2,890</b>	<b>3,006</b>	<b>3,098</b>	<b>3,415</b>	<b>3,378</b>	<b>3,447</b>	<b>3,451</b>	
Net Admission & Releases	3	-55	242	573	749	525	675	561	263	438	227	55	42	102	155	217	Historical
Ending	5,972	5,917	6,159	6,732	7,481	8,006	8,681	9,242	9,505	9,943	10,170	10,225	10,267	10,369	10,524	10,741	Average
Non Caseload	1,203	1,136	1,149	1,452	1,816	2,073	2,140	2,214	2,150	2,125	2,093	2,114	2,187	2,214	2,254	2,306	Percent
Probation Caseload	4,769	4,781	5,010	5,280	5,665	5,933	6,541	7,028	7,355	7,818	8,077	8,111	8,080	8,155	8,270	8,435	Increase*
Annual Percent Increase	-2.3%	0.3%	4.8%	5.4%	7.3%	4.7%	10.2%	7.4%	4.7%	6.3%	3.3%	0.4%	-0.4%	0.9%	1.4%	2.0%	4.6%

Historical Average Percent Increase covers the period 1996 through 2010

## Male Offenders FY 1999 to 2014

	1999	2000	2001	2002	2003	2004	2005	2006	2007	2008	2009	2010	2011	2012	2013	2014	
	Actual	Actual	Actual	Actual	Actual	Actual	Actual	Actual	Actual	Actual	Actual	Actual	Forecast	Forecast			
<b>Parole</b>																	
Beginning Admissions	1,146	1,199	1,215	1,434	1,623	1,890	2,004	2,075	2,203	2,517	2,797	2,925	3,232	3,412	3,616	3,837	
Paroled*	757	672	818	864	1,006	945	977	1,085	1,180	1,252	1,260	1,268	1,151	1,168	1,208	1,225	
Re-instated Violator	78	96	84	135	195	189	250	234	256	278	231	274	298	267	271	281	
<b>Total</b>	<b>835</b>	<b>768</b>	<b>902</b>	<b>999</b>	<b>1,201</b>	<b>1,134</b>	<b>1,227</b>	<b>1,319</b>	<b>1,436</b>	<b>1,530</b>	<b>1,491</b>	<b>1,542</b>	<b>1,449</b>	<b>1,435</b>	<b>1,479</b>	<b>1,506</b>	
<b>Releases</b>																	
Parole Violator	459	403	365	498	463	581	661	631	667	804	764	848	880	794	818	845	
Discharged	323	349	318	312	471	439	495	560	455	446	599	387	389	437	440	395	
<b>Total</b>	<b>782</b>	<b>752</b>	<b>683</b>	<b>810</b>	<b>934</b>	<b>1,020</b>	<b>1,156</b>	<b>1,191</b>	<b>1,122</b>	<b>1,250</b>	<b>1,363</b>	<b>1,235</b>	<b>1,269</b>	<b>1,231</b>	<b>1,258</b>	<b>1,240</b>	
<b>Net Admission &amp; Releases</b>	<b>53</b>	<b>16</b>	<b>219</b>	<b>189</b>	<b>267</b>	<b>114</b>	<b>71</b>	<b>128</b>	<b>314</b>	<b>280</b>	<b>128</b>	<b>307</b>	<b>180</b>	<b>204</b>	<b>221</b>	<b>266</b>	Historical
<b>Ending</b>	<b>1,199</b>	<b>1,215</b>	<b>1,434</b>	<b>1,623</b>	<b>1,890</b>	<b>2,004</b>	<b>2,075</b>	<b>2,203</b>	<b>2,517</b>	<b>2,797</b>	<b>2,925</b>	<b>3,232</b>	<b>3,412</b>	<b>3,616</b>	<b>3,837</b>	<b>4,103</b>	Average
Non Caseload	339	379	377	437	494	530	533	530	635	691	717	854	862	912	970	1,036	Percent
Parole Caseload	860	836	1,057	1,186	1,396	1,474	1,542	1,673	1,882	2,106	2,208	2,378	2,550	2,704	2,867	3,067	Increase*
Annual Percent Increase	4.8%	-2.8%	26.4%	12.2%	17.7%	5.6%	4.6%	8.5%	12.5%	11.9%	4.8%	7.7%	7.2%	6.0%	6.0%	7.0%	10.5%
				129	210	78	68	131	209	224	102	170	172	154	163	200	
<b>Total Supervised</b>	<b>7,171</b>	<b>7,132</b>	<b>7,593</b>	<b>8,355</b>	<b>9,371</b>	<b>10,010</b>	<b>10,756</b>	<b>11,445</b>	<b>12,022</b>	<b>12,740</b>	<b>13,095</b>	<b>13,457</b>	<b>13,679</b>	<b>13,985</b>	<b>14,361</b>	<b>14,844</b>	
Non Caseload	1,542	1,515	1,526	1,889	2,310	2,603	2,673	2,744	2,785	2,816	2,810	2,968	3,049	3,126	3,224	3,342	
Supervised Caseload	5,629	5,617	6,067	6,466	7,061	7,407	8,083	8,701	9,237	9,924	10,285	10,489	10,630	10,859	11,137	11,502	
Annual Percent Increase	-1.3%	-0.2%	8.0%	6.6%	9.2%	4.9%	9.1%	7.6%	6.2%	7.4%	3.6%	2.0%	1.3%	2.2%	2.6%	3.3%	5.6%
<b>Total Incarcerated and Supervised</b>																	
Incarcerated & Supervised	11,709	12,137	12,953	13,979	14,987	16,078	16,987	18,019	18,985	19,707	20,015	20,577	21,103	21,693	22,435	23,252	
Non Bed/Caseload	2,020	1,953	1,945	2,309	2,711	3,048	3,106	3,140	3,189	3,244	3,221	3,367	3,497	3,579	3,695	3,832	
<b>Total Beds &amp; Caseload</b>	<b>9,689</b>	<b>10,184</b>	<b>11,008</b>	<b>11,670</b>	<b>12,276</b>	<b>13,030</b>	<b>13,881</b>	<b>14,879</b>	<b>15,796</b>	<b>16,463</b>	<b>16,794</b>	<b>17,210</b>	<b>17,606</b>	<b>18,114</b>	<b>18,740</b>	<b>19,420</b>	
Annual Percent Increase	3.2%	5.1%	8.1%	6.0%	5.2%	6.1%	6.5%	7.2%	6.2%	4.2%	2.0%	2.5%	2.3%	2.9%	3.5%	3.6%	5.5%

Paroled\* includes values for offenders Paroled plus those transferred into Idaho on Interstate Compact

## Appendix 2: Historical and Forecast Admissions and Releases by Status and Fiscal Year Female Offender FY 1999 to 2014

Term	1999	2000	2001	2002	2003	2004	2005	2006	2007	2008	2009	2010	2011	2012	2013	2014
Beginning Admissions	217	260	329	389	437	444	481	541	595	611	635	588	582	642	690	705
New Commitments	37	40	70	62	56	63	68	59	54	50	48	47	57	56	59	59
Revoked Probation	60	92	78	115	108	111	109	104	134	139	95	106	124	127	132	132
Revoked Parole	34	27	32	26	35	53	77	70	54	57	59	53	65	55	51	62
Failed Rider	19	16	22	17	26	19	25	55	36	30	26	34	36	36	36	36
<b>Total</b>	<b>150</b>	<b>175</b>	<b>202</b>	<b>220</b>	<b>225</b>	<b>246</b>	<b>279</b>	<b>288</b>	<b>278</b>	<b>276</b>	<b>228</b>	<b>240</b>	<b>282</b>	<b>274</b>	<b>278</b>	<b>289</b>
Releases																
Parole	80	82	101	120	172	167	167	170	194	185	212	191	164	179	204	202
Discharged	27	24	41	52	46	42	52	64	68	67	63	55	58	47	59	60
<b>Total</b>	<b>107</b>	<b>106</b>	<b>142</b>	<b>172</b>	<b>218</b>	<b>209</b>	<b>219</b>	<b>234</b>	<b>262</b>	<b>252</b>	<b>275</b>	<b>246</b>	<b>222</b>	<b>226</b>	<b>263</b>	<b>262</b>
Net Admission & Releases	43	69	60	48	7	37	60	54	16	24	-47	-6	60	48	15	27
Ending Non Bed	260	329	389	437	444	481	541	595	611	635	588	582	642	690	705	732
Total Incarcerated	6	14	16	14	16	17	24	21	23	16	14	15	17	18	19	19
Annual Percent Increase	254	315	373	423	428	464	517	574	588	619	574	567	625	672	686	713
	22%	24%	18%	13%	1%	8%	11%	11%	2%	5%	-7%	-1%	10%	8%	2%	4%
																11.3%
<b>Rider</b>																
Beginning Admissions	99	112	120	142	172	181	233	219	238	210	175	183	207	193	200	207
New Commitments	136	137	141	138	168	189	214	238	193	157	175	182	186	193	198	201
Failed Probation	115	115	125	149	137	193	175	238	201	194	163	210	195	181	193	192
<b>Total</b>	<b>251</b>	<b>252</b>	<b>266</b>	<b>287</b>	<b>305</b>	<b>382</b>	<b>389</b>	<b>476</b>	<b>394</b>	<b>351</b>	<b>338</b>	<b>392</b>	<b>381</b>	<b>374</b>	<b>391</b>	<b>393</b>
Releases																
Probation Term	219	228	222	240	270	310	347	402	386	357	304	334	359	331	348	351
	19	16	22	17	26	20	56	55	36	29	26	34	36	36	36	36
<b>Total</b>	<b>238</b>	<b>244</b>	<b>244</b>	<b>257</b>	<b>296</b>	<b>330</b>	<b>403</b>	<b>457</b>	<b>422</b>	<b>386</b>	<b>330</b>	<b>368</b>	<b>395</b>	<b>367</b>	<b>384</b>	<b>387</b>
Net Admission & Releases	13	8	22	30	9	52	-14	19	-28	-35	8	24	-14	7	7	6
Ending Non Bed	112	120	142	172	181	233	219	238	210	175	183	207	193	200	207	213
Total Incarcerated	11	10	12	15	13	28	33	36	23	18	9	22	20	20	21	22
Annual Percent Increase	101	110	130	157	168	205	186	202	187	157	174	185	173	180	186	191
	7%	9%	18%	21%	7%	22%	-9%	9%	-7%	-16%	11%	6%	-6%	4%	3%	3%
																6.5%

Historical Average Percent Increase covers the period 1996 through 2010

## Female Offender FY 1999 to 2014

	1999	2000	2001	2002	2003	2004	2005	2006	2007	2008	2009	2010	2011	2012	2013	2014	
<b>Parole Violator</b>	Actual	Actual	Actual	Actual	Actual	Actual	Actual	Actual	Actual	Actual	Actual	Forecast	Forecast				
Beginning Admissions	22	18	25	17	28	33	40	46	42	36	40	45	56	43	43	42	
Parole	32	46	32	48	60	84	91	103	71	79	87	98	79	79	74	89	
Releases																	
Term	32	27	32	26	35	53	52	70	54	57	59	53	65	55	51	62	
Reinstated Parole	4	12	8	11	20	24	33	37	23	18	23	34	27	24	24	24	
<b>Total</b>	<b>36</b>	<b>39</b>	<b>40</b>	<b>37</b>	<b>55</b>	<b>77</b>	<b>85</b>	<b>107</b>	<b>77</b>	<b>75</b>	<b>82</b>	<b>87</b>	<b>92</b>	<b>79</b>	<b>75</b>	<b>86</b>	
<b>Net Admission &amp; Releases</b>	<b>-4</b>	<b>7</b>	<b>-8</b>	<b>11</b>	<b>5</b>	<b>7</b>	<b>6</b>	<b>-4</b>	<b>-6</b>	<b>4</b>	<b>5</b>	<b>11</b>	<b>-13</b>	<b>0</b>	<b>-1</b>	<b>3</b>	
Ending	18	25	17	28	33	40	46	42	36	40	45	56	43	43	42	45	
Non Bed	11	15	9	10	19	20	21	20	13	17	19	25	17	17	17	18	
<b>Total Incarcerated</b>	<b>7</b>	<b>10</b>	<b>8</b>	<b>18</b>	<b>14</b>	<b>20</b>	<b>25</b>	<b>22</b>	<b>23</b>	<b>23</b>	<b>26</b>	<b>31</b>	<b>26</b>	<b>26</b>	<b>25</b>	<b>27</b>	
Annual Percent Increase	-22%	43%	-20%	125%	-22%	43%	25%	-12%	5%	0%	13%	19%	-16%	0%	-4%	8%	15.0%
<b>Total Incarcerated</b>	<b>390</b>	<b>474</b>	<b>548</b>	<b>637</b>	<b>658</b>	<b>754</b>	<b>806</b>	<b>875</b>	<b>857</b>	<b>850</b>	<b>816</b>	<b>845</b>	<b>878</b>	<b>933</b>	<b>954</b>	<b>990</b>	Historical
Non Bed	28	39	37	39	48	65	78	77	59	51	42	62	54	55	57	59	Average
<b>Total Beds Occupied</b>	<b>362</b>	<b>435</b>	<b>511</b>	<b>598</b>	<b>610</b>	<b>689</b>	<b>728</b>	<b>798</b>	<b>798</b>	<b>799</b>	<b>774</b>	<b>783</b>	<b>824</b>	<b>878</b>	<b>897</b>	<b>931</b>	Percent
Annual Percent Increase	16.4%	20.2%	17.5%	17.0%	2.0%	13.0%	5.7%	9.6%	0.0%	0.1%	-3.1%	1.2%	5.2%	6.6%	2.2%	3.8%	Increase*
	51	73	76	87	12	79	39	70	0	1	-25	9	41	54	19	34	9.6%
<b>Probation</b>																	
Beginning Admissions	1,724	1,799	1,904	2,006	2,207	2,541	2,849	3,191	3,499	3,613	3,609	3,623	3,515	3,666	3,823	4,037	
New Commitments	509	522	541	592	699	756	774	877	781	696	752	679	733	750	764	779	
Successful Rider	217	226	222	241	268	311	376	403	386	356	302	332	358	331	348	351	
<b>Total</b>	<b>726</b>	<b>748</b>	<b>763</b>	<b>833</b>	<b>967</b>	<b>1,067</b>	<b>1,150</b>	<b>1,280</b>	<b>1,167</b>	<b>1,052</b>	<b>1,054</b>	<b>1,011</b>	<b>1,091</b>	<b>1,081</b>	<b>1,112</b>	<b>1,130</b>	
Releases																	
Revoked Probation	60	92	78	115	108	111	105	104	134	138	95	106	141	144	144	144	
Sentenced to Rider	113	110	121	139	129	188	176	235	201	195	163	210	195	181	193	192	
Discharged	478	441	462	378	396	460	527	633	718	723	782	803	604	599	561	611	
<b>Total</b>	<b>651</b>	<b>643</b>	<b>661</b>	<b>632</b>	<b>633</b>	<b>759</b>	<b>808</b>	<b>972</b>	<b>1,053</b>	<b>1,056</b>	<b>1,040</b>	<b>1,119</b>	<b>940</b>	<b>924</b>	<b>898</b>	<b>947</b>	
<b>Net Admission &amp; Releases</b>	<b>75</b>	<b>105</b>	<b>102</b>	<b>201</b>	<b>334</b>	<b>308</b>	<b>342</b>	<b>308</b>	<b>114</b>	<b>-4</b>	<b>14</b>	<b>-108</b>	<b>151</b>	<b>157</b>	<b>214</b>	<b>183</b>	Historical
Ending	1,799	1,904	2,006	2,207	2,541	2,849	3,191	3,499	3,613	3,609	3,623	3,515	3,666	3,823	4,037	4,220	Average
Non Caseload	252	293	294	398	505	586	646	684	643	569	572	571	603	629	664	694	Percent
<b>Probation Caseload</b>	<b>1,547</b>	<b>1,611</b>	<b>1,712</b>	<b>1,809</b>	<b>2,036</b>	<b>2,263</b>	<b>2,545</b>	<b>2,815</b>	<b>2,970</b>	<b>3,040</b>	<b>3,051</b>	<b>2,944</b>	<b>3,063</b>	<b>3,194</b>	<b>3,373</b>	<b>3,526</b>	Increase*
Annual Percent Increase	5.7%	4.1%	6.3%	5.7%	12.5%	11.1%	12.5%	10.6%	5.5%	2.4%	0.4%	-3.5%	4.0%	4.3%	5.6%	4.5%	7.7%

Historical Average Percent Increase covers the period 1996 through 2010



## Female Offender FY 1999 to 2014

	1999	2000	2001	2002	2003	2004	2005	2006	2007	2008	2009	2010	2011	2012	2013	2014	
<b>Parole</b>	Actual	Actual	Actual	Actual	Actual	Actual	Actual	Actual	Actual	Actual	Actual	Forecast	Forecast				
Beginning Admissions	110	138	151	190	234	292	328	343	365	436	466	495	560	564	586	648	
Paroled*	89	96	117	132	185	173	169	182	216	195	217	192	164	179	204	202	
Re-instated Violator	4	9	7	9	18	22	31	34	21	20	24	42	27	24	24	24	
<b>Total</b>	<b>93</b>	<b>105</b>	<b>124</b>	<b>141</b>	<b>203</b>	<b>195</b>	<b>200</b>	<b>216</b>	<b>237</b>	<b>215</b>	<b>241</b>	<b>234</b>	<b>191</b>	<b>203</b>	<b>228</b>	<b>226</b>	
<b>Releases</b>																	
Parole Violator	34	46	32	46	60	81	90	101	71	79	88	98	78	79	74	89	
Discharged	31	46	53	51	85	78	95	93	95	106	124	71	109	102	92	96	
<b>Total</b>	<b>65</b>	<b>92</b>	<b>85</b>	<b>97</b>	<b>145</b>	<b>159</b>	<b>185</b>	<b>194</b>	<b>166</b>	<b>185</b>	<b>212</b>	<b>169</b>	<b>187</b>	<b>181</b>	<b>166</b>	<b>185</b>	
<b>Net Admission &amp; Releases</b>	<b>28</b>	<b>13</b>	<b>39</b>	<b>44</b>	<b>58</b>	<b>36</b>	<b>15</b>	<b>22</b>	<b>71</b>	<b>30</b>	<b>29</b>	<b>65</b>	<b>4</b>	<b>22</b>	<b>62</b>	<b>41</b>	Historical
Ending	138	151	190	234	292	328	343	365	436	466	495	560	564	586	648	689	Average
Non Caseload	22	23	24	36	43	43	45	56	62	69	75	91	82	85	94	100	Percent
Parole Caseload	116	128	166	198	249	285	298	309	374	397	420	469	482	501	554	589	Increase*
Annual Percent Increase	23.4%	10.3%	29.7%	19.3%	25.8%	14.5%	4.6%	3.7%	21.0%	6.1%	5.8%	11.7%	2.8%	3.9%	10.6%	6.3%	16.3%
<b>Total Supervised</b>	<b>1,937</b>	<b>2,055</b>	<b>2,196</b>	<b>2,441</b>	<b>2,833</b>	<b>3,177</b>	<b>3,534</b>	<b>3,864</b>	<b>4,049</b>	<b>4,075</b>	<b>4,118</b>	<b>4,075</b>	<b>4,230</b>	<b>4,409</b>	<b>4,685</b>	<b>4,909</b>	
Non Caseload	274	316	318	434	548	629	691	740	705	638	647	662	685	714	758	794	
Supervised Caseload	1,663	1,739	1,878	2,007	2,285	2,548	2,843	3,124	3,344	3,437	3,471	3,413	3,545	3,695	3,927	4,115	
Annual Percent Increase	6.8%	4.6%	8.0%	6.9%	13.9%	11.5%	11.6%	9.9%	7.0%	2.8%	1.0%	-1.7%	3.9%	4.2%	6.3%	4.8%	8.4%
<b>Total Incarcerated and Supervised</b>																	
Incarcerated & Supervised	2,327	2,529	2,744	3,078	3,491	3,931	4,340	4,739	4,906	4,925	4,934	4,920	5,108	5,342	5,639	5,899	
Non Bed/Caseload	302	355	355	473	596	694	769	817	764	689	689	724	739	769	815	853	
<b>Total Beds &amp; Caseload</b>	<b>2,025</b>	<b>2,174</b>	<b>2,389</b>	<b>2,605</b>	<b>2,895</b>	<b>3,237</b>	<b>3,571</b>	<b>3,922</b>	<b>4,142</b>	<b>4,236</b>	<b>4,245</b>	<b>4,196</b>	<b>4,369</b>	<b>4,573</b>	<b>4,824</b>	<b>5,046</b>	
Annual Percent Increase	8.4%	7.4%	9.9%	9.0%	11.1%	11.8%	10.3%	9.8%	5.6%	2.3%	0.2%	-1.2%	4.1%	4.7%	5.5%	4.6%	8.6%

Paroled\* includes values for offenders Paroled plus those transferred into Idaho on Interstate Compact

### Appendix 3: Forecast Admissions and Releases by Month and Status for FY 2011

#### Monthly Admissions and Releases

Term	Jul	Aug	Sep	Oct	Nov	Dec	Jan	Feb	Mar	Apr	May	Jun
<b>Admissions</b>												
New Commitments	59	52	49	54	51	51	54	49	58	54	52	55
Revoked Probation	58	53	56	55	56	59	59	62	57	55	56	53
Revoked Parole	66	57	51	47	47	51	52	54	56	55	54	52
Failed Rider	19	21	22	22	23	23	22	20	19	20	20	20
<b>Total Admissions</b>	<b>202</b>	<b>183</b>	<b>178</b>	<b>178</b>	<b>177</b>	<b>184</b>	<b>187</b>	<b>185</b>	<b>190</b>	<b>184</b>	<b>182</b>	<b>180</b>
<b>Releases</b>												
Paroled	97	111	116	121	120	114	111	106	106	100	100	113
Discharged	54	41	41	42	44	47	46	48	49	44	44	43
<b>Total Releases</b>	<b>151</b>	<b>152</b>	<b>157</b>	<b>163</b>	<b>164</b>	<b>161</b>	<b>157</b>	<b>154</b>	<b>155</b>	<b>144</b>	<b>144</b>	<b>156</b>
<b>Net Admissions/Releases</b>	<b>51</b>	<b>31</b>	<b>21</b>	<b>15</b>	<b>13</b>	<b>23</b>	<b>30</b>	<b>31</b>	<b>35</b>	<b>40</b>	<b>38</b>	<b>24</b>
<b>Beginning</b>												
6,418	6,469	6,500	6,521	6,536	6,549	6,572	6,602	6,633	6,668	6,708	6,746	6,746
<b>Net Admission &amp; Releases</b>												
51	31	21	15	13	23	30	31	35	40	38	24	24
<b>Ending</b>												
6,469	6,500	6,521	6,536	6,549	6,572	6,602	6,633	6,668	6,708	6,746	6,746	6,770
<b>Non Bed</b>												
161	174	180	181	173	164	170	168	169	176	175	175	175
<b>Net Term</b>												
6,308	6,326	6,341	6,355	6,376	6,408	6,432	6,465	6,499	6,532	6,571	6,571	6,595
<b>Rider</b>												
<b>Admissions</b>												
New Commitments	85	86	76	78	78	80	84	78	95	94	89	88
Failed Probation	126	76	75	76	81	81	85	77	75	76	72	74
<b>Total</b>	<b>211</b>	<b>162</b>	<b>151</b>	<b>154</b>	<b>159</b>	<b>161</b>	<b>169</b>	<b>155</b>	<b>170</b>	<b>170</b>	<b>161</b>	<b>162</b>
<b>Releases</b>												
Probation	123	138	147	156	153	163	160	153	136	135	138	143
Term	19	21	22	22	23	23	22	20	19	20	20	20
<b>Total</b>	<b>142</b>	<b>159</b>	<b>169</b>	<b>178</b>	<b>176</b>	<b>186</b>	<b>182</b>	<b>173</b>	<b>155</b>	<b>155</b>	<b>158</b>	<b>163</b>
<b>Net Admission &amp; Releases</b>	<b>69</b>	<b>3</b>	<b>-18</b>	<b>-24</b>	<b>-17</b>	<b>-25</b>	<b>-13</b>	<b>-18</b>	<b>15</b>	<b>15</b>	<b>3</b>	<b>-1</b>
<b>Beginning</b>												
989	1,058	1,061	1,043	1,019	1,002	977	964	946	961	976	976	979
<b>Net Admission &amp; Releases</b>												
69	3	-18	-24	-17	-25	-13	-18	15	15	3	-1	-1
<b>Ending</b>												
1,058	1,061	1,043	1,019	1,002	977	964	946	961	976	979	979	978
<b>Non Bed</b>												
126	171	163	145	148	132	143	141	130	132	137	137	133
<b>Net Rider</b>												
932	890	880	874	854	845	821	805	831	844	844	842	845

### Appendix 3 Continued

		Monthly Admissions and Releases											
		Jul	Aug	Sep	Oct	Nov	Dec	Jan	Feb	Mar	Apr	May	Jun
<b>Parole Violator</b>													
Admissions													
Parole		79	78	82	84	86	79	78	79	84	83	75	72
Releases													
Term		66	57	51	47	47	51	52	54	56	55	54	52
Reinstated Parole		26	24	25	26	27	28	28	27	26	27	27	27
Discharged		3	0	0	0	0	0	0	0	0	0	0	0
Total		95	81	76	73	74	79	80	81	82	82	81	79
Net Admission & Releases		-16	-3	6	11	12	0	-2	-2	2	1	-6	-7
Beginning		558	542	539	545	556	568	568	566	564	566	567	561
Net Admission & Releases		-16	-3	6	11	12	0	-2	-2	2	1	-6	-7
Ending		542	539	545	556	568	568	566	564	566	567	561	554
Non Bed		181	200	204	214	213	211	205	203	195	206	205	194
Net Parole Violator		361	339	341	342	355	357	361	361	371	361	356	360
<b>Net Incarcerations</b>		<b>7,601</b>	<b>7,555</b>	<b>7,562</b>	<b>7,571</b>	<b>7,585</b>	<b>7,610</b>	<b>7,614</b>	<b>7,631</b>	<b>7,701</b>	<b>7,737</b>	<b>7,769</b>	<b>7,800</b>
<b>Probation</b>													
Admissions													
New Commitments		209	230	227	243	225	234	237	214	258	246	246	239
Successful Rider		118	138	147	156	153	163	160	153	136	135	138	143
Total		327	368	374	399	378	397	397	367	394	381	384	382
Releases													
Revoked Probation		58	53	56	55	56	59	59	62	57	55	56	53
RevRJ		123	76	75	76	81	81	85	77	75	76	72	74
Discharged		213	212	216	224	224	228	241	240	227	234	225	221
Total		394	341	347	355	361	368	385	379	359	365	353	348
Net Admission & Releases		-67	27	27	44	17	29	12	-12	35	16	31	34
Beginning		13,740	13,673	13,700	13,727	13,771	13,788	13,817	13,829	13,817	13,852	13,868	13,899
Net Admission & Releases		-67	27	27	44	17	29	12	-12	35	16	31	34
Ending		13,673	13,700	13,727	13,771	13,788	13,817	13,829	13,817	13,852	13,868	13,899	13,933
Non Caseload		2,683	2,834	2,852	2,867	2,853	2,825	2,802	2,808	2,792	2,780	2,800	2,790
Net Probation Caseload		10,990	10,866	10,875	10,904	10,935	10,992	11,027	11,009	11,060	11,088	11,099	11,143

### Appendix 3 Continued

Parole	Monthly Admissions and Releases											
	Jul	Aug	Sep	Oct	Nov	Dec	Jan	Feb	Mar	Apr	May	Jun
Admissions												
Paroled	97	111	116	121	120	114	111	106	106	100	100	113
Re-instated Violator	33	24	25	26	27	28	28	27	26	27	27	27
Total	130	135	141	147	147	142	139	133	132	127	127	140
Releases												
Parole Violator	78	78	82	84	86	79	78	79	84	83	75	72
Discharged	5	43	41	45	46	45	44	46	41	46	47	49
Total	83	121	123	129	132	124	122	125	125	129	122	121
Net Admission & Releases	47	14	18	18	15	18	17	8	7	-2	5	19
Beginning	3,792	3,839	3,853	3,871	3,889	3,904	3,922	3,939	3,947	3,954	3,952	3,957
Net Admission & Releases	47	14	18	18	15	18	17	8	7	-2	5	19
Ending	3,839	3,853	3,871	3,889	3,904	3,922	3,939	3,947	3,954	3,952	3,957	3,976
Non Caseload	976	892	900	907	911	929	933	947	945	933	933	944
Net Parole Caseload	2,863	2,961	2,971	2,982	2,993	2,993	3,006	3,000	3,009	3,019	3,024	3,032
<b>Net CC Caseload</b>	<b>13,853</b>	<b>13,827</b>	<b>13,846</b>	<b>13,886</b>	<b>13,928</b>	<b>13,985</b>	<b>14,033</b>	<b>14,009</b>	<b>14,069</b>	<b>14,107</b>	<b>14,123</b>	<b>14,175</b>
<b>Net Bed and Caseload</b>	<b>21,454</b>	<b>21,382</b>	<b>21,408</b>	<b>21,457</b>	<b>21,513</b>	<b>21,595</b>	<b>21,647</b>	<b>21,640</b>	<b>21,770</b>	<b>21,844</b>	<b>21,892</b>	<b>21,975</b>

## Appendix 4: Forecast Admissions and Releases for Males by Month and Status for FY 2011

Term	Monthly Admissions and Releases											
	Jul	Aug	Sep	Oct	Nov	Dec	Jan	Feb	Mar	Apr	May	Jun
<b>Admissions</b>												
New Commitments	53	47	45	49	47	45	50	45	52	50	48	50
Revoked Probation	49	41	44	43	46	50	49	53	47	45	45	43
Revoked Parole	63	48	42	42	41	45	46	50	52	51	50	47
Revoked Rider	16	18	19	19	20	20	19	17	16	17	17	17
<b>Total Admissions</b>	<b>181</b>	<b>154</b>	<b>150</b>	<b>153</b>	<b>154</b>	<b>160</b>	<b>164</b>	<b>165</b>	<b>167</b>	<b>163</b>	<b>160</b>	<b>157</b>
<b>Releases</b>												
Paroled	88	95	103	106	106	97	95	90	92	86	90	103
Discharged	48	37	36	37	39	42	41	43	44	39	40	39
<b>Total Releases</b>	<b>136</b>	<b>132</b>	<b>139</b>	<b>143</b>	<b>145</b>	<b>139</b>	<b>136</b>	<b>133</b>	<b>136</b>	<b>125</b>	<b>130</b>	<b>142</b>
<b>Net Admissions/Releases</b>	<b>45</b>	<b>22</b>	<b>11</b>	<b>10</b>	<b>9</b>	<b>21</b>	<b>28</b>	<b>32</b>	<b>31</b>	<b>38</b>	<b>30</b>	<b>15</b>
<b>Beginning</b>												
Net Admissions/Releases	45	22	11	10	9	21	28	32	31	38	30	15
<b>Ending</b>	<b>5,881</b>	<b>5,903</b>	<b>5,914</b>	<b>5,924</b>	<b>5,933</b>	<b>5,954</b>	<b>5,982</b>	<b>6,014</b>	<b>6,045</b>	<b>6,083</b>	<b>6,113</b>	<b>6,128</b>
Non Bed	146	158	162	164	156	148	152	152	151	159	157	158
<b>Net Term</b>	<b>5,735</b>	<b>5,745</b>	<b>5,752</b>	<b>5,760</b>	<b>5,777</b>	<b>5,806</b>	<b>5,830</b>	<b>5,862</b>	<b>5,894</b>	<b>5,924</b>	<b>5,956</b>	<b>5,970</b>
<b>Rider</b>												
<b>Admissions</b>												
New Commitments	74	70	60	62	63	64	68	64	77	77	73	73
Failed Probation	100	61	60	61	64	63	67	62	62	62	58	59
<b>Total</b>	<b>174</b>	<b>131</b>	<b>120</b>	<b>123</b>	<b>127</b>	<b>127</b>	<b>135</b>	<b>126</b>	<b>139</b>	<b>139</b>	<b>131</b>	<b>132</b>
<b>Releases</b>												
Probation	99	110	117	123	120	129	128	123	108	107	109	113
Term	16	18	19	19	20	20	19	17	16	17	17	17
<b>Total</b>	<b>115</b>	<b>128</b>	<b>136</b>	<b>142</b>	<b>140</b>	<b>149</b>	<b>147</b>	<b>140</b>	<b>124</b>	<b>124</b>	<b>126</b>	<b>130</b>
<b>Net Admission &amp; Releases</b>	<b>59</b>	<b>3</b>	<b>-16</b>	<b>-19</b>	<b>-13</b>	<b>-22</b>	<b>-12</b>	<b>-14</b>	<b>15</b>	<b>15</b>	<b>5</b>	<b>2</b>
<b>Beginning</b>												
Net Admissions/Releases	59	3	-16	-19	-13	-22	-12	-14	15	15	5	2
<b>Ending</b>	<b>841</b>	<b>844</b>	<b>828</b>	<b>809</b>	<b>796</b>	<b>774</b>	<b>762</b>	<b>748</b>	<b>763</b>	<b>778</b>	<b>783</b>	<b>785</b>
Non Bed	106	140	134	116	122	110	120	119	105	107	115	113
<b>Net Rider</b>	<b>735</b>	<b>704</b>	<b>694</b>	<b>693</b>	<b>674</b>	<b>664</b>	<b>642</b>	<b>629</b>	<b>658</b>	<b>671</b>	<b>668</b>	<b>672</b>

## Appendix 4 Continued

		Monthly Admissions and Releases											
		Jul	Aug	Sep	Oct	Nov	Dec	Jan	Feb	Mar	Apr	May	Jun
<b>Parole Violator</b>													
Admissions													
Parole		73	72	76	78	79	73	70	72	77	77	69	64
Releases													
Term		63	48	42	42	41	45	46	50	52	51	50	47
Reinstated Parole		23	21	23	23	25	26	26	25	24	25	25	25
Discharged		3	0	0	0	0	0	0	0	0	0	0	0
	Total	89	69	65	65	66	71	72	75	76	76	75	72
Net Admission & Releases		-16	3	11	13	13	2	-2	-3	1	1	-6	-8
Beginning		502	486	489	500	513	526	528	526	523	524	525	519
Net Admissions/Releases		-16	3	11	13	13	2	-2	-3	1	1	-6	-8
Ending		486	489	500	513	526	528	526	523	524	525	519	511
Non Bed		158	177	184	195	195	194	189	186	177	190	189	177
Net Parole Violator		328	312	316	318	331	334	337	337	347	335	330	334
Net Incarcerations		6,798	6,761	6,762	6,771	6,782	6,804	6,809	6,828	6,899	6,930	6,954	6,976
<b>Probation</b>													
Admissions													
New Commitments		151	170	166	180	168	172	176	157	191	180	185	179
Successful Rider		95	110	117	123	120	129	128	123	108	107	109	113
	Total	246	280	283	303	288	301	304	280	299	287	294	292
Releases													
Revoked Probation		49	41	44	43	44	47	47	50	45	43	44	41
RevRJ		97	61	60	61	64	63	67	62	62	62	58	59
Discharged		163	157	161	175	173	179	191	191	178	187	174	172
	Total	309	259	265	279	281	289	305	303	285	292	276	272
Net Admission & Releases		-63	21	18	24	7	12	-1	-23	14	-5	18	20
Beginning		10,225	10,162	10,183	10,201	10,225	10,232	10,244	10,243	10,220	10,234	10,229	10,247
Net Admissions/Rel		-63	21	18	24	7	12	-1	-23	14	-5	18	20
Ending		10,162	10,183	10,201	10,225	10,232	10,244	10,243	10,220	10,234	10,229	10,247	10,267
Non Caseload		2,110	2,255	2,272	2,283	2,268	2,237	2,212	2,216	2,197	2,181	2,199	2,187
Net Probation Caseload		8,052	7,928	7,929	7,942	7,964	8,007	8,031	8,004	8,037	8,048	8,048	8,080

## Appendix 4 Continued

### Monthly Admissions and Releases

<b>Parole</b>	Jul	Aug	Sep	Oct	Nov	Dec	Jan	Feb	Mar	Apr	May	Jun
<b>Admissions</b>												
Paroled	88	95	103	106	106	97	95	90	92	86	90	103
Re-instated Violator	30	21	23	23	25	26	26	25	24	25	25	25
<b>Total</b>	<b>118</b>	<b>116</b>	<b>126</b>	<b>129</b>	<b>131</b>	<b>123</b>	<b>121</b>	<b>115</b>	<b>116</b>	<b>111</b>	<b>115</b>	<b>128</b>
<b>Releases</b>												
Parole Violator	73	72	76	78	79	73	70	72	77	77	69	64
Discharged	4	34	31	36	35	34	33	35	30	37	39	41
<b>Total</b>	<b>77</b>	<b>106</b>	<b>107</b>	<b>114</b>	<b>114</b>	<b>107</b>	<b>103</b>	<b>107</b>	<b>107</b>	<b>114</b>	<b>108</b>	<b>105</b>
<b>Net Admission &amp; Releases</b>	<b>41</b>	<b>10</b>	<b>19</b>	<b>15</b>	<b>17</b>	<b>16</b>	<b>18</b>	<b>8</b>	<b>9</b>	<b>-3</b>	<b>7</b>	<b>23</b>
<b>Beginning</b>	<b>3,232</b>	<b>3,273</b>	<b>3,283</b>	<b>3,302</b>	<b>3,317</b>	<b>3,334</b>	<b>3,350</b>	<b>3,368</b>	<b>3,376</b>	<b>3,385</b>	<b>3,382</b>	<b>3,389</b>
Net Admissions/Releases	41	10	19	15	17	16	18	8	9	-3	7	23
<b>Ending</b>	<b>3,273</b>	<b>3,283</b>	<b>3,302</b>	<b>3,317</b>	<b>3,334</b>	<b>3,350</b>	<b>3,368</b>	<b>3,376</b>	<b>3,385</b>	<b>3,382</b>	<b>3,389</b>	<b>3,412</b>
Non Caseload	884	810	818	826	829	844	849	860	859	852	851	862
<b>Net Parole Caseload</b>	<b>2,389</b>	<b>2,473</b>	<b>2,484</b>	<b>2,491</b>	<b>2,505</b>	<b>2,506</b>	<b>2,519</b>	<b>2,516</b>	<b>2,526</b>	<b>2,530</b>	<b>2,538</b>	<b>2,550</b>
<b>Net CC Caseload</b>	<b>10,441</b>	<b>10,401</b>	<b>10,413</b>	<b>10,433</b>	<b>10,469</b>	<b>10,513</b>	<b>10,550</b>	<b>10,520</b>	<b>10,563</b>	<b>10,578</b>	<b>10,586</b>	<b>10,630</b>
<b>Net Bed and Caseload</b>	<b>17,239</b>	<b>17,162</b>	<b>17,175</b>	<b>17,204</b>	<b>17,251</b>	<b>17,317</b>	<b>17,359</b>	<b>17,348</b>	<b>17,462</b>	<b>17,508</b>	<b>17,540</b>	<b>17,606</b>

## Appendix 5: Forecast Admissions and Releases for Females by Month and Status for FY 2011

Term	Monthly Admissions and Releases											
	Jul	Aug	Sep	Oct	Nov	Dec	Jan	Feb	Mar	Apr	May	Jun
<b>Admissions</b>												
New Commitments	6	5	4	5	4	6	4	4	6	4	4	5
Revoked Probation	9	12	12	12	10	9	10	9	10	10	11	10
Revoked Parole	3	9	9	5	6	6	6	4	4	4	4	5
Revoked Rider	3	3	3	3	3	3	3	3	3	3	3	3
<b>Total Admissions</b>	<b>21</b>	<b>29</b>	<b>28</b>	<b>25</b>	<b>23</b>	<b>24</b>	<b>23</b>	<b>20</b>	<b>23</b>	<b>21</b>	<b>22</b>	<b>23</b>
<b>Releases</b>												
Paroled	9	16	13	15	14	17	16	16	14	14	10	10
Discharged	6	4	5	5	5	5	5	5	5	5	4	4
<b>Total Releases</b>	<b>15</b>	<b>20</b>	<b>18</b>	<b>20</b>	<b>19</b>	<b>22</b>	<b>21</b>	<b>21</b>	<b>19</b>	<b>19</b>	<b>14</b>	<b>14</b>
<b>Net Admissions/Releases</b>	<b>6</b>	<b>9</b>	<b>10</b>	<b>5</b>	<b>4</b>	<b>2</b>	<b>2</b>	<b>-1</b>	<b>4</b>	<b>2</b>	<b>8</b>	<b>9</b>
<b>Beginning</b>	<b>582</b>	<b>588</b>	<b>597</b>	<b>607</b>	<b>612</b>	<b>616</b>	<b>618</b>	<b>620</b>	<b>619</b>	<b>623</b>	<b>625</b>	<b>633</b>
<b>Net Admissions/Releases</b>	<b>6</b>	<b>9</b>	<b>10</b>	<b>5</b>	<b>4</b>	<b>2</b>	<b>2</b>	<b>-1</b>	<b>4</b>	<b>2</b>	<b>8</b>	<b>9</b>
<b>Ending</b>	<b>588</b>	<b>597</b>	<b>607</b>	<b>612</b>	<b>616</b>	<b>618</b>	<b>620</b>	<b>619</b>	<b>623</b>	<b>625</b>	<b>633</b>	<b>642</b>
<b>Non Bed</b>	<b>15</b>	<b>16</b>	<b>18</b>	<b>17</b>	<b>17</b>	<b>16</b>	<b>18</b>	<b>16</b>	<b>18</b>	<b>17</b>	<b>18</b>	<b>17</b>
<b>Net Term</b>	<b>573</b>	<b>581</b>	<b>589</b>	<b>595</b>	<b>599</b>	<b>602</b>	<b>602</b>	<b>603</b>	<b>605</b>	<b>608</b>	<b>615</b>	<b>625</b>
<b>Rider</b>												
<b>Admissions</b>												
New Commitments	11	16	16	16	15	16	16	14	18	17	16	15
Failed Probation	26	15	15	15	17	18	18	15	13	14	14	15
<b>Total</b>	<b>37</b>	<b>31</b>	<b>31</b>	<b>31</b>	<b>32</b>	<b>34</b>	<b>34</b>	<b>29</b>	<b>31</b>	<b>31</b>	<b>30</b>	<b>30</b>
<b>Releases</b>												
Probation	24	28	30	33	33	34	32	30	28	28	29	30
Term	3	3	3	3	3	3	3	3	3	3	3	3
<b>Total</b>	<b>27</b>	<b>31</b>	<b>33</b>	<b>36</b>	<b>36</b>	<b>37</b>	<b>35</b>	<b>33</b>	<b>31</b>	<b>31</b>	<b>32</b>	<b>33</b>
<b>Net Admissions/Releases</b>	<b>10</b>	<b>0</b>	<b>-2</b>	<b>-5</b>	<b>-4</b>	<b>-3</b>	<b>-1</b>	<b>-4</b>	<b>0</b>	<b>0</b>	<b>-2</b>	<b>-3</b>
<b>Beginning</b>	<b>207</b>	<b>217</b>	<b>217</b>	<b>215</b>	<b>210</b>	<b>206</b>	<b>203</b>	<b>202</b>	<b>198</b>	<b>198</b>	<b>198</b>	<b>196</b>
<b>Net Admissions/Releases</b>	<b>10</b>	<b>0</b>	<b>-2</b>	<b>-5</b>	<b>-4</b>	<b>-3</b>	<b>-1</b>	<b>-4</b>	<b>0</b>	<b>0</b>	<b>-2</b>	<b>-3</b>
<b>Ending</b>	<b>217</b>	<b>217</b>	<b>215</b>	<b>210</b>	<b>206</b>	<b>203</b>	<b>202</b>	<b>198</b>	<b>198</b>	<b>198</b>	<b>196</b>	<b>193</b>
<b>Non Bed</b>	<b>20</b>	<b>31</b>	<b>29</b>	<b>29</b>	<b>26</b>	<b>22</b>	<b>23</b>	<b>22</b>	<b>25</b>	<b>25</b>	<b>22</b>	<b>20</b>
<b>Net Rider</b>	<b>197</b>	<b>186</b>	<b>186</b>	<b>181</b>	<b>180</b>	<b>181</b>	<b>179</b>	<b>176</b>	<b>173</b>	<b>173</b>	<b>174</b>	<b>173</b>



## Appendix 5 Continued

		Monthly Admissions and Releases											
		Jul	Aug	Sep	Oct	Nov	Dec	Jan	Feb	Mar	Apr	May	Jun
<b>Parole Violator</b>													
Admissions													
Parole		6	6	6	6	7	6	8	7	7	6	6	8
Releases													
Term		3	9	9	5	6	6	6	4	4	4	4	5
Reinstated Parole		3	3	2	3	2	2	2	2	2	2	2	2
Discharged		0	0	0	0	0	0	0	0	0	0	0	0
Total		6	12	11	8	8	8	8	6	6	6	6	7
Net Admissions/Releases		0	-6	-5	-2	-1	-2	0	1	1	0	0	1
Beginning		56	56	50	45	43	42	40	40	41	42	42	42
Net Admissions/Releases		0	-6	-5	-2	-1	-2	0	1	1	0	0	1
Ending		56	50	45	43	42	40	40	41	42	42	42	43
Non Bed		23	23	20	19	18	17	16	17	18	16	16	17
Net Parole Violator		33	27	25	24	24	23	24	24	24	26	26	26
Net Incarcerations		803	794	800	800	803	806	805	803	802	807	815	824
<b>Probation</b>													
Admissions													
New Commitments		58	60	61	63	57	62	61	57	67	66	61	60
Successful Rider		23	28	30	33	33	34	32	30	28	28	29	30
Total		81	88	91	96	90	96	93	87	95	94	90	90
Releases													
Revoked Probation		9	12	12	12	12	12	12	12	12	12	12	12
RevRJ		26	15	15	15	17	18	18	15	13	14	14	15
Discharged		50	55	55	49	51	49	50	49	49	47	51	49.0
Total		85	82	82	76	80	79	80	76	74	73	77	76
Net Admissions/Releases		-4	6	9	20	10	17	13	11	21	21	13	14
Beginning		3,515	3,511	3,517	3,526	3,546	3,556	3,573	3,586	3,597	3,618	3,639	3,652
Net Admissions/Releases		-4	6	9	20	10	17	13	11	21	21	13	14
Ending		3,511	3,517	3,526	3,546	3,556	3,573	3,586	3,597	3,618	3,639	3,652	3,666
Non Caseload		573	579	580	584	585	588	590	592	595	599	601	603
Net Probation Caseload		2,938	2,938	2,946	2,962	2,971	2,985	2,996	3,005	3,023	3,040	3,051	3,063

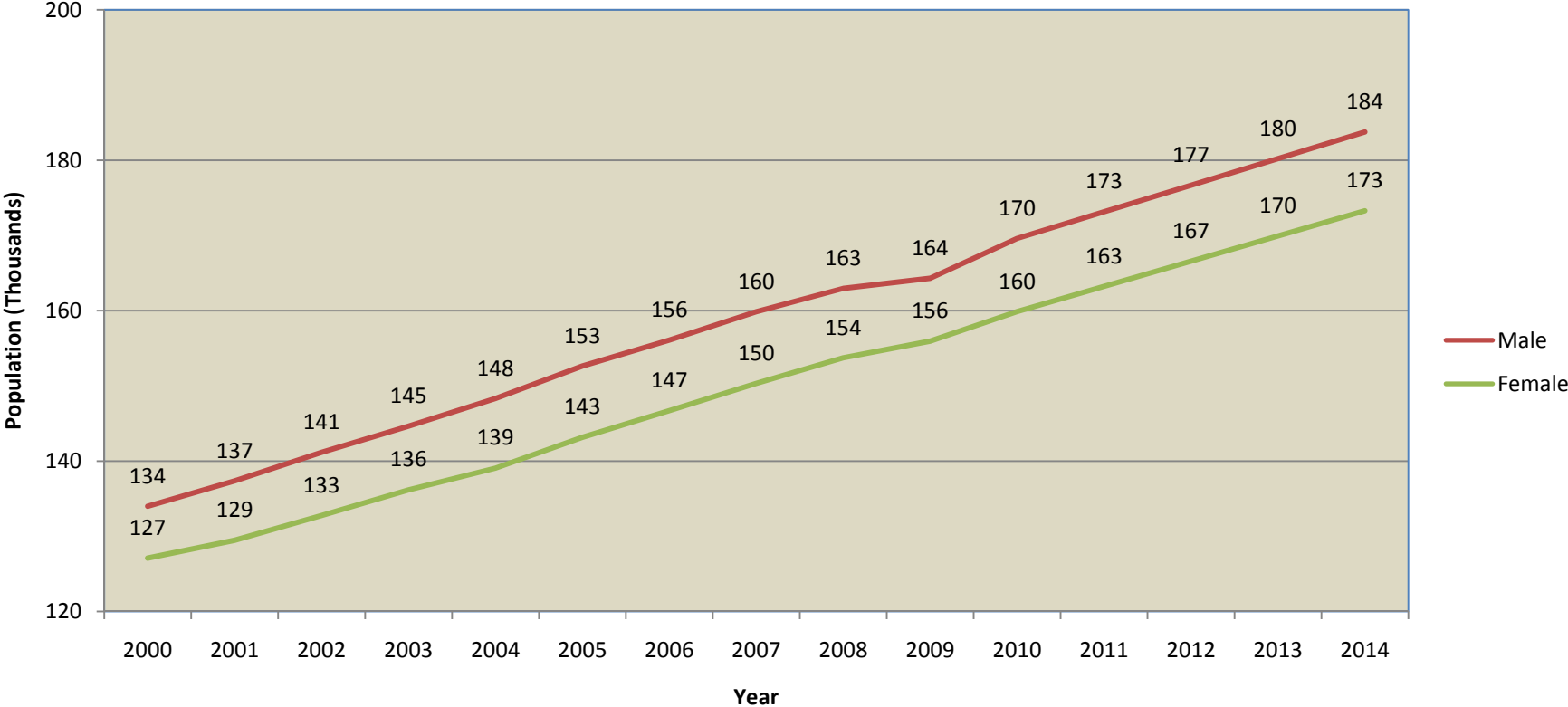
## Appendix 5 Continued

		Monthly Admissions and Releases											
<b>Parole</b>		Jul	Aug	Sep	Oct	Nov	Dec	Jan	Feb	Mar	Apr	May	Jun
Admissions													
	Paroled	9	16	13	15	14	17	16	16	14	14	10	10
	Re-instated Violator	3	3	2	3	2	2	2	2	2	2	2	2
	<b>Total</b>	<b>12</b>	<b>19</b>	<b>15</b>	<b>18</b>	<b>16</b>	<b>19</b>	<b>18</b>	<b>18</b>	<b>16</b>	<b>16</b>	<b>12</b>	<b>12</b>
Releases													
	Parole Violator	5	6	6	6	7	6	8	7	7	6	6	8
	Discharged	1	9	10	9	11	11	11	11	11	9	8	8
	<b>Total</b>	<b>6</b>	<b>15</b>	<b>16</b>	<b>15</b>	<b>18</b>	<b>17</b>	<b>19</b>	<b>18</b>	<b>18</b>	<b>15</b>	<b>14</b>	<b>16</b>
	Net Admissions/Releases	6	4	-1	3	-2	2	-1	0	-2	1	-2	-4
Beginning		560	566	570	569	572	570	572	571	571	569	570	568
	Net Admissions/Releases	6	4	-1	3	-2	2	-1	0	-2	1	-2	-4
Ending		566	570	569	572	570	572	571	571	569	570	568	564
	Non Caseload	92	82	82	81	82	85	84	87	86	81	82	82
Net Parole Caseload		474	488	487	491	488	487	487	484	483	489	486	482
<b>Net CC Caseload</b>		<b>3,412</b>	<b>3,426</b>	<b>3,433</b>	<b>3,453</b>	<b>3,459</b>	<b>3,472</b>	<b>3,483</b>	<b>3,489</b>	<b>3,506</b>	<b>3,529</b>	<b>3,537</b>	<b>3,545</b>
<b>Net Bed and Caseload</b>		<b>4,215</b>	<b>4,220</b>	<b>4,233</b>	<b>4,253</b>	<b>4,262</b>	<b>4,278</b>	<b>4,288</b>	<b>4,292</b>	<b>4,308</b>	<b>4,336</b>	<b>4,352</b>	<b>4,369</b>

# Appendix 6: State Population Estimates by Gender

The chart below shows the number of Idaho citizens from 20 to 34 years of age by gender and fiscal year. It is based on Census data and shows an average annual increase of 2.0% for males and 2.0% for females over the forecast period. This is the indicator group for new court commitments.

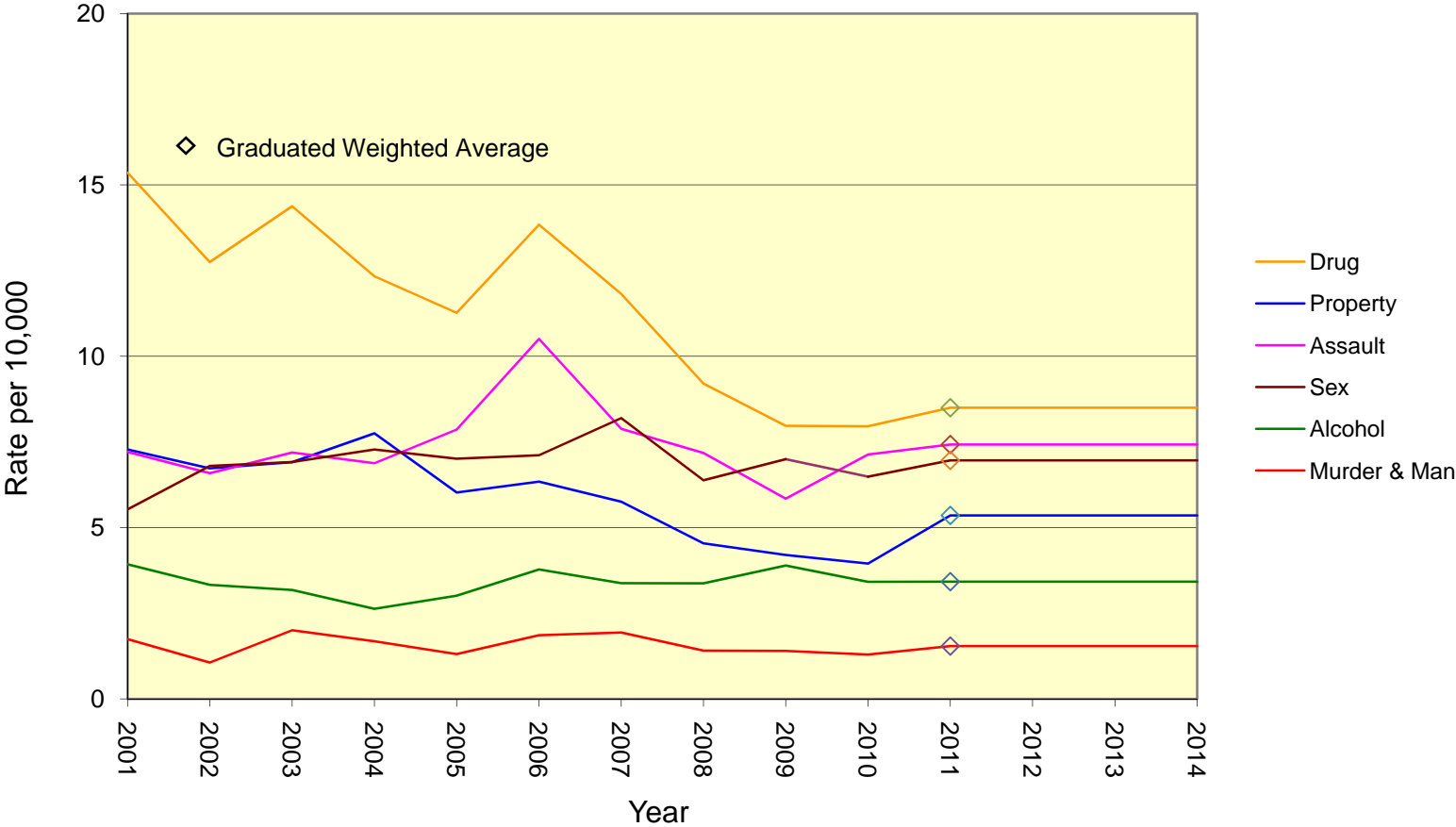
### Idaho Population (Ages 20-34)



### Appendix 7: Court Commitment Rates

The chart below illustrates historical and forecast court commitment rates for males to prison by year and crime group. The chart shows both volatility from year to year and clear changes in historic patterns. The diamonds represent the FAC selected forecast rates. The GWA value is the starting point for FAC deliberations regarding what rate to use to estimate future court commitments. For the FY 2011 forecast, the FAC chose to use a slightly lower than GWA rate for male commitments for Drug crimes and the GWA for all other crimes.

**Male Court Commitment Rates to Term**



## Appendix 7 Continued, Historical Court Commitment Rates with Calculated GWA by Gender Status and Crime

The table below shows the annual commitment rate and the calculated GWA by commitment type and gender and FAC selected rates.

### Court Commitment Rates for Males to Probation. FAC elected to use a rate of 20.0 for Alcohol crimes and 35.0 for Drug crimes.

Crime Group	Year																	
	1997	1998	1999	2000	2001	2002	2003	2004	2005	2006	2007	2008	2009	2010	2011	2012	2013	2014
Alcohol	13.6	10.1	10.0	9.3	10.6	10.5	10.7	9.0	7.9	10.5	14.1	22.4	26.5	24.5	20.0	20.0	20.0	20.0
Assault	14.7	14.4	19.7	15.2	17.5	19.3	22.5	19.0	22.5	21.5	27.1	22.4	22.3	20.2	22.0	22.0	22.0	22.0
Drug	34.7	38.1	39.6	35.8	40.0	37.8	43.0	44.7	53.3	49.5	47.7	37.6	35.3	32.9	35.0	35.0	35.0	35.0
Murder & Man	0.6	0.5	0.4	0.4	0.6	0.6	0.5	0.3	0.4	0.5	0.6	0.1	0.3	0.4	0.4	0.4	0.4	0.4
Property	57.2	45.9	39.1	35.0	34.7	35.4	38.6	37.8	37.5	38.6	34.9	33.4	35.0	34.0	35.6	35.6	35.6	35.6
Sex	6.4	7.3	7.0	7.5	7.8	8.0	10.1	8.7	8.3	8.1	5.8	7.9	7.0	6.9	7.5	7.5	7.5	7.5
Total	127.2	116.3	115.1	103.3	111.1	111.1	125.1	119.1	129.1	128.1	130.1	123.1	126.1	118.1	120.6	120.6	120.6	120.6
	2	3	9	4	2	5	4	4	7	7	1	9	4	9	6	6	6	6

### Court Commitment Rates for Females to Probation. FAC elected to use a rate of 19.0 for Drug crimes.

Crime Group	Year																	
	1997	1998	1999	2000	2001	2002	2003	2004	2005	2006	2007	2008	2009	2010	2011	2012	2013	2014
Alcohol	2.5	1.1	1.7	2.1	1.1	1.3	1.9	1.9	1.4	2.4	2.1	3.3	6.1	4.5	3.3	3.3	3.3	3.3
Assault	2.7	1.9	2.5	2.7	2.3	2.9	3.2	3.0	3.5	3.3	4.0	3.7	4.7	2.7	3.5	3.5	3.5	3.5
Drug	15.3	13.6	16.5	17.8	18.7	18.7	20.0	23.3	25.2	28.8	23.1	18.8	16.2	16.3	19.0	19.0	19.0	19.0
Murder & Man	0.3	0.1	0.2	0.1	0.1	0.1	0.0	0.1	0.3	0.0	0.1	0.1	0.3	0.0	0.1	0.1	0.1	0.1
Property	27.2	21.8	17.1	15.7	16.4	18.7	21.8	21.3	21.1	21.3	19.3	16.7	18.1	16.4	18.8	18.8	18.8	18.8
Sex	0.3	0.2	0.3	0.3	0.2	0.3	0.4	0.3	0.5	0.3	0.1	0.1	0.3	0.1	0.2	0.2	0.2	0.2
Total	48.3	38.6	38.3	38.7	38.9	42.0	47.4	50.0	52.0	56.2	48.9	42.7	45.8	40.0	45.0	45.0	45.0	45.0

### Court Commitment Rates for Males to Rider. FAC elected to use a rate of 7.5 for Alcohol crimes and 10.0 for Property crimes.

Crime Group	Year																	
	1997	1998	1999	2000	2001	2002	2003	2004	2005	2006	2007	2008	2009	2010	2011	2012	2013	2014
Alcohol	4.4	2.7	3.7	3.3	3.4	3.8	4.4	3.7	3.7	3.5	5.6	7.5	7.9	7.7	7.5	7.5	7.5	7.5
Assault	6.9	6.9	9.0	7.8	9.2	9.7	9.2	9.6	10.2	12.5	12.4	11.5	12.7	13.3	11.8	11.8	11.8	11.8
Drug	9.9	8.5	10.3	12.3	13.6	11.2	12.4	16.6	14.7	16.9	13.9	12.1	8.3	10.6	12.5	12.5	12.5	12.5
Murder & Man	0.6	0.5	0.2	0.2	0.2	0.4	0.0	0.3	0.0	0.1	0.2	0.2	0.5	0.2	0.2	0.2	0.2	0.2
Property	15.2	14.7	14.2	14.3	11.9	13.8	12.3	14.6	12.8	13.6	12.6	10.4	10.7	8.6	10.0	10.0	10.0	10.0
Sex	7.9	6.6	4.9	3.8	5.5	5.2	5.7	5.3	4.9	4.9	5.5	5.2	4.9	5.4	5.2	5.2	5.2	5.2
Total	44.9	40.0	42.3	41.7	43.8	44.1	44.0	50.2	46.5	51.5	50.2	46.8	45.0	45.7	47.2	47.2	47.2	47.2

## Appendix 7 Continued, Historical Court Commitment Rates with Calculated GWA by Gender Status and Crime

### Court Commitment Rates for Females to Rider. FAC elected to use GWA rates for all crimes for the 2010 Forecast.

Crime Group	Year														2011	2012	2013	2014
	1997	1998	1999	2000	2001	2002	2003	2004	2005	2006	2007	2008	2009	2010				
Alcohol	0.6	0.2	0.5	0.7	0.7	0.6	0.8	0.5	0.5	0.8	0.6	0.9	1.3	1.5	1.0	1.0	1.0	1.0
Assault	1.0	0.5	0.8	0.7	0.4	0.9	1.1	1.1	1.4	1.3	1.1	0.9	1.3	1.9	1.3	1.3	1.3	1.3
Drug	3.7	3.0	4.2	5.0	5.4	4.5	4.6	5.9	6.6	7.6	5.5	4.3	4.1	3.8	5.0	5.0	5.0	5.0
Murder & Man	0.0	0.0	0.1	0.1	0.0	0.1	0.1	0.1	0.0	0.1	0.1	0.1	0.0	0.1	0.0	0.0	0.0	0.0
Property	3.2	3.2	4.5	3.5	3.6	3.5	4.8	4.9	5.0	5.4	4.6	3.1	3.7	3.0	4.0	4.0	4.0	4.0
Sex	0.2	0.2	0.2	0.1	0.0	0.1	0.1	0.1	0.1	0.1	0.2	0.3	0.2	0.5	0.2	0.2	0.2	0.2
Total	8.6	7.3	10.3	10.2	10.1	9.8	11.5	12.5	13.6	15.2	12.1	9.6	10.7	10.7	11.6	11.6	11.6	11.6

### Court Commitment Rates for Males to Term. FAC elected to use a rate of 8.5 for Drug crimes.

Crime Group	Year														2011	2012	2013	2014
	1997	1998	1999	2000	2001	2002	2003	2004	2005	2006	2007	2008	2009	2010				
Alcohol	2.7	1.7	2.3	3.4	3.9	3.3	3.2	2.6	3.0	3.8	3.4	3.4	3.9	3.4	3.4	3.4	3.4	3.4
Assault	5.3	6.4	7.1	8.2	7.2	6.6	7.2	6.9	7.9	10.5	7.9	7.2	5.8	7.1	7.4	7.4	7.4	7.4
Drug	8.5	9.7	11.7	12.5	15.4	12.8	14.4	12.3	11.3	13.8	11.8	9.2	8.0	8.0	8.5	8.5	8.5	8.5
Murder & Man	2.4	2.3	2.5	1.9	1.7	1.1	2.0	1.7	1.3	1.9	1.9	1.4	1.4	1.3	1.5	1.5	1.5	1.5
Property	9.0	6.2	7.9	7.1	7.3	6.7	6.9	7.8	6.0	6.3	5.8	4.5	4.2	4.0	5.4	5.4	5.4	5.4
Sex	4.5	2.8	5.7	7.1	5.5	6.8	6.9	7.3	7.0	7.1	8.2	6.4	7.0	6.5	7.0	7.0	7.0	7.0
Total	32.5	29.0	37.1	40.3	41.1	37.3	40.6	38.6	36.5	43.4	39.0	32.1	30.3	30.2	33.2	33.2	33.2	33.2

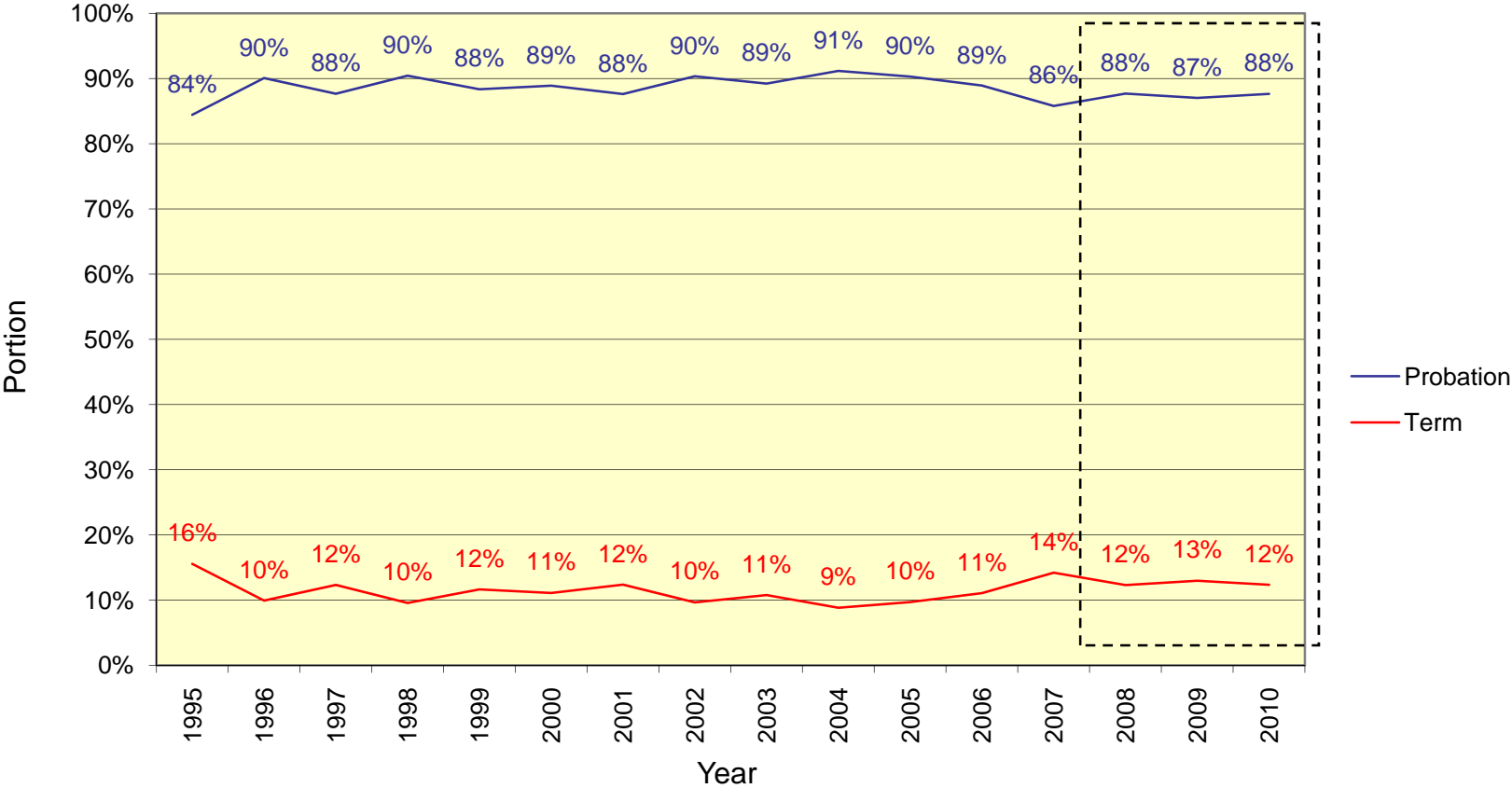
### Court Commitment Rates for Females to Term. FAC elected to use GWA rates for all crimes for the 2010 Forecast.

Crime Group	Year														2011	2012	2013	2014
	1997	1998	1999	2000	2001	2002	2003	2004	2005	2006	2007	2008	2009	2010				
Alcohol	0.2	0.1	0.2	0.1	0.2	0.4	0.1	0.1	0.1	0.1	0.5	0.1	0.2	0.2	0.2	0.2	0.2	0.2
Assault	0.2	0.1	0.2	0.1	0.9	0.5	0.4	0.4	1.0	0.6	0.4	0.6	0.6	0.4	0.5	0.5	0.5	0.5
Drug	0.9	0.7	0.8	1.9	1.9	1.7	2.1	2.1	1.9	1.9	1.5	1.0	0.7	1.1	1.4	1.4	1.4	1.4
Murder & Man	0.2	0.2	0.3	0.4	0.4	0.3	0.1	0.1	0.1	0.4	0.1	0.4	0.1	0.1	0.2	0.2	0.2	0.2
Property	0.6	0.6	1.4	0.3	1.5	1.3	1.2	1.2	1.0	0.7	0.8	0.6	1.1	0.8	0.9	0.9	0.9	0.9
Sex	0.0	0.1	0.0	0.2	0.1	0.0	0.0	0.1	0.3	0.1	0.1	0.2	0.1	0.3	0.2	0.2	0.2	0.2
Total	2.1	1.8	2.8	2.9	5.1	4.3	3.9	4.0	4.3	3.8	3.4	3.1	2.9	2.8	3.4	3.4	3.4	3.4

# Appendix 8: Status Change Rates and Lengths of Stay

The FAC selected recent historical periods to calculate status change rates and their associated lengths of stay. A recent stable period for either the status change rate or the length of stay is considered a sufficient reason to select a period. That period is then used to calculate both status change rate and the length of stay for the forecast period. The chart below illustrates the method using Rider releases as an example. For Rider releases, the FAC selected the period FY 2008 through 2010.

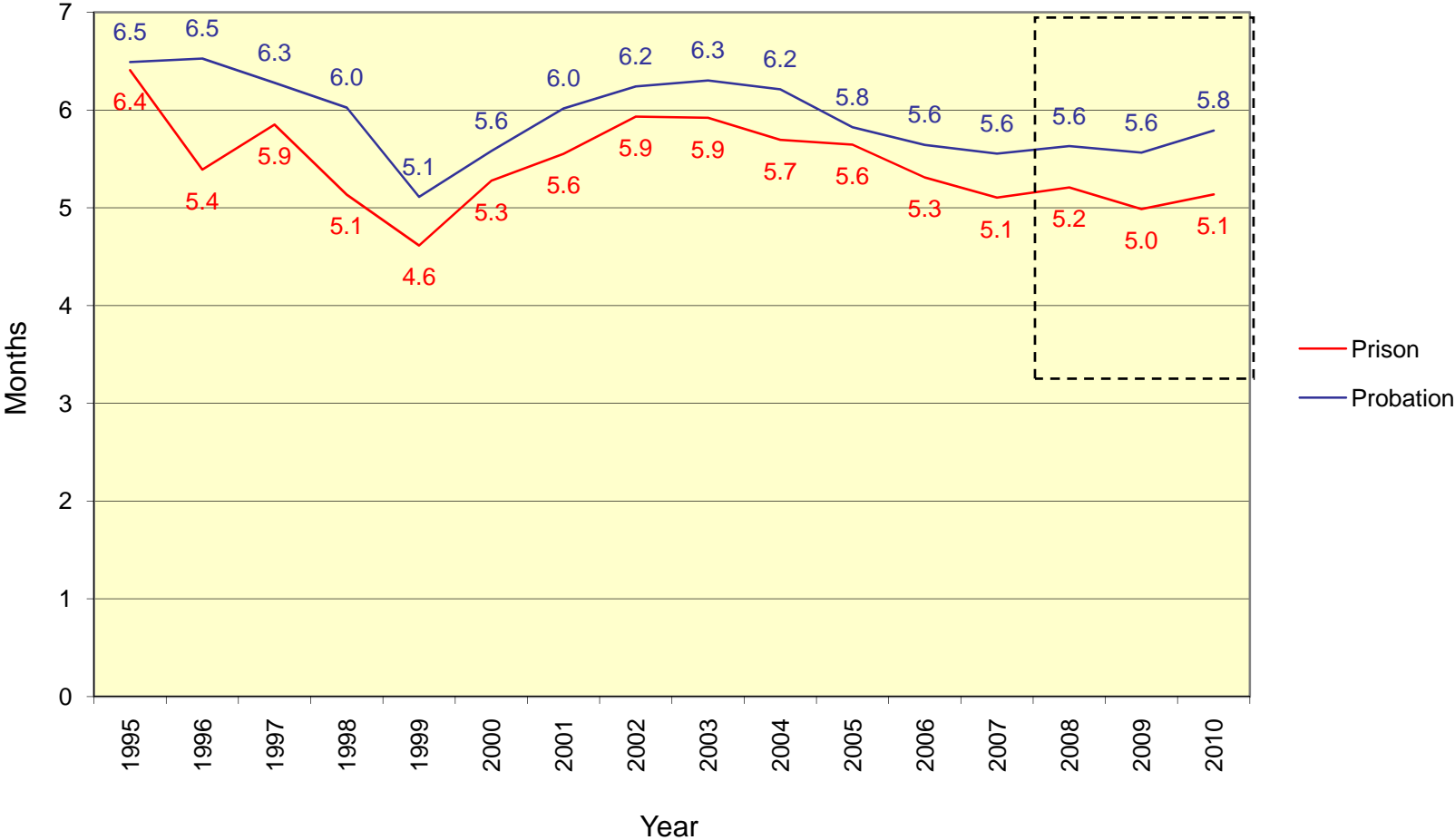
## Historical Rider Releases



Data represents historical releases from offenders' first commitment to Rider

The chart below shows the Rider length of stay example. The period FY 2008 through 2010 was chosen because it represents a relatively stable period for length of stay and it is consistent with the status change rates observed in the previous chart. Staff used this period to calculate both the status change rates and the lengths of stay for each cohort.

### Historical Rider Length of Stay Prior to Release





## Appendix 9: Definitions

Admission – 1. An offender who has been committed by the courts to the Idaho Department of Correction (IDOC). The offender may enter the department's jurisdiction in Probation, Rider, or Term status. 2. A change from one status to another. For example a status change from Probation or Rider to Term is typically referred to as an admission to Term.

Bed Offender - An offender in Term, Rider, or Parole Violator status, under the jurisdiction of IDOC, incarcerated in a state institution or other facility, for which the department pays the cost of incarceration on a per diem basis.

Caseload Offender - An offender in Probation or Parole status under the jurisdiction of IDOC who is actively supervised by Community Corrections.

Civil Commitment - A form of confinement for offenders who are mentally ill, incompetent, alcoholic, or drug addicted, as contrasted with the criminal commitment for their offense. Since they represent a per diem obligation to IDOC they are grouped with Term offenders.

Court Commitment – An action of the courts whereby an offender is convicted and sentenced to supervision or incarceration by IDOC. The offender may enter the department's jurisdiction in Probation, Rider, or Term status.

Discharged Offender –An offender whose court commitment is satisfied or who dies while under the jurisdiction of IDOC. Offenders may be discharged from Probation, Rider, Term, Parole, or Parole Violator status.

Failed Rider – An offender who was committed by the courts to the Rider program but whom the court decided to incarcerate in prison upon completion of the program. The offender's status will change to Term.

Incarcerated - An offender who has been committed by the courts to an IDOC institution. Riders, Term offenders, and Parole Violators are considered incarcerated.

New Commitment - An offender who has been committed by the courts to IDOC for the first time or who has been committed for a new crime after satisfying a previous court commitment. They may enter in Probation, Rider, or Term status.

Non-Bed Offender - An offender who is under the jurisdiction of IDOC but who is not housed in a state institution or other facility for which the department pays the cost of incarceration on a per diem basis. They could be in a county testifying, on detainer to another governmental entity, an escapee, or in record-tracking status.

Non-Caseload Offender - An offender who has been placed on Probation or Parole status but who is not actively supervised by Community Corrections. They may have been deported, placed under court supervision, on detainer, or on a bench warrant. They will be kept on Community Corrections records, until their sentence is satisfied.

Non-Idaho Offender - An offender who is sentenced by a jurisdiction other than Idaho but who is housed by IDOC for security reasons. Since they represent a per diem obligation to the Department they are grouped with Term offenders.

Offender – A person under the legal care, custody, supervision, or authority of the Board of Correction, including any person within or outside the state pursuant to agreement with another governmental entity or contractor.

Parole Violator - An offender who has been placed on Parole and who then violates the conditions of their parole. Parole Violator status is usually a temporary status until a hearing can be conducted to determine if the offender will be returned to Term or Parole status. It is considered an incarcerated status.

Paroled Offender - An offender whom the parole commission has decided to release from incarceration after having served a portion of their sentence. They are supervised by a Parole Officer until their court commitment is satisfied. The offender is referred to as a Parolee.

Probation - The status of an offender whom the courts have decided to allow to serve their sentence while living in society. They are not incarcerated but are supervised by a Probation Officer until their sentence is satisfied. The offender is referred to as a Probationer.

Reinstated Parole – The action that results when an offender has violated their parole but the Parole Commission subsequently decides to reinstate them to Parole status rather than returning them to prison.

Retained Jurisdiction – The status of an offender whom the courts have decided to send to the Rider program. The courts retain jurisdiction until the offender completes the program. The courts will subsequently determine whether to place the offender in Probation or Term status or to withhold judgement. Also referred to as Rider.

Revoked Parole – The condition resulting when an offender who, while on parole, violates the conditions of their parole and is placed back in prison by the Parole Commission. When an offender revokes parole they again become a Termer.

Revoked Probation - The condition resulting when an offender who, while serving probation, violates the conditions of their probation and the court changes their sentence to incarceration. The offender's status changes from Probation to Term.

Rider – see Retained Jurisdiction.

Term – The status of an offender whom the courts or the Parole Commission has committed to prison. The offender is referred to as an inmate or a Termer.

This document is intended to be distributed in electronic form

For Inquiries regarding this document contact:

Tony Grange  
Review and Analysis  
Idaho Department of Correction  
1299 North Orchard Street  
Boise, Idaho 83720  
Phone (208) 658-2148  
E-mail [agrange@idoc.idaho.gov](mailto:agrange@idoc.idaho.gov)