

# IDAHO DEPARTMENT OF CORRECTION

## STANDARD REPORT



Photo courtesy Warden Chad Page, SICI

## DECEMBER 2016

The Idaho Department of Correction Standard Report: December 2016 Snapshot contains a monthly overview of incarceration and community supervision offenders.



# TABLE CONTENTS

## Section 1: Incarceration Overview

- 1.1 Admissions and Releases Page 3
- 1.2 Monthly Population Change Page 4
- 1.3 By Crime Group Page 4
- 1.4 By Institution and Legal Status Page 5-6
- 1.5 By Demographics Page 7

## Section 2: Community Corrections Overview

- 2.1 Admissions and Releases Page 8
- 2.2 Monthly Population Change Page 9
- 2.3 By Crime Group Page 9
- 2.4 By District and Legal Status Page 10
- 2.5 By Demographics Page 10-11

## Section 3: Terms and Definitions

- 3.1 Glossary Page 12-13

# SECTION 1: INCARCERATION OVERVIEW

## 1.1 Admissions and Releases

Incarcerated Offender Admissions	Termer	Rider	Parole Violator	Total
<b>Beginning Count as of December 1, 2016</b>	<b>6009</b>	<b>1331</b>	<b>572</b>	<b>7912</b>
New Commitments	36	79	0	115
Revoked Probation	52	89	0	141
Revoked Parole	43	0	0	43
Failed Rider	12	0	0	12
Violated Parole	0	0	177	177
From Other Status	0	0	0	0
<b>Total</b>	<b>143</b>	<b>168</b>	<b>177</b>	<b>488</b>

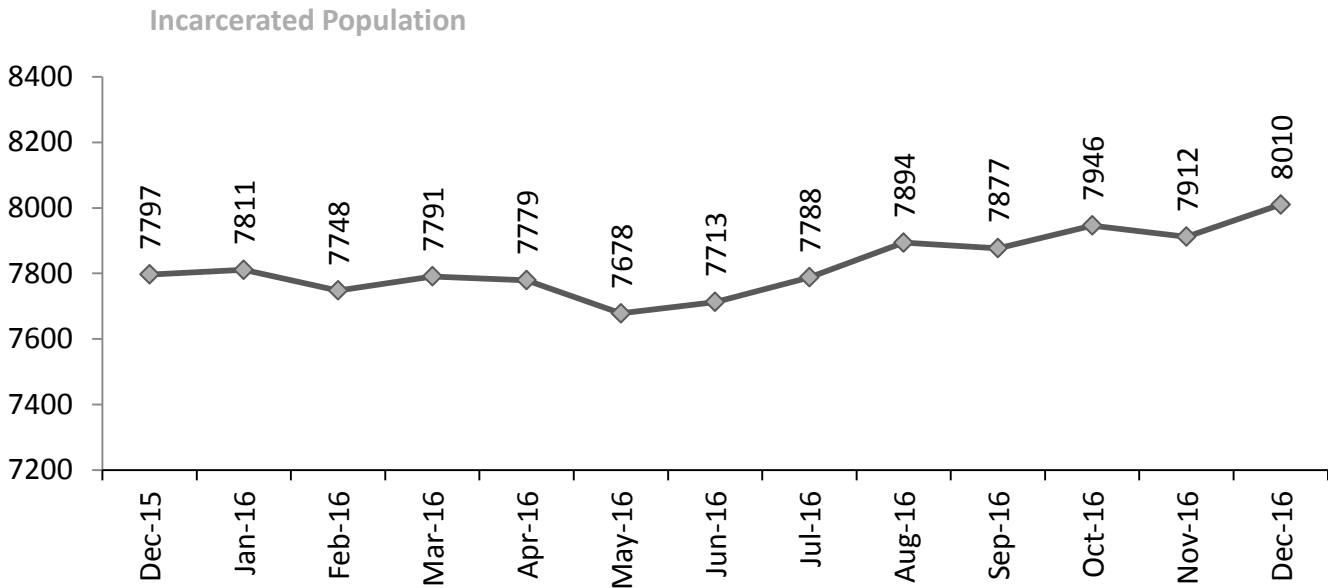
Incarcerated Offender Releases	Termer	Rider	Parole Violator	Total
To Parole	117	0	87	204
To Probation	4	163	0	167
To Retained Jurisdiction (Rider)	0	0	0	0
To Term Incarceration	0	12	43	55
To Other Status	0	2	0	2
Discharged	42	1	1	44
<b>Total</b>	<b>163</b>	<b>178</b>	<b>131</b>	<b>472</b>

Net Admissions/Releases	Termer	Rider	Parole Violator	Total
<b>Net Admissions/Releases</b>	<b>-20</b>	<b>-10</b>	<b>46</b>	<b>16</b>
Ending Count	5989	1321	618	7928
Offenders in Transition*	31	64	-13	82
<b>Net Ending Count as of January 1, 2017</b>	<b>6020</b>	<b>1385</b>	<b>605</b>	<b>8010</b>

Note: Admission and release counts are reflective as of date the data was pulled for this report (02/15/2017).

\*Offenders in Transition is an inherent "lag time" in offender movement that may take a few days to be reflected in the data offender management system.

## 1.2 Monthly Population Change



## 1.3 Distribution by Crime Group

Crime Group	Term	% Term	Rider	% Rider	Violator	% Violator	Total	% Total
Murder/ Man	454	7.5%	1	0.1%	3	0.5%	458	5.7%
Sex	1474	24.5%	73	5.3%	68	11.2%	1615	20.2%
Assault	1639	27.2%	295	21.3%	184	30.4%	2118	26.4%
Property	1153	19.2%	392	28.3%	177	29.3%	1722	21.5%
Alcohol	241	4.0%	94	6.8%	33	5.5%	368	4.6%
Drug	1053	17.5%	525	37.9%	140	23.1%	1718	21.4%
Pending*	6	0.1%	5	0.4%	0	0.0%	11	0.1%
<b>Total</b>	<b>6020</b>	<b>100%</b>	<b>1385</b>	<b>100%</b>	<b>605</b>	<b>100%</b>	<b>8010</b>	<b>100%</b>
Percentage	75.2%		17.3%		7.6%		100%	

\*Pending count reflects the incarcerated offenders waiting to be adjudicated for a new crime or the data has not yet been updated in the data management system.

## 1.4 Distribution by Institution and Legal Status

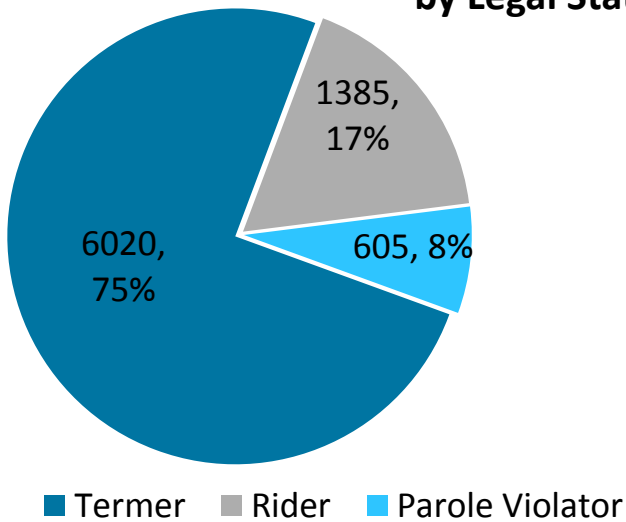
Institutions	Term	Rider	Violator	Total	% Total
<b>IMSI (Male Offenders):</b> Idaho Maximum Security Institution	533	0	4	537	6.7%
<b>ISCI (Male Offenders):</b> Idaho State Correctional Institution	1202	143	123	1468	18.3%
<b>SICI (Male Offenders):</b> South Idaho Correctional Institution	563	0	2	565	7.1%
<b>ICIO (Male Offenders):</b> Idaho Correctional Institution – Orofino	411	16	0	427	5.3%
<b>NICI (Male Offenders):</b> North Idaho Correctional Institution	0	399	0	399	5.0%
<b>SAWC (Male Offenders):</b> St. Anthony Work Camp	240	0	0	240	3.0%
<b>ISCC (Male Offenders):</b> Idaho State Correctional Center	2030	0	77	2107	26.3%
<b>SBWCC (Female Offenders):</b> South Boise Women’s Correctional Center	111	158	15	284	3.5%
<b>CAPP (Contract - Male Offenders):</b> Correctional Alternative Placement Program	6	414	0	420	5.2%
<b>PRC-SICI (Female Riders):</b> Pre-Release Center	1	101	0	102	1.3%
<b>PWCC (Female Offenders):</b> Pocatello Women’s Correctional Center	235	64	8	307	3.8%
Reentry Centers	Term	Rider	Violator	Total	% Total
<b>CRC Nampa (Male Offenders):</b> Community Reentry Center	82	0	2	84	1.0%
<b>CRC Idaho Falls (Male Offenders):</b> Community Reentry Center	83	0	0	83	1.0%
<b>CRC Treasure Valley (Male Offenders):</b> Community Reentry Center	99	0	1	100	1.2%
<b>CRC East Boise (Female Offenders):</b> Community Reentry Center	95	0	4	99	1.2%

Contract Beds	Term	Rider	Violator	Total	% Total
<b>Bonneville Contract</b> (Contract – County Jail): Bonneville Contract Beds	42	5	37	84	1.0%

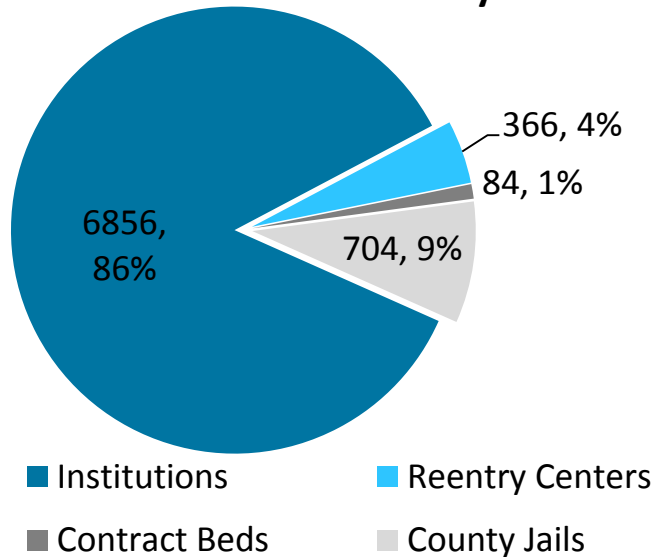
County Jails	Term	Rider	Violator	Total	% Total
<b>County Jails</b>	287	85	332	704	8.8%

Total Distribution By Institution and Legal Status	Term	Rider	Violator	Total	% Total
<b>Total</b> (By Institution & Legal Status): Institutions + Contract Beds + Reentry Centers + County Jails	6020	1385	605	8010	100%

**Incarcerated Population  
by Legal Status**



**Incarcerated Population  
by Institution**



## 1.5 Distribution by Demographics

Age Range	Term	% Term	Rider	% Rider	Violator	% Violator	Total	% Total
Under 18	0	0.0%	0	0.0%	0	0.0%	0	0.0%
18-24	620	10.3%	353	25.5%	33	5.5%	1006	12.6%
25-34	1946	32.3%	548	39.6%	266	44.0%	2760	34.5%
35-44	1611	26.8%	292	21.1%	180	29.8%	2083	26.0%
45-54	1057	17.6%	151	10.9%	92	15.2%	1300	16.2%
55-64	575	9.6%	37	2.7%	33	5.5%	645	8.1%
Ages 65+	211	3.5%	4	0.3%	1	0.2%	216	2.7%
<b>Total</b>	<b>6020</b>	<b>100%</b>	<b>1385</b>	<b>100%</b>	<b>605</b>	<b>100%</b>	<b>8010</b>	<b>100%</b>

Ethnicity	Term	% Term	Rider	% Rider	Violator	% Violator	Total	% Total
Asian	22	0.4%	6	0.4%	2	0.3%	30	0.4%
Black	160	2.7%	27	1.9%	26	4.3%	213	2.7%
Hispanic	1024	17.0%	167	12.1%	72	11.9%	1263	15.8%
Indian	218	3.6%	54	3.9%	27	4.5%	299	3.7%
Other	57	0.9%	11	0.8%	7	1.2%	75	0.9%
Unknown	79	1.3%	32	2.3%	3	0.5%	114	1.4%
White	4460	74.1%	1088	78.6%	468	77.4%	6016	75.1%
<b>Total</b>	<b>6020</b>	<b>100%</b>	<b>1385</b>	<b>100%</b>	<b>605</b>	<b>100%</b>	<b>8010</b>	<b>100%</b>

Gender	Term	% Term	Rider	% Rider	Violator	% Violator	Total	% Total
Females	553	9.2%	365	26.4%	77	12.7%	995	12.4%
Males	5467	90.8%	1020	73.6%	528	87.3%	7015	87.6%
<b>Total</b>	<b>6020</b>	<b>100%</b>	<b>1385</b>	<b>100%</b>	<b>605</b>	<b>100%</b>	<b>8010</b>	<b>100%</b>

# SECTION 2: COMMUNITY OVERVIEW

## 2.1 Admissions and Releases

Community Offender Admissions	Parole	Probation	Total
<b>Beginning Count as of December 1, 2016</b>	<b>4248</b>	<b>11020</b>	<b>15268</b>
New Commitments	1	264	265
Successful Rider	0	163	163
Paroled (New)	117	0	117
Reinstated Parole	87	0	87
From Other Status	0	9	9
<b>Total</b>	<b>2015</b>	<b>436</b>	<b>641</b>

Community Offender Releases	Parole	Probation	Total
To Probation or Parole	0	5	5
To Parole Violator	185	0	185
To Retained Jurisdiction (Rider)	0	89	89
To Term Incarceration	0	52	52
Discharged	65	201	266
<b>Total</b>	<b>250</b>	<b>347</b>	<b>597</b>

Net Admissions/Releases	Parole	Probation	Total
<b>Net Admissions/Releases</b>	<b>-45</b>	<b>89</b>	<b>44</b>
Gross Ending District Count	4203	11109	15312
Offenders in Transition*	-127	-18	-145
<b>Net Ending District Count</b>	<b>4076</b>	<b>11091</b>	<b>15167</b>
Interstate Compact **	556	1264	1820
<b>Net Ending Count as of January 1, 2017</b> (including Interstate Compact)	<b>4632</b>	<b>12355</b>	<b>16987</b>

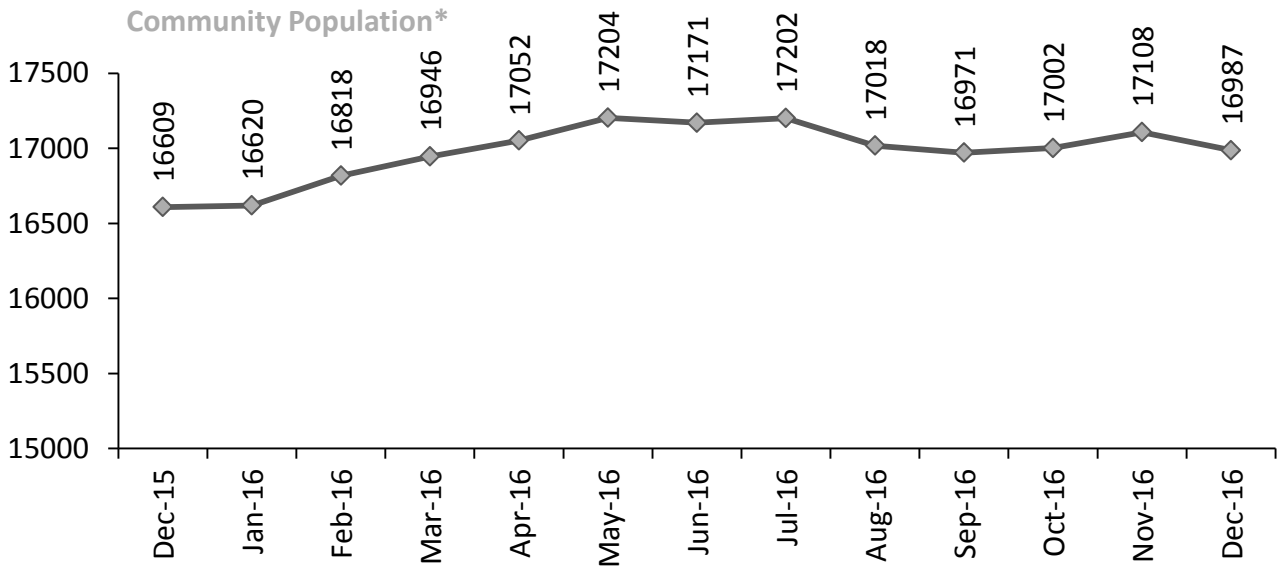
Note: Admission and release counts are reflective as of date the data was pulled for this report (02/15/2017).

\*Offenders in Transition is an inherent "lag time" in offender movement that may take a few days to be reflected in the data offender management system.

\*\*Interstate Compact represents Idaho probationers and parolees who are completing their sentence in another state, but are monitored by Idaho.



## 2.2 Monthly Population Change



## 2.3 Distribution by Crime Group

Crime Group	Probation	% Probation	Parole	% Parole	Total	% Total
Murder/ Man	54	0.4%	140	3.0%	194	1.1%
Sex	692	5.6%	807	17.4%	1499	8.8%
Assault	2167	17.5%	1141	24.6%	3308	19.5%
Property	3380	27.4%	1208	26.1%	4588	27.0%
Alcohol	1673	13.5%	309	6.7%	1982	11.7%
Drug	4180	33.8%	1027	22.2%	5207	30.7%
Pending**	209	1.7%	0	0.0%	209	1.2%
<b>Total</b>	<b>12355</b>	<b>100%</b>	<b>4632</b>	<b>100%</b>	<b>16987</b>	<b>100%</b>
Percentage	72.7%		27.3%		100%	

\*Monthly Community Population Change reflects the ending caseload including Interstate Compact offenders.

\*\*Pending Count reflects the community offenders that have not yet been adjudicated or the data has not yet been updated in the data management system.

## 2.4 Distribution by District and Legal Status

District/Legal Status	Probation	% Probation	Parole	% Parole	Total	% Total
<b>District 0:</b> Limited Supervision Unit	1620	13.1%	659	14.2%	2279	13.4%
<b>District 1:</b> Coeur d'Alene	1492	12.1%	235	5.1%	1727	10.2%
<b>District 2:</b> Lewiston	515	4.2%	109	2.4%	624	3.7%
<b>District 3:</b> Caldwell	1946	15.8%	637	13.8%	2583	15.2%
<b>District 4:</b> Boise	2411	19.5%	1484	32.0%	3895	22.9%
<b>District 5:</b> Twin Falls	1241	10.0%	446	9.6%	1687	9.9%
<b>District 6:</b> Pocatello	795	6.4%	154	3.3%	949	5.6%
<b>District 7:</b> Idaho Falls	1071	8.7%	352	7.6%	1423	8.4%
+ Interstate Compact	1264	10.2%	556	12.0%	1820	10.7%
<b>Total</b>	<b>12355</b>	<b>100%</b>	<b>4632</b>	<b>100%</b>	<b>16987</b>	<b>100%</b>

## 2.5 Distribution by Demographics

Age Distribution	Probation	% Probation	Parole	% Parole	Total	% Total
Under 18	1	0.0%	0	0.0%	1	0.0%
Ages 18-24	1756	14.2%	161	3.5%	1917	11.3%
Ages 25-34	4501	36.4%	1445	31.2%	5946	35.0%
Ages 35-44	3157	25.6%	1361	29.4%	4518	26.6%
Ages 45-54	1892	15.3%	1026	22.2%	2918	17.2%
Ages 55-64	862	7.0%	519	11.2%	1381	8.1%
Ages 65+	186	1.5%	120	2.6%	306	1.8%
<b>Total</b>	<b>12355</b>	<b>100%</b>	<b>4632</b>	<b>100%</b>	<b>16987</b>	<b>100%</b>

Ethnicity Distribution	Probation	% Probation	Parole	% Parole	Total	% Total
Asian	70	0.6%	36	0.8%	106	0.6%
Black	233	1.9%	149	3.2%	382	2.2%
Hispanic	1312	10.6%	554	12.0%	1866	11.0%
Indian	290	2.3%	117	2.5%	407	2.4%
Other	101	0.8%	45	1.0%	146	0.9%
Unknown	1347	10.9%	66	1.4%	1413	8.3%
White	9002	72.9%	3665	79.1%	12667	74.6%
<b>Total</b>	<b>12355</b>	<b>100%</b>	<b>4632</b>	<b>100%</b>	<b>16987</b>	<b>100%</b>

Gender Distribution	Probation	% Probation	Parole	% Parole	Total	% Total
Females	3658	29.6%	765	16.5%	4423	26.0%
Males	8697	70.4%	3867	83.5%	12564	74.0%
<b>Total</b>	<b>12355</b>	<b>100%</b>	<b>4632</b>	<b>100%</b>	<b>16987</b>	<b>100%</b>

## 3.1 Glossary

1. **Admission:** An offender who has been committed by the courts to the Idaho Department of Correction. The offender may enter the department's jurisdiction in Probation, Rider, or Term Status. A subsequent change from Probation or Rider to Term is also typically referred to as an admission to Term.
2. **Civil Commitment:** A form of confinement for offenders who are mentally ill, incompetent, alcohol or drug addicted, as contrasted with the criminal commitment for their sentence. Since they represent a per diem obligation to the Idaho Department of Correction, they are grouped with Term offenders.
3. **Discharged Offender:** Offenders whose court commitment is satisfied or who die while under the jurisdiction of the Idaho Department of Correction. Offenders may be discharged from Parole, Probation, Rider, Term or Parole Violator status.
4. **Incarcerated:** Offenders whose court commitment is satisfied or who die while under the jurisdiction of the Idaho Department of Correction. Offenders may be discharged from Parole, Probation, Rider, Term or Parole Violator status.
5. **New Commitment:** An offender who has been committed by the courts to the Idaho Department of Correction for the first time or after satisfying a previous court commitment has been committed for a new crime. They may enter a Probation, Rider, or Term status.
6. **Non-Idaho Offender:** An offender who is sentenced by a jurisdiction other than Idaho, but is housed by the Idaho Department of Correction for security reasons. Since they represent a per diem obligation to the Idaho Department of Correction, they are grouped with Term offenders.
7. **Parole Violator:** An offender who has been placed on parole and then violates the conditions of their parole. Parole Violator status is usually temporary status until a hearing can be conducted to determine if the offender will be returned to Term or Parole status.

8. **Paroled Offender:** An offender that the parole commission has decided to place in society after serving a portion of their sentence. They are supervised by a Parole Officer for the remainder of their court commitment. The offender's status is changed from Term to Parole.
9. **Probation:** An offender that the courts have decided to allow to service their sentence while living in society. They are not incarcerated, but are supervised by a Probation Officer until their court commitment is satisfied.
10. **Reinstated Parole:** An offender who violated their parole and the Parole Commission subsequently decided to reinstate them in Parole status instead of returning them to prison.
11. **Revoked Parole:** An offender who, while on parole, violates the conditions of their parole and is placed back in prison by the Parole Commission. Their status changes back to Term.
12. **Revoked Probation:** An offender who, while serving probation, violates the conditions of their probation and the court changes their sentence to incarceration. The offender's status changes from Probation to Term, or sometimes Rider.
13. **Retained Jurisdiction/Rider Incarcerated (Rider):** An offender committed to an Idaho Department of Correction Rider program. The courts will retain jurisdiction of this offender until the completion of the Rider program. The courts will subsequently determine whether to place this offender on Probation or Term status or to withhold judgment.
14. **Term:** An offender who the courts or the Parole Commission has committed to one of the state prisons.

## Questions?

Vicky Calderón, Principal Research Analyst

Idaho Department of Correction

Evaluation and Compliance

P: 208.658.2147 E: [mcaldero@idoc.idaho.gov](mailto:mcaldero@idoc.idaho.gov)