

# IDAHO DEPARTMENT OF CORRECTION

## STANDARD REPORT



MAY 2015

The Idaho Department of Correction Standard Report: May 2015 Snapshot contains a monthly overview of incarceration and community supervision offenders.



Revised March 2016

Revisions made to: Section 2.1 Admissions and Releases

# TABLE *of* CONTENTS

## Section 1: Incarceration Overview

- 1.1 Admissions and Releases Page 3
- 1.2 Monthly Population Change Page 4
- 1.3 By Crime Group Page 4
- 1.4 By Institution and Legal Status Page 5-6
- 1.5 By Demographics Page 7

## Section 2: Community Corrections Overview

- 2.1 Admissions and Releases Page 8
- 2.2 Monthly Population Change Page 9
- 2.3 By Crime Group Page 9
- 2.4 By District and Legal Status Page 10
- 2.5 By Demographics Page 10-11

## Section 3: Terms and Definitions

- 3.1 Glossary Page 12-13

# SECTION 1: INCARCERATION OVERVIEW

## 1.1 Admissions and Releases

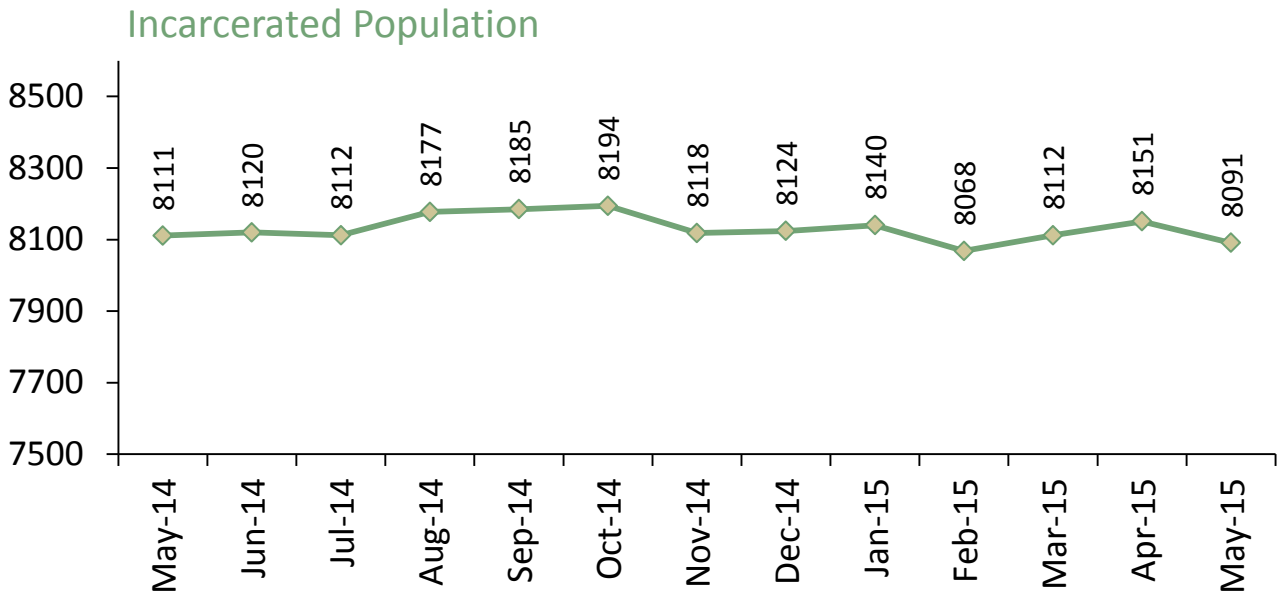
Incarcerated Offender Admissions	Termer	Rider	Parole Violator	Total
<b>Beginning Count as of May 1, 2015</b>	<b>6559</b>	<b>1148</b>	<b>444</b>	<b>8151</b>
New Commitments	49	79	0	128
Revoked Probation	42	99	0	141
Revoked Parole	42	0	0	42
Failed Rider	33	0	0	33
Violated Parole	0	0	97	97
From Other Status	0	2	0	2
<b>Total</b>	<b>166</b>	<b>180</b>	<b>97</b>	<b>443</b>

Incarcerated Offender Releases	Termer	Rider	Parole Violator	Total
To Parole	154	0	34	188
To Probation	1	159	0	160
To Retained Jurisdiction (Rider)	0	0	0	0
To Term Incarceration	0	33	42	75
To Other Status	0	0	2	2
Discharged	37	0	1	38
<b>Total</b>	<b>192</b>	<b>192</b>	<b>79</b>	<b>463</b>

Net Admissions/Releases	Termer	Rider	Parole Violator	Total
<b>Net Admissions/Releases</b>	<b>-26</b>	<b>-12</b>	<b>18</b>	<b>-20</b>
Ending Count	6533	1136	462	8131
Offenders in Transition*	18	-9	-49	-40
<b>Net Ending Count as of June 1, 2015</b>	<b>6551</b>	<b>1127</b>	<b>413</b>	<b>8091</b>

\*Offenders in Transition is an inherent "lag time" in offender movement that may take a few days to be reflected in the data offender management system.

## 1.2 Monthly Population Change



## 1.3 Distribution by Crime Group

Crime Group	Term	% Term	Rider	% Rider	Violator	% Violator	Total	% Total
Murder/Man	392	6.0%	3	0.3%	1	0.2%	396	4.9%
Sex	1427	21.8%	71	6.3%	52	12.6%	1550	19.2%
Assault	1395	21.3%	207	18.4%	87	21.1%	1689	20.9%
Property	1288	19.7%	284	25.2%	98	23.7%	1670	20.6%
Alcohol	1566	23.9%	434	38.5%	136	32.9%	2138	26.4%
Drug	475	7.3%	126	11.2%	39	9.4%	638	7.9%
Pending*	8	0.1%	2	0.2%	0	0.0%	10	0.1%
<b>Total</b>	<b>6551</b>	<b>100%</b>	<b>1127</b>	<b>100%</b>	<b>413</b>	<b>100%</b>	<b>8091</b>	<b>100%</b>
Percentage	81.0%		13.9%		5.1%		100%	

\*Pending count reflects the incarcerated offenders waiting to be adjudicated for a new crime or the data has not yet been updated in the data management system.

## 1.4 Distribution by Institution and Legal Status

Institutions	Term	Rider	Violator	Total	% Total
<b>IMSI (Male Offenders):</b> Idaho Maximum Security Institution	467	0	3	470	5.8%
<b>ISCI (Male Offenders):</b> Idaho State Correctional Institution	1283	87	62	1432	17.7%
<b>SICI (Male Offenders):</b> South Idaho Correctional Institution	552	0	0	552	6.8%
<b>ICIO (Male Offenders):</b> Idaho Correctional Institution – Orofino	559	9	0	568	7.0%
<b>NICI (Male Offenders):</b> North Idaho Correctional Institution	0	403	0	403	5.0%
<b>SAWC (Male Offenders):</b> St. Anthony Work Camp	245	0	1	246	3.0%
<b>ISCC (Male Offenders):</b> Idaho State Correctional Center	2034	0	101	2135	26.4%
<b>SBWCC (Female Offenders):</b> South Boise Women’s Correctional Center	91	164	17	272	3.4%
<b>CAPP (Contract - Male Offenders):</b> Correctional Alternative Placement Program	40	283	57	380	4.7%
<b>PRC-SICI (Female Riders):</b> Pre-Release Center	43	57	0	100	1.2%
<b>PRCC (Female Offenders):</b> Pocatello Women’s Correctional Center	252	39	17	308	3.8%

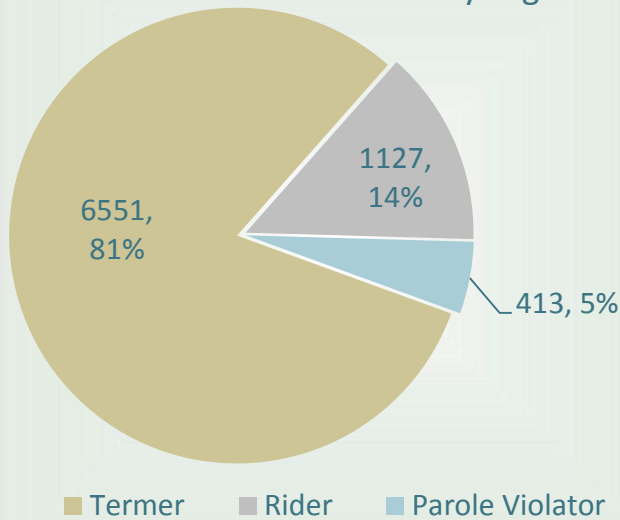
Reentry Centers	Term	Rider	Violator	Total	% Total
<b>CRC Nampa (Male Offenders):</b> Community Reentry Center	80	0	0	80	1.0%
<b>CRC Idaho Falls (Male Offenders):</b> Community Reentry Center	82	0	0	82	1.0%
<b>CRC Treasure Valley (Male Offenders):</b> Community Reentry Center	96	0	0	96	1.2%
<b>CRC East Boise (Female Offenders):</b> Community Reentry Center	94	0	0	94	1.2%

Contract Beds	Term	Rider	Violator	Total	% Total
<b>Kit Carson</b> (Contract - Male Offenders): Kit Carson Contract Beds	210	0	0	210	2.6%
<b>Bonneville Contract</b> (Contract – County Jail): Bonneville Contract Beds	94	0	0	94	1.2%

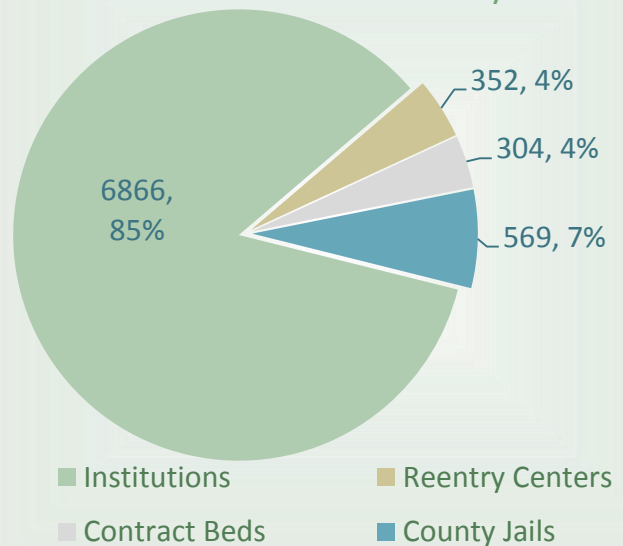
County Jails	Term	Rider	Violator	Total	% Total
<b>County Jails</b>	329	85	155	569	7.0%

Total Distribution By Institution and Legal Status	Term	Rider	Violator	Total	% Total
<b>Total</b> (By Institution & Legal Status): Institutions + Contract Beds + Reentry Centers + County Jails	6551	1127	413	8091	100%

Incarcerated Population  
by Legal Status



Incarcerated Population  
by Institution



## 1.5 Distribution by Demographics

Age Range	Term	% Term	Rider	% Rider	Violator	% Violator	Total	% Total
Under 18	0	0.0%	0	0.0%	0	0.0%	0	0.0%
Ages 18-24	722	11.0%	310	27.5%	33	8.0%	1065	13.2%
Ages 25-34	2160	33.0%	430	38.2%	169	40.9%	2759	34.1%
Ages 35-44	1691	25.8%	251	22.3%	134	32.4%	2076	25.7%
Ages 45-54	1220	18.6%	90	8.0%	60	14.5%	1370	16.9%
Ages 55-64	574	8.8%	40	3.5%	15	3.6%	629	7.8%
Ages 65+	184	2.8%	6	0.5%	2	0.5%	192	2.4%
<b>Total</b>	<b>6551</b>	<b>100%</b>	<b>1127</b>	<b>100%</b>	<b>413</b>	<b>100%</b>	<b>8091</b>	<b>100%</b>

Ethnicity	Term	% Term	Rider	% Rider	Violator	% Violator	Total	% Total
Asian	30	0.5%	3	0.3%	0	0.0%	33	0.4%
Black	188	2.9%	26	2.3%	7	1.7%	221	2.7%
Hispanic	986	15.1%	152	13.5%	57	13.8%	1195	14.8%
Indian	261	4.0%	36	3.2%	11	2.7%	308	3.8%
Other	68	1.0%	13	1.2%	3	0.7%	84	1.0%
Unknown	106	1.6%	25	2.2%	0	0.0%	131	1.6%
White	4912	75.0%	872	77.4%	335	81.1%	6119	75.6%
<b>Total</b>	<b>6551</b>	<b>100%</b>	<b>1127</b>	<b>100%</b>	<b>413</b>	<b>100%</b>	<b>8091</b>	<b>100%</b>

Gender	Term	% Term	Rider	% Rider	Violator	% Violator	Total	% Total
Females	654	10.0%	288	25.6%	61	14.8%	1003	12.4%
Males	5897	90.0%	839	74.4%	352	85.2%	7088	87.6%
<b>Total</b>	<b>6551</b>	<b>100%</b>	<b>1127</b>	<b>100%</b>	<b>413</b>	<b>100%</b>	<b>8091</b>	<b>100%</b>

# SECTION 2: COMMUNITY OVERVIEW

## 2.1 Admissions and Releases

Community Offender Admissions	Parole	Probation	Total
<b>Beginning Count as of May 1, 2015</b>	<b>3360</b>	<b>10781</b>	<b>14141</b>
New Commitments	2	212	214
Successful Rider	0	167	167
Paroled (New)	178	0	178
Reinstated Parole	39	0	39
From Other Status	0	2	2
<b>Total</b>	<b>219</b>	<b>381</b>	<b>600</b>

Community Offender Releases	Parole	Probation	Total
To Probation or Parole	0	1	1
To Parole Violator	97	0	97
To Retained Jurisdiction (Rider)	0	99	99
To Term Incarceration	0	42	42
Discharged	44	229	273
<b>Total</b>	<b>141</b>	<b>371</b>	<b>512</b>

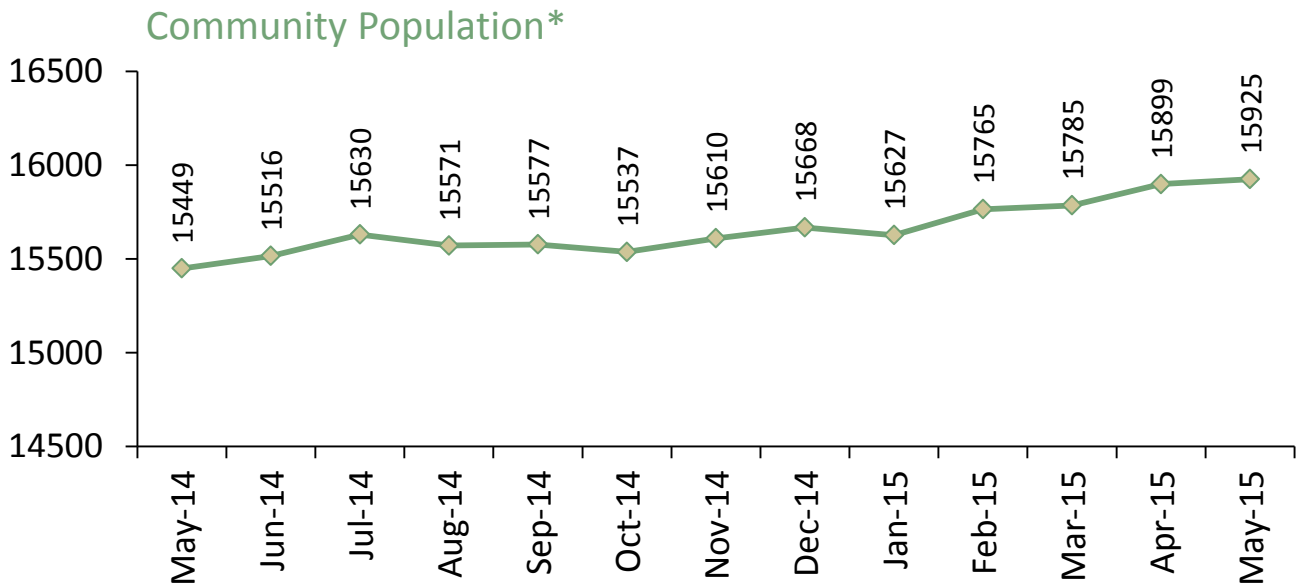
Net Admissions/Releases	Parole	Probation	Total
<b>Net Admissions/Releases</b>	<b>78</b>	<b>10</b>	<b>88</b>
Gross Ending District Count	3438	10791	14229
Offenders in Transition*	-46	-24	-70
<b>Net Ending District Count</b>	<b>3392</b>	<b>10767</b>	<b>14159</b>
Interstate Compact **	528	1238	1766
<b>Net Ending Count as of June 1, 2015 (including Interstate Compact)</b>	<b>3920</b>	<b>12005</b>	<b>15925</b>

\*Offenders in Transition is an inherent "lag time" in offender movement that may take a few days to be reflected in the data offender management system.

\*\*Interstate Compact represents Idaho probationers and parolees who are completing their sentence in another state, but are monitored by Idaho.



## 2.2 Monthly Population Change



## 2.3 Distribution by Crime Group

Crime Group	Probation	% Probation	Parole	% Parole	Total	% Total
Murder/ Man	34	0.3%	114	2.9%	148	0.9%
Sex	622	5.2%	573	14.6%	1195	7.5%
Assault	1802	15.0%	751	19.2%	2553	16.0%
Property	3103	25.8%	917	23.4%	4020	25.2%
Alcohol	4234	35.3%	1111	28.3%	5345	33.6%
Drug	2075	17.3%	448	11.4%	2523	15.8%
Pending**	135	1.1%	6	0.2%	141	0.9%
<b>Total</b>	<b>12005</b>	<b>100%</b>	<b>3920</b>	<b>100%</b>	<b>15925</b>	<b>100%</b>
Percentage	75.4%		24.6%		100%	

\*Monthly Community Population Change reflects the ending caseload including Interstate Compact offenders.

\*\*Pending Count reflects the community offenders that have not yet been adjudicated or the data has not yet been updated in the data management system.

## 2.4 Distribution by District and Legal Status

District/Legal Status	Probation	% Probation	Parole	% Parole	Total	% Total
<b>District 0:</b> Limited Supervision Unit	625	5.2%	194	4.9%	819	5.1%
<b>District 1:</b> Coeur d'Alene	1687	14.1%	243	6.2%	1930	12.1%
<b>District 2:</b> Lewiston	550	4.6%	90	2.3%	640	4.0%
<b>District 3:</b> Caldwell	2139	17.8%	600	15.3%	2739	17.2%
<b>District 4:</b> Boise	2555	21.3%	1358	34.6%	3913	24.6%
<b>District 5:</b> Twin Falls	1346	11.2%	419	10.7%	1765	11.1%
<b>District 6:</b> Pocatello	729	6.1%	155	4.0%	884	5.6%
<b>District 7:</b> Idaho Falls	1136	9.5%	333	8.5%	1469	9.2%
+ Interstate Compact	1238	10.3%	528	13.5%	1766	11.1%
<b>Total</b>	<b>12005</b>	<b>100%</b>	<b>3920</b>	<b>100%</b>	<b>15925</b>	<b>100%</b>

## 2.5 Distribution by Demographics

Age Distribution	Probation	% Probation	Parole	% Parole	Total	% Total
Under 18	2	0.0%	0	0.0%	2	0.0%
Ages 18-24	1982	16.5%	137	3.5%	2119	13.3%
Ages 25-34	4314	35.9%	1280	32.7%	5594	35.1%
Ages 35-44	2871	23.9%	1105	28.2%	3976	25.0%
Ages 45-54	1844	15.4%	887	22.6%	2731	17.1%
Ages 55-64	819	6.8%	405	10.3%	1224	7.7%
Ages 65+	173	1.4%	106	2.7%	279	1.8%
<b>Total</b>	<b>12005</b>	<b>100%</b>	<b>3920</b>	<b>100%</b>	<b>15925</b>	<b>100%</b>

Ethnicity Distribution	Probation	% Probation	Parole	% Parole	Total	% Total
Asian	73	0.6%	39	1.0%	112	0.7%
Black	209	1.7%	128	3.3%	337	2.1%
Hispanic	1277	10.6%	486	12.4%	1763	11.1%
Indian	289	2.4%	96	2.4%	385	2.4%
Other	86	0.7%	28	0.7%	114	0.7%
Unknown	1156	9.6%	61	1.6%	1217	7.6%
White	8915	74.3%	3082	78.6%	11997	75.3%
<b>Total</b>	<b>12005</b>	<b>100%</b>	<b>3920</b>	<b>100%</b>	<b>15925</b>	<b>100%</b>

Gender Distribution	Probation	% Probation	Parole	% Parole	Total	% Total
Females	3324	27.7%	617	15.7%	3941	24.7%
Males	8681	72.3%	3303	84.3%	11984	75.3%
<b>Total</b>	<b>12005</b>	<b>100%</b>	<b>3920</b>	<b>100%</b>	<b>15925</b>	<b>100%</b>

# SECTION 3: TERMS AND DEFINITIONS

## 3.1 Glossary

1. **Admission:** An offender who has been committed by the courts to the Idaho Department of Correction. The offender may enter the department's jurisdiction in Probation, Rider, or Term Status. A subsequent change from Probation or Rider to Term is also typically referred to as an admission to Term.
2. **Civil Commitment:** A form of confinement for offenders who are mentally ill, incompetent, alcohol or drug addicted, as contrasted with the criminal commitment for their sentence. Since they represent a per diem obligation to the Idaho Department of Correction, they are grouped with Term offenders.
3. **Discharged Offender:** Offenders whose court commitment is satisfied or who die while under the jurisdiction of the Idaho Department of Correction. Offenders may be discharged from Parole, Probation, Rider, Term or Parole Violator status.
4. **Incarcerated:** Offenders whose court commitment is satisfied or who die while under the jurisdiction of the Idaho Department of Correction. Offenders may be discharged from Parole, Probation, Rider, Term or Parole Violator status.
5. **New Commitment:** An offender who has been committed by the courts to the Idaho Department of Correction for the first time or after satisfying a previous court commitment has been committed for a new crime. They may enter a Probation, Rider, or Term status.
6. **Non-Idaho Offender:** An offender who is sentenced by a jurisdiction other than Idaho, but is housed by the Idaho Department of Correction for security reasons. Since they represent a per diem obligation to the Idaho Department of Correction, they are grouped with Term offenders.
7. **Parole Violator:** An offender who has been placed on parole and then violates the conditions of their parole. Parole Violator status is usually temporary status until a hearing can be conducted to determine if the offender will be returned to Term or Parole status.

8. **Paroled Offender:** An offender that the parole commission has decided to place in society after serving a portion of their sentence. They are supervised by a Parole Officer for the remainder of their court commitment. The offender's status is changed from Term to Parole.
9. **Probation:** An offender that the courts have decided to allow to service their sentence while living in society. They are not incarcerated, but are supervised by a Probation Officer until their court commitment is satisfied.
10. **Reinstated Parole:** An offender who violated their parole and the Parole Commission subsequently decided to reinstate them in Parole status instead of returning them to prison.
11. **Revoked Parole:** An offender who, while on parole, violates the conditions of their parole and is placed back in prison by the Parole Commission. Their status changes back to Term.
12. **Revoked Probation:** An offender who, while serving probation, violates the conditions of their probation and the court changes their sentence to incarceration. The offender's status changes from Probation to Term, or sometimes Rider.
13. **Retained Jurisdiction/Rider Incarcerated (Rider):** An offender committed to an Idaho Department of Correction Rider program. The courts will retain jurisdiction of this offender until the completion of the Rider program. The courts will subsequently determine whether to place this offender on Probation or Term status or to withhold judgment.
14. **Term:** An offender who the courts or the Parole Commission has committed to one of the state prisons.

## Questions?

Vicky Calderón, Principal Research Analyst

Idaho Department of Correction

Evaluation and Compliance: Research and Analysis

P: 208.658.2147 E: [mcaldero@idoc.idaho.gov](mailto:mcaldero@idoc.idaho.gov)

